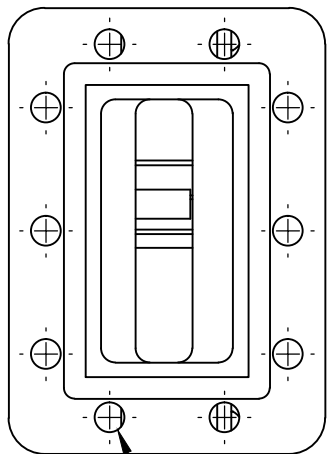
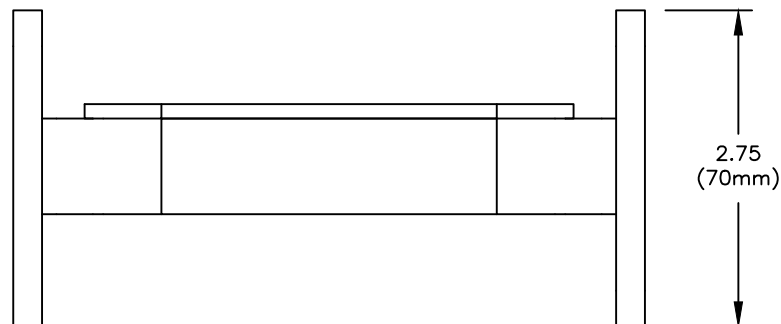
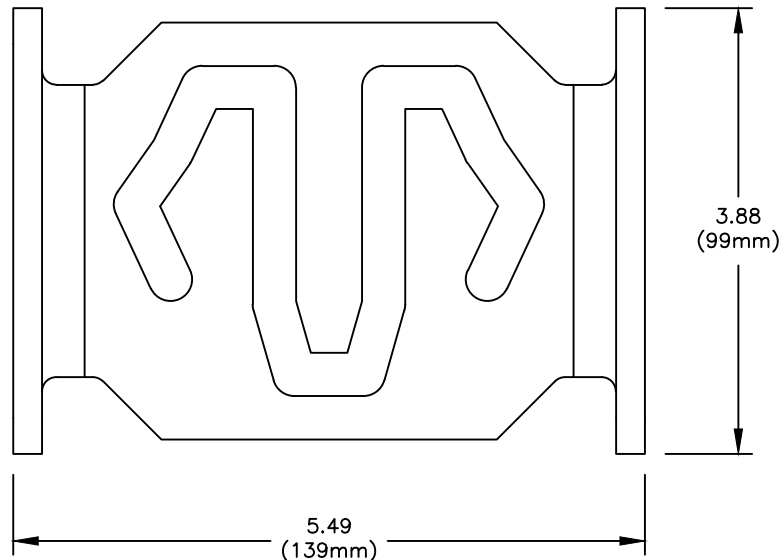


THIS DRAWING IS A SOURCE CONTROL DRAWING AND IS PROPRIETARY TO MICROWAVE FILTER CO., INC. AND MAY NOT BE DUPLICATED OR DISTRIBUTED WITHOUT WRITTEN PERMISSION OF MICROWAVE FILTER CO., INC. THIS DRAWING ALSO DESCRIBES TRADE SECRETS AND IS THE EXCLUSIVE PROPERTY OF MICROWAVE FILTER CO., INC

REVISION			
LTR	ECN	DATE	APPR'D



.257 DIA THRU
(10) BOTH FLANGES



SPECIFICATIONS

PASSBAND: 3700-4200 MHz
 INSERTION LOSS: 1.4 dB TYP.
 RETURN LOSS: 17 dB TYP.
 GROUP DELAY VARIATION:
 WITHIN ±0.5 MHz 3.0 nsec APROX
 REJECTION: 60 dB MIN @ 3682 MHz and BELOW
 30 dB MIN @ 4230 MHz
 OPERATING TEMPERATURE: -40°C TO +60°C
 FLANGES: CPR-229G (INPUT) CPR-229F (OUTPUT)
 ENVIRONMENT: IP67 OUTDOOR USE
 WEIGHT: 1.4 LBS (635 GRAMS)
 FINISH: UV RESISTANT EPOXY

UNLESS SPECIFIED
ALL TOLERANCES ±.030

ENVELOPE DRAWING

MFC MICROWAVE FILTER CO. INC. 6743 KINNE ST. E. SYRACUSE, N.Y. 13057	FSCM27834	
	DATE 6/25	TITLE
DWN BY PMB	C-BAND FILTER	
ENGINEER J.S.	DRAWING NO. 21000F-3700/4200	REV -