

DESCRIPTION:

PMI MODEL P1T-DC40G-65-T-292FF-1NS-HERM IS AN ABSORPTIVE, SINGLE POLE, SINGLE THROW PIN DIODE SWITCH THAT OPERATES FROM DC TO 40 GHz. THIS MODEL INCORPORATES A TTL COMPATIBLE DRIVER FOR EASY SYSTEM INTEGRATION.

SPECIFICATIONS:

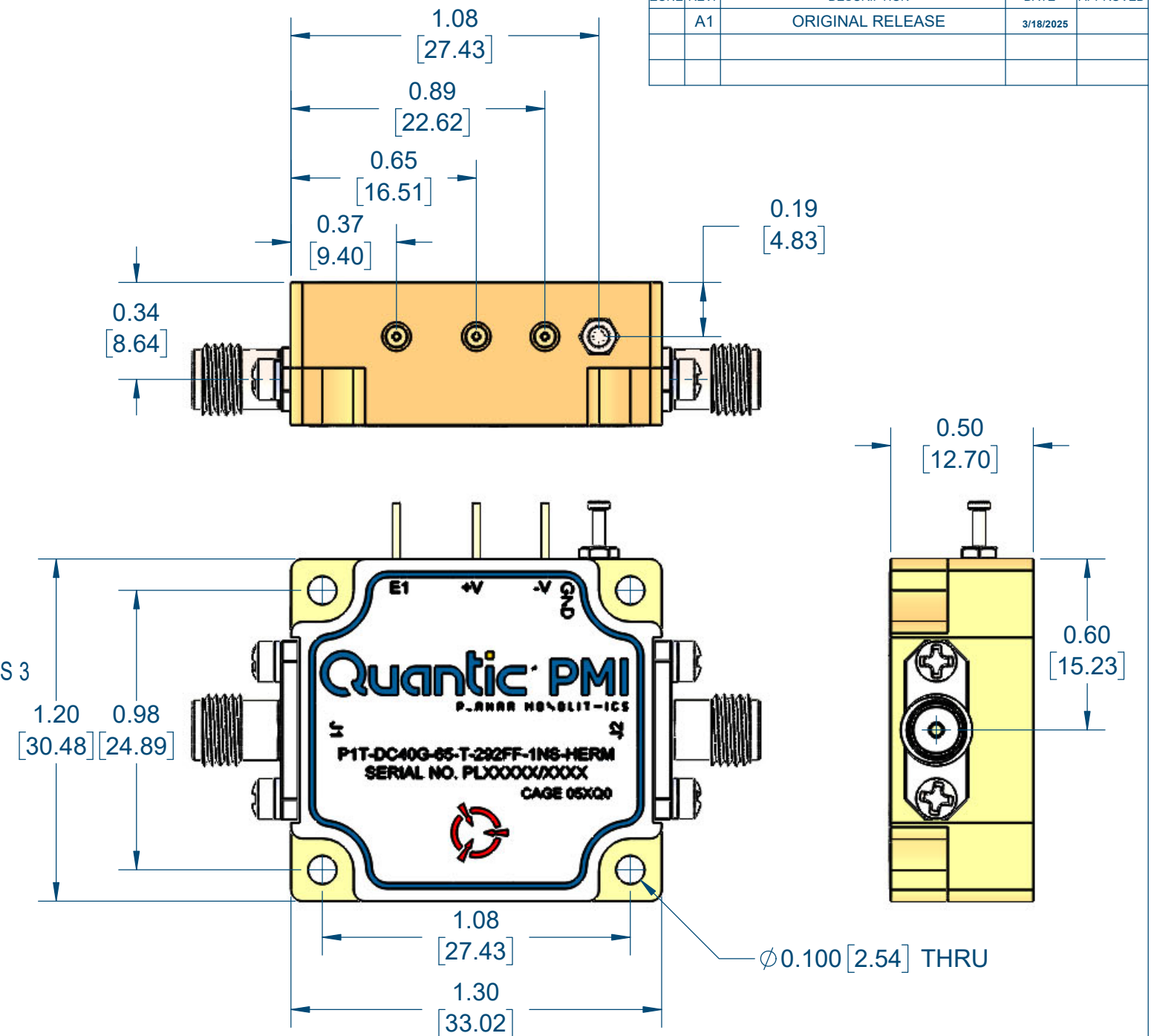
- FREQUENCY RANGE:.....DC TO 40 GHz
- ISOLATION:..... 65 dB TYP, 55 dB MIN
- INSERTION LOSS:..... 5.5 dB TYP, 6.8 dB MAX
- VSWR (ON/OFF):..... 2.0:1 TYP, 2.2:1 MAX
- INPUT POWER:..... +17 dBm CW MAX
- SWITCHING SPEED:..... 5 ns TYP, 6 ns MAX
- RISE/FALL TIME:.....0.9 ns TYP, 1 ns MAX
- POWER SUPPLY :..... +8 TO +15 V @ 15 mA MAX
-8 TO -15 V @ 40 mA MAX
- CONTROL:.....TTL "1" = ON
- CONNECTORS:.....2.92mm FEMALE CONNECTORS
- SIZE:.....1.2" X 1.3" X 0.50"
- SEALING:.....HERMETICALLY SEALED
- FINISH:.....GOLD PLATED HOUSING
TOP AND BOTTOM COVERS CHEMICALLY COATED IAW MIL-DTL-5541, TYPE II, CLASS 3

ENVIRONMENTAL RATINGS:

- TEMPERATURE:.....-50°C TO +50°C (OPERATING)
-60°C TO +60°C (STORAGE)
- HUMIDITY.....THE TEMPERATURE IN THE EXPERIMENTAL CHAMBER WAS 30 DEGREE CELSIUS AND THE RELATIVE HUMIDITY WAS 95%. THE PERFORMACE OF THE DEVICE WAS RESTORED TO STANDARD ATMOSPHERIC CONDITIONS, AND THE DATA WAS MEASURED AND COMPARED AT ROOM TEMPERATURE
- VIBRATION:.....AFTER BEING TRANSPORTED BY ROAD, RAILWAY, WATER AND AIR, THE EQUIPMENT CAN WORK NORMALLY
- PRESSURE:.....THE DEVICE WORKS NORMALLY WITHIN THE ALTITUDE RANGE OF 0 TO 4500 M
- SALT SPRAY:.....THE CONCENTRATON OF SALT SOLUTION SHALL BE 5%-1%, AND THE EXPERIMENTAL TEMPERATURE SHALL BE 35°C+-2%. TWO STATES OF SALT SPRAY SPRAYING AND DRYING FOR 24 HOURS SHALL BE USED ALTERNATELY. THEN, THE SPECIMEN SHALL BE GENTLY WASHED WITH RUNNING WATER UNDER STANDARD ATMOSPHERIC CONDITIONS, AND THE EXPERIMENTAL RESULTS SHALL BE RECORDED AND COMPARED WITH THE DATA BEFORE
- MOLD TEST:.....THE EQUIPMENT SHOULD WORK WELL IN TROPICAL CLIMATES IN THE PRESENCE OF MOLD GROWTH

NOTE: SPECIFICATIONS WILL VARY OVER TEMPERATURE
NOTE: THE ABOVE SPECIFICATIONS ARE SUBJECT TO CHANGE OR REVISION

ZONE	REV.	DESCRIPTION	DATE	APPROVED
	A1	ORIGINAL RELEASE	3/18/2025	



PMI CONFIDENTIAL AND PROPRIETARY

APPROVALS DRAWN M.LAULIS REDRAWN ISSUED		DATE		Quantic PMI PLANAR MONOLITHICS 7309-A GROVE ROAD FREDERICK MARYLAND 21704 USA TEL: (301) 662-5019, FAX: (301) 662-1731 WEB: WWW.QUANTICPMI.COM, EMAIL: SALES@QUANTICPMI.COM ISO 9001 CERTIFIED	
		3/18/2025			
TITLE				OUTLINE	
P1T-DC40G-65-T-292FF-1NS-HERM				P1T-DC40G-65-T-292FF-1NS-HERM	
SIZE	FSCM NO.	DWG NO.	REV.		
B	05XQ0	27051220	A1		
SCALE 2:1			SHEET 1 OF 1		

UNLESS OTHERWISE SPECIFIED
DIMENSIONS ARE IN INCHES
TOLERANCES ARE:
FRACTIONS DECIMALS ANGLES
± .XX ± 0.02 ±
± .XXX ± 0.01