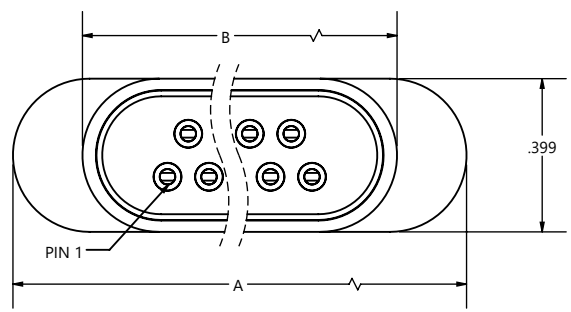
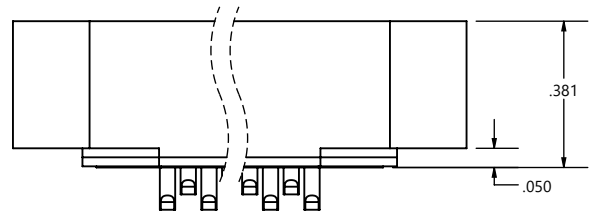
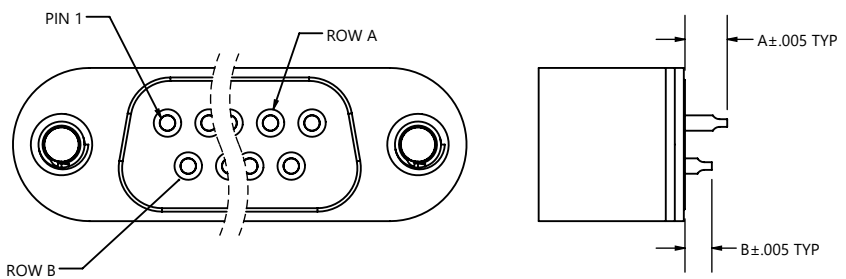
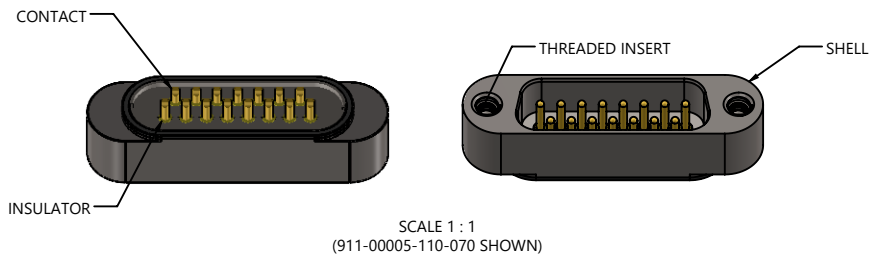
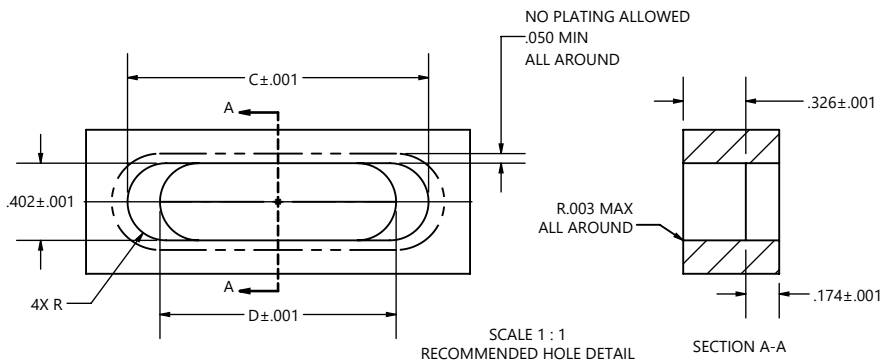
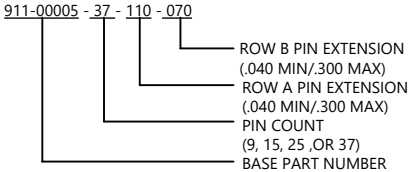




- NOTES:
- HOLES AND INTERFACE DIMENSIONS PER MIL-DTL-24308/4.
  - MATEABLE WITH CONNECTORS MANUFACTURED PER MIL-DTL-24308/1 AND MIL-DTL-24308/2.
  - DESIGNED TO BE LASER WELDED TO A 6061 ALUMINUM HOUSING.
  - WIRE BOND FLATS SHALL BE .020 MIN. LONG, .040 MIN. WIDE AND .020 MIN. THICK.
  - HERMETIC LEAK RATE: LESS THAN OR EQUAL TO  $1 \times 10^{-9}$  CC/SEC HE AT 1 ATM DIFFERENTIAL PRESSURE.
  - ELECTRICAL REQUIREMENTS:
    - INSULATION RESISTANCE: GREATER THAN 5,000 MEGOHMS AT  $500 \pm 10\%$  VDC AT  $25^\circ\text{C}$  WHEN TESTED IAW EIA-364-21.
    - DIELECTRIC WITHSTANDING VOLTAGE: MUST SHOW NO EVIDENCE OF BREAKDOWN OR FLASHOVER WHEN SUBJECTED TO 750 VAC RMS 60 HZ IAW EIA-364-20, DURATION OF APPLICATION TO BE 1 SEC MIN.
  - CURRENT RATING: 7.5 AMPS MAX PER CONTACT.
  - MATERIALS:
    - WELD FLANGE: 4XXX-SERIES ALUMINUM.
    - CONTACTS: BERYLLIUM-COPPER.
    - INSULATORS: KRYOFLEX PROPRIETARY POLYCRYSTALLINE CERAMIC.
    - THREADED INSERTS: STAINLESS STEEL.
  - FINISH:
    - CONTACTS: ELECTROLYTIC NICKEL PLATE IAW QQ-N-290, .000100/.000250 THICK.
    - GOLD PLATE IAW ASTM B488, TYPE III, GRADE A, .000100/.000150 THICK.
    - SHELL: CHEMICAL CONVERSION COAT IAW MIL-C-5541, CLASS 1A.
  - STORAGE AND OPERATING TEMPERATURE  $-55^\circ\text{C}$  TO  $125^\circ\text{C}$
  - ORDERING INFORMATION:
    - PLEASE SPECIFY ACCORDING TO THE FOLLOWING:
    - 911-00005 - 37 - 110 - 070
    - ROW B PIN EXTENSION (.040 MIN./300 MAX)
    - ROW A PIN EXTENSION (.040 MIN./300 MAX)
    - PIN COUNT (9, 15, 25, OR 37)
    - BASE PART NUMBER

WARNING - THIS DOCUMENT CONTAINS TECHNICAL DATA, EXPORT OF WHICH IS RESTRICTED BY THE EXPORT ADMINISTRATION REGULATIONS (EAR), DISCLOSURE TO FOREIGN PERSONS WITHOUT PRIOR U.S. GOVERNMENT APPROVAL IS PROHIBITED. VIOLATIONS OF THE EXPORT LAWS AND REGULATIONS ARE SUBJECT TO SEVERE CIVIL AND CRIMINAL PENALTIES.



NUMBER OF CONTACTS	A	B	C	D
9	1.237	.875	1.240	.878
15	1.565	1.200	1.568	.1203
25	2.105	1.743	2.108	1.746
37	2.753	2.390	2.756	2.393




[WWW.HERMETICSOLUTIONS.COM](http://WWW.HERMETICSOLUTIONS.COM)


TITLE: CONNECTOR, SUB-D, CUSTOM, WITH PIN FLATS  
 J/C: EAR-600

VERSION: A.0	RELEASE DATE: 09/15/21	CAGE CODE: 64567	SCALE: 2:1	SHEET 1 OF 1	DOCUMENT: 0-911-00005
--------------	------------------------	------------------	------------	--------------	-----------------------

SUBJECT TO CHANGE WITHOUT NOTICE