

NOTES:

- 1. HOLES AND INTERFACE DIMENSIONS PER MIL-DTL-24308.
- 2. MATEABLE WITH CONNECTORS MANUFACTURED PER MIL-DTL-24308.
- 3. DESIGNED TO BE LASER WELDED TO AN ALUMINUM HOUSING.
- 4. HERMETIC LEAK RATE: LESS THAN OR EQUAL TO 1×10^{-9} CC/SEC He AT 1 ATM DIFFERENTIAL PRESSURE.
- 5. ELECTRICAL REQUIREMENTS:

INSULATION RESISTANCE: GREATER THAN 5,000 MEGOHMS AT $500 \pm 10\%$ VDC AT 25°C
WHEN TESTED IAW MIL-STD-1344, METHOD 3003.

DIELECTRIC WITHSTANDING VOLTAGE: MUST SHOW NO EVIDENCE OF BREAKDOWN OR FLASHOVER
WHEN SUBJECTED TO 600 VAC RMS 60Hz IAW MIL-STD-1344, METHOD 3001.
DURATION OF APPLICATION TO BE 1 SEC MIN.

6. MATERIALS:

SHELL: 300 SERIES STAINLESS STEEL.
CONTACTS: BERYLLIUM-COPPER IAW ASTM B196 OR ASTM B197.
INSULATORS: KRYOFLEX PROPRIETARY POLYCRYSTALLINE CERAMIC.
TRANSITION RING: 300 SERIES STAINLESS STEEL / 4XXX ALUMINUM.

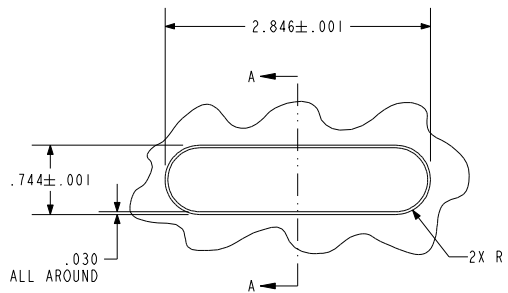
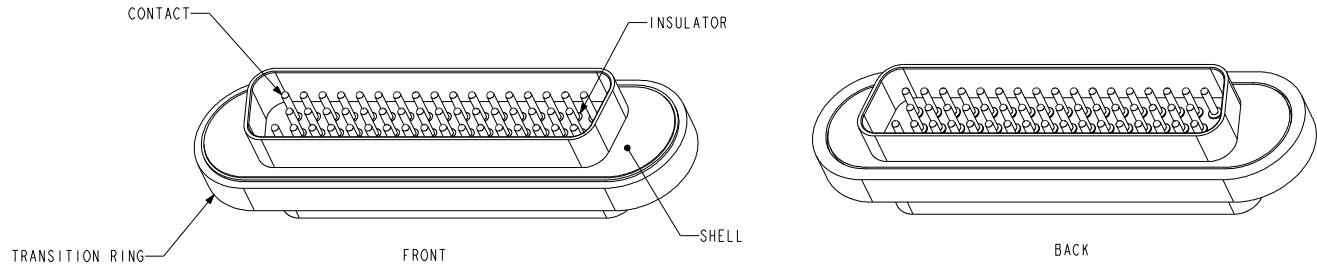
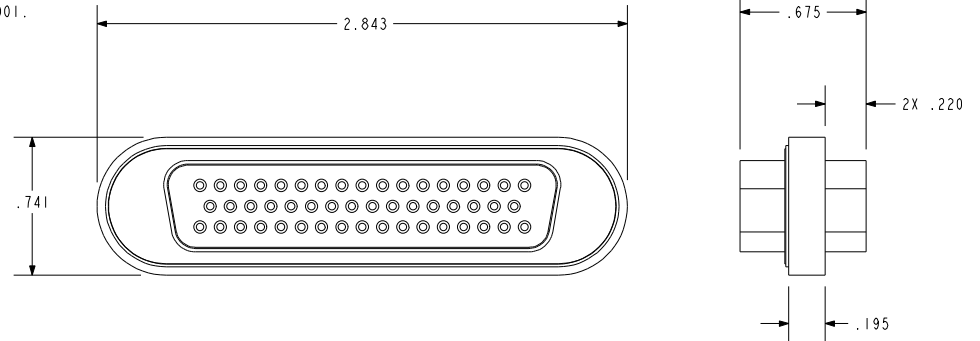
7. FINISH:

CONTACTS: ELECTROLYTIC NICKEL PLATE IAW QQ-N-290, .000100/.000250 THICK.
GOLD PLATE IAW MIL-DTL-45204, TYPE II, GRADE C, .000050/.000150 THICK.

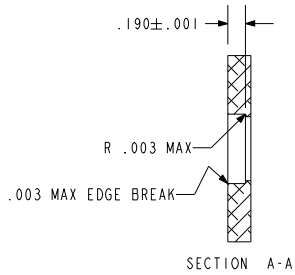
8. ORDERING INFORMATION:

ORDER PART NUMBER: 93685-1

WARNING - THIS DOCUMENT CONTAINS TECHNICAL DATA, EXPORT OF WHICH IS RESTRICTED BY THE EXPORT ADMINISTRATION REGULATIONS (EAR). DISCLOSURE TO FOREIGN PERSONS WITHOUT PRIOR U.S. GOVERNMENT APPROVAL IS PROHIBITED. VIOLATIONS OF THE EXPORT LAWS AND REGULATIONS ARE SUBJECT TO SEVERE CIVIL AND CRIMINAL PENALTIES.



HOLE DETAIL
DETAIL A
SCALE 0.500



PA&E / Pacific Aerospace & Electronics, Inc
434 Olds Station Rd. Wenatchee, Washington 98801
WWW.PACAERO.COM

TITLE: CONNECTOR, SUB-D, DUAL, 50-PIN
THIRD ANGLE PROJECTION
JIC: EAR

VERSION	0.0	RELEASE DATE:	08-02-16	SALES DRAWING	CAGE CODE:	64567	SCALE:	1.000	SHEET:	1 OF 1	DOCUMENT:	0-93685
---------	-----	---------------	----------	---------------	------------	-------	--------	-------	--------	--------	-----------	---------