

NOTES:

1. DESIGNED TO BE LASER WELDED TO AN ALUMINUM HOUSING.
2. HERMETIC LEAK RATE: LESS THAN OR EQUAL TO 1×10^{-9} CC/SEC He AT 1 ATM DIFFERENTIAL PRESSURE.
3. ELECTRICAL REQUIREMENTS:

DIELECTRIC WITHSTANDING VOLTAGE: THERE SHALL BE NO EVIDENCE OF BREAKDOWN, FLASHOVER OR DETERIORATION WHEN SUBJECTED TO 250 VOLTS DC.

INSULATION RESISTANCE: SHALL BE $\geq 100,000$ MEGOHMS AT 100 VDC.

4. MATERIALS:

SHELL: EXPLOSION BONDED STAINLESS STEEL TO 4XXX-SERIES ALUMINUM.
 CONTACT: BERYLLIUM-COPPER.
 INSULATOR: KRYOFLEX 313 PROPRIETARY POLYCRYSTALLINE CERAMIC.

5. FINISH:

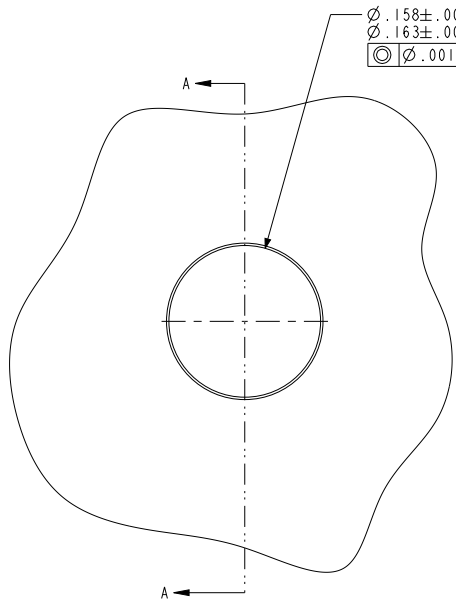
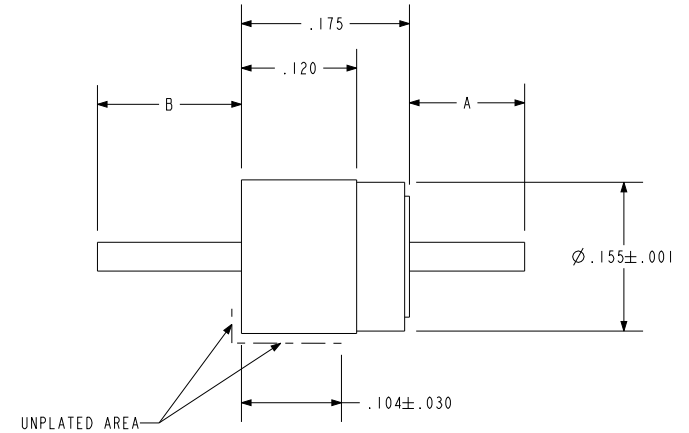
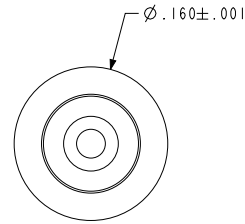
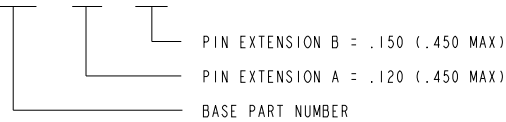
PIN, FERRULE, AND SHELL: ELECTROLYTIC NICKEL PLATE IAW QQ-N-290, .000100/.000250 THICK.
 GOLD PLATE IAW ASTM B 488, TYPE I, CODE A, .000075/.000250 THICK.

SHELL: UNPLATED IN AREA SHOWN TO ALLOW LASER WELD.

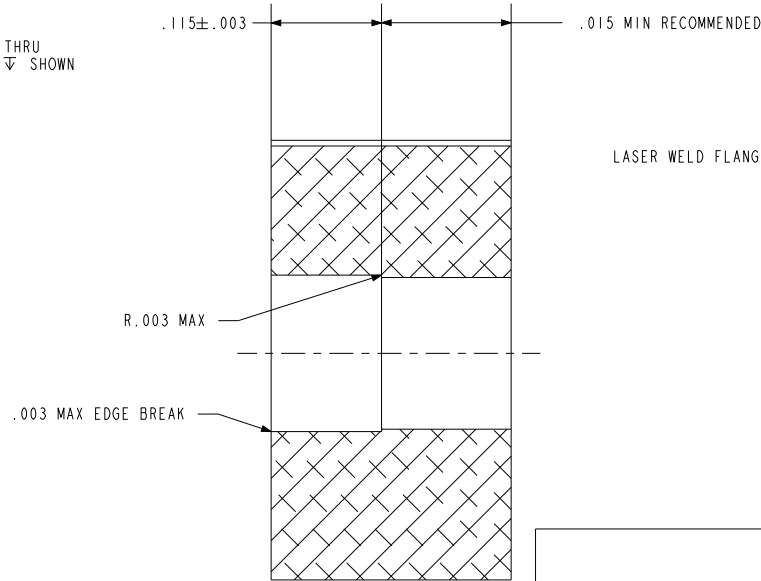
6. ORDERING INFORMATION:

PLEASE SPECIFY ACCORDING TO THE FOLLOWING

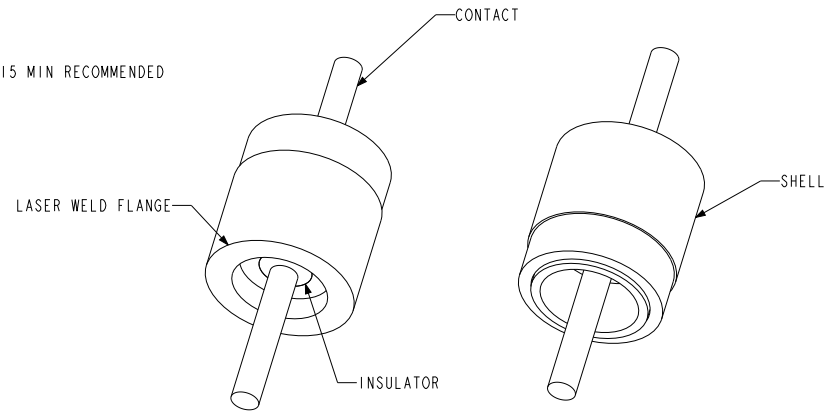
EXAMPLE: 94268 - 120 - 150



HOLE DETAIL



SECTION A-A



HERMETIC SOLUTIONS GROUP
Enabling Technology

TITLE: FEEDTHROUGH, DC, SINGLE PIN, .030 PIN, AL-COMPATIBLE

THIRD ANGLE PROJECTION



CAGE CODE: 64567

VERSION: -.0

RELEASE DATE: 01-29-08

SALES DRAWING

SHEET: 1 OF 1

DOCUMENT: 0-94268