

F  
E  
D  
C  
B  
A

- NOTES:
- DESIGNED TO BE LASER WELDED TO A TITANIUM HOUSING.
  - HERMETIC LEAK RATE:  $\leq 1 \times 10^{-9}$ CC/SEC HE AT 1 ATM DIFFERENTIAL PRESSURE.
  - ELECTRICAL REQUIREMENTS:

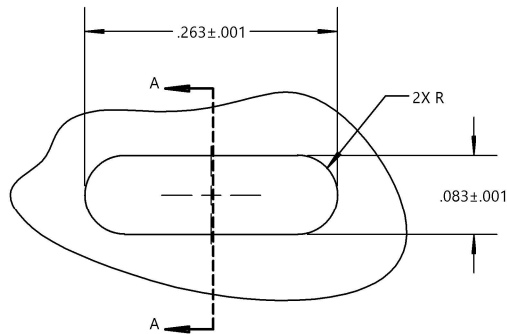
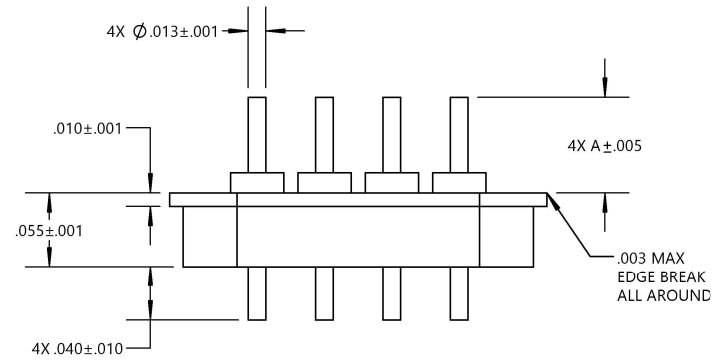
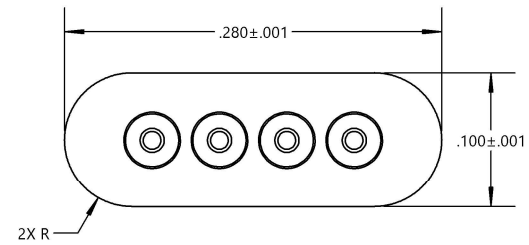
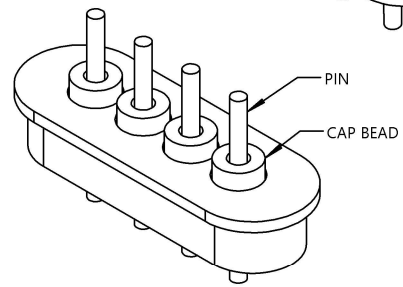
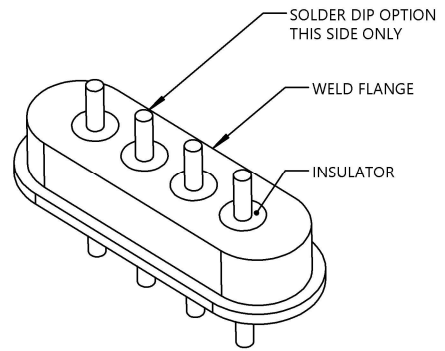
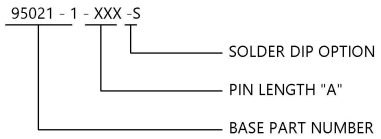
WARNING - THIS DOCUMENT CONTAINS TECHNICAL DATA, EXPORT OF WHICH IS RESTRICTED BY THE EXPORT ADMINISTRATION REGULATIONS (EAR). DISCLOSURE TO FOREIGN PERSONS WITHOUT PRIOR U.S. GOVERNMENT APPROVAL IS PROHIBITED. VIOLATIONS OF THE EXPORT LAWS AND REGULATIONS ARE SUBJECT TO SEVERE CIVIL AND CRIMINAL PENALTIES.

INSULATION RESISTANCE - MUST BE GREATER THAN 5,000 MEGOHMS AT 500 +/- 10% VDC AT 25C IAW EIA-364-21.

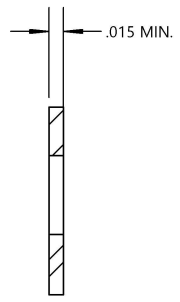
DIELECTRIC WITHSTANDING VOLTAGE - MUST SHOW NO EVIDENCE OF BREAKDOWN OR FLASHOVER WHEN SUBJECTED TO 500 VAC RMS 60 Hz PER EIA-364-20. DURATION OF APPLICATION SHALL BE 1 SECOND MINIMUM.

4. MATERIALS:
- WELD FLANGE: TITANIUM GRADE 23 6ALV4-ELI
  - CONTACTS: 80%PT/20%IR
  - INSULATOR: KRYOFLEX PROPRIETARY POLYCRYSTALLINE CERAMIC.
  - CAP BEAD: ALUMINA
  - SOLDER: SN63/PB37

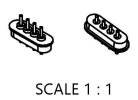
5. ORDERING INFORMATION;
- PLEASE SPECIFY ACCORDING TO THE FOLLOWING:



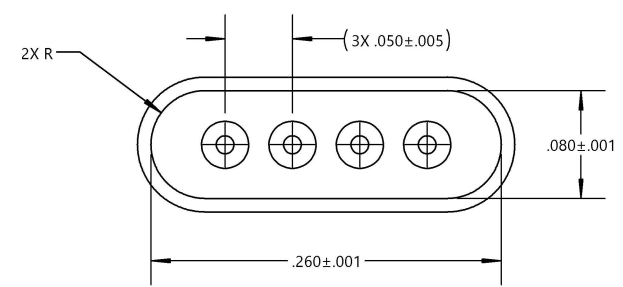
SUGGESTED HOLE DETAIL




SECTION A-A SCALE 5 : 1




SCALE 1 : 1





**PA&E**  
A Qnnect Company

WWW.QNNECTNOW.COM



TITLE: FEEDTHRU, IMPLANTABLE, INLINE (4 PIN)

VERSION: C	RELEASE DATE: 09/29/23	<b>SALES DRAWING</b>	CAGE CODE: 64567	SCALE: 7:1	SHEET 1 OF 1	DOCUMENT: <b>0-95021</b>
---------------	---------------------------	----------------------	---------------------	---------------	-----------------	-----------------------------

F  
E  
D  
C  
B  
A