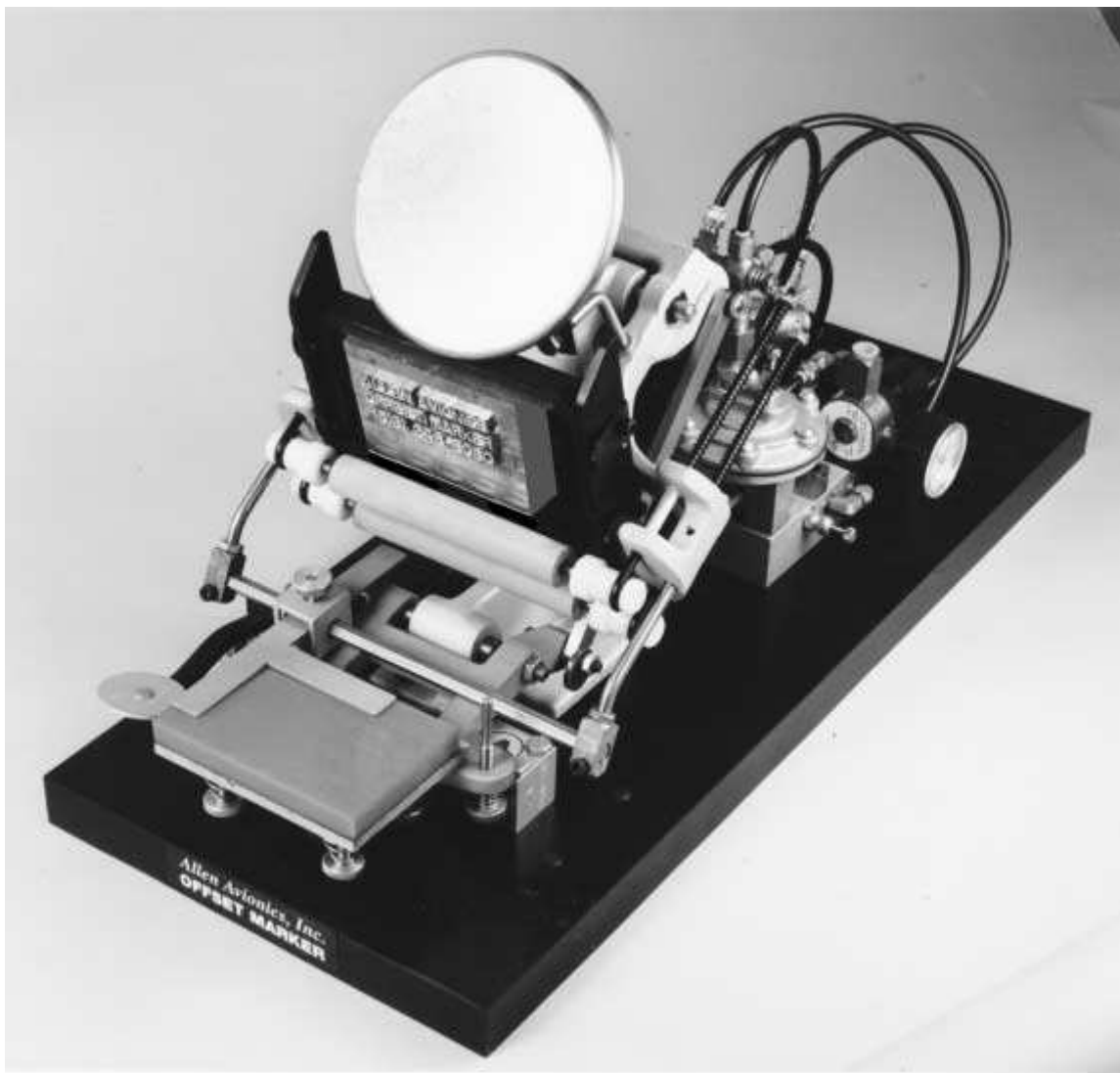


***ALLEN AVIONICS***

# **OFFSET MARKER**

**Parts and Price List**

April 2019



For more Information contact Allen Avionics at 708-453-3238

## OFFSET MARKER PRICE LIST

MODEL  
NUMBER

|             |  |                  |
|-------------|--|------------------|
| <b>M1HD</b> | Hand Operated - (cannot be converted to air operation) ..... | <b>\$1250.00</b> |
| <b>A2HD</b> | Air Operated. Hand Valve Controlled.....                     | <b>2100.00</b>   |
| <b>A3FT</b> | Air Operated. Foot Valve Controlled .....                    | <b>2200.00</b>   |
| <b>A4AC</b> | Air Operated. Automatic Cycling .....                        | <b>2200.00</b>   |
| <b>A5AH</b> | Air Operated. Automatic Cycling & Hand Control . .....       | <b>2250.00</b>   |
| <b>A6AF</b> | Air Operated. Automatic Cycling & Foot Control .....         | <b>2250.00</b>   |

ALL THE ABOVE MARKING MACHINES ARE SUPPLIED WITH 1 PAD, 1 LOCK, 1 CHASE , 1 WRENCH AND AN INSTRUCTION MANUAL. INK , CLEANER AND TYPE MUST BE PURCHASED SEPARATELY. SEE MARKING MACHINE ACCESSORIES.

### OFFSET TYPE

| Part No.       | Description                  | Height Of TYPE | Height Of Body ( C ) | Type Specimen  | Font Price                 |
|----------------|------------------------------|----------------|----------------------|--|----------------------------|
| <b>TYP0404</b> | 4 Pt. Condensed on 4 Pt.body | <b>0.045</b>   | <b>0.055</b>         | ABCDEF GHIJKLMNOPQRSTUVWXYZ 1234567890 # % . - , & ( ) / \$ ? ! = ± Ω          | <b>\$360.00</b>            |
| <b>TYP0606</b> | 6 Pt. Condensed on 6 Pt.body | <b>0.061</b>   | <b>0.083</b>         | ABCDEF GHIJKLMNOPQRSTUVWXYZ 1234567890 # % . - , & ( ) / \$ ? ! = ± Ω          | <b>\$300.00</b>            |
| <b>TYP0810</b> | 8 Pt. Normal on 8Pt.body     | <b>0.100</b>   | <b>0.138</b>         | ABCDEF GHIJKLMNOPQRSTUVWXYZ 1234567890 # % . - , & ( ) / \$ ? ! = ± Ω          | <b>\$275.00</b>            |
| <b>TYP1010</b> | 10 Pt. CNormal on 10Pt.body  | <b>0.110</b>   | <b>0.138</b>         | ABCDEF GHIJKLMNOPQRSTUVWXYZ 1234567890 # % . - , & ( ) / \$ ? ! = ± Ω          | <b>\$275.00</b>            |
| <b>TYP1414</b> | 14 Pt. Normal on 14 Pt.body  | <b>0.150</b>   | <b>0.193</b>         | ABCDEF GHIJKLMNOPQRSTUVWXYZ<br>1234567890 # % . - , & ( ) / \$ ? ! = ± Ω       | <b>\$275.00</b>            |
| <b>TYP1818</b> | 18 Pt. Normal on 18 Pt.body  | <b>0.210</b>   | <b>0.248</b>         | ABCDEF GHIJKLMNOPQRSTU<br>V W XYZ 1234567890 # % . - , & ( )<br>/ \$ ? ! = ± Ω | <b>No longer available</b> |
| <b>TYP2424</b> | 24 Pt. Normal on 24 Pt.body  | <b>0.270</b>   | <b>0.331</b>         | ABCDEF GHIJKLMNOPQRS<br>TUVWXYZ1234567890 # % . - ,<br>& ( ) / \$ ? ! = ± Ω    | <b>No longer available</b> |

All of the above fonts consist of an assortment of capital letters, numbers, punctuation and spacers totaling over 670 pieces. All characters are cast in a hard lead alloy. Each font is packaged with the following characters:

3 pieces of ..... / \$ # % ( ) = ± Ω

7 pieces of ..... ? - ! . , &

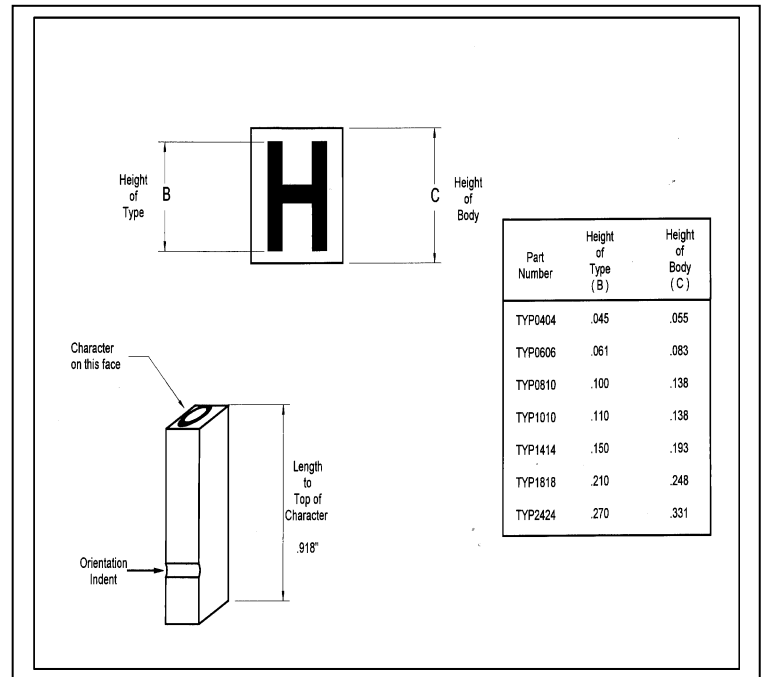
9 pieces of ..... 2 3 4 5 6 7 8 9

- 11 pieces of ..... 1
- 13 pieces of ..... 0
- 6 pieces of ..... Q X Z
- 9 pieces of ..... J K V
- 13 pieces of ..... B W Y
- 15 pieces of ..... F G
- 17 pieces of ..... D H M P U
- 21 pieces of ..... C L
- 32 pieces of ..... A I N O R S T
- 39 pieces of ..... E

Packages of replacement characters for any of the above fonts can be purchased. A package of 10 identical characters of any of the above is 10% of the font price. A package of assorted spacers for any body size is available. See accessories list below.

### Custom Type, Dies, Stamps and Logos

We can produce custom type from brass and steel in many standard type faces to meet your specifications. Custom dies and blocks of type can be manufactured with logos or special characters in any type face from brass and magnesium in 4 point and larger type. Many standard logos and symbols are also available. Use your company's logo to identify your product. These custom logos and type can be made from almost any printed representation, copy or drawing. **Call factory for pricing and availability.**



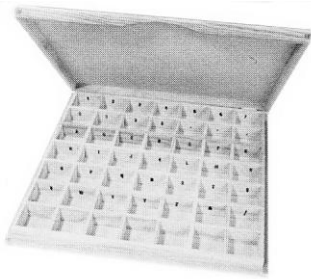
### ACCESSORIES and INKS

|         |                             |       |        |  |        |
|---------|-----------------------------|-------|--------|--|--------|
| MM-SP4  | Package of 4 Pt. Spacers    | 70.00 | MM-RR  | Rubber Roller with bearings.           | 87.00  |
| MM-SP6  | Package of 6 Pt. Spacers    | 65.00 | MM-WR  | Wrench for Chase Lock .                | 7.50   |
| MM-SP10 | Package of 10 Pt. Spacers   | 60.00 | RT012B | Black Ink, 4 Fluid oz. Tube.           | 95.00  |
|         | for TYP0810 and TYP1010     |       | RT012W | White Ink, 4 Fluid oz. Tube.           | 95.00  |
| MM-SP14 | Package of 14 Pt. Spacers   | 60.00 | RT012C | Specify Color. See ink specifications. | 105.00 |
| MM-MC   | METAL Chase                 | 68.00 | HT175B | Black Ink, 4 Fluid oz. Tube.           | 95.00  |
| MM-LK   | Chase Lock                  | 22.00 | HT175W | White Ink, 4 Fluid oz. Tube.           | 95.00  |
| MM-FLF  | Full-Length Metal Furniture | 67.00 | HT175C | Specify Color. See ink specifications. | 105.00 |
| MM-HLF  | Half-Length Metal Furniture | 47.00 | MT260B | Black 2-Part Epoxy Ink, 8 Fluid oz.    | 150.00 |
| MM-OTP  | Offset Transfer Pad         | 57.00 | MT260W | White 2-Part Epoxy Ink. 8 Fluid oz.    | 150.00 |
|         |                             |       | MT260C | Specify Color. See ink specifications. | 200.00 |
|         |                             |       | MM-BR  | Brayer                                 | 35.00  |

**Minimum Order \$50.00. Prices effective April 1, 2019.**

**All prices subject to change without notice.**

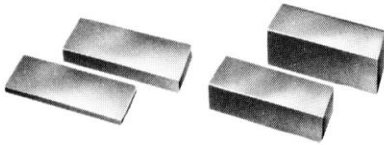
**All products manufactured in U.S.A.**



### CASE FOR TYPE

This conveniently shaped wooden box expedites the selection of the offset type. The time saving alone is worth many times the cost of this inexpensive container. This 12" x 12" x 1 1/4" box is divided into 49 individually marked sections. A cover keeps type dust-free and prevents the type from mixing.

### FURNITURE (Metal)

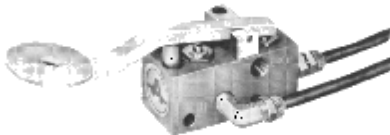


Used as spacers between lines. Available in two different lengths: **Full Length** – Approximately 4.3" long.  
**Half Length** – Approximately 2.1" long.

A set of either of the above consists of:

- 1 pc. 1/2" (.500), 3 pcs. 1/3" (.333), 2 pcs. 1/6" (.167),
- 5 pcs. 55 mils (.055), 3 pcs. 25 mils (.025),
- 7 pcs. 15 mils (.015)

### HAND VALVE KITS



- (H1HD) Used on Model A3FT to add hand valve control. (Hand valve, hose and fittings.)
- (H2HD) Used on Model A4AC to convert to Model A5AH. (Hand valve, hose, fittings, couplers and hardware.)

### FOOT VALVE KITS

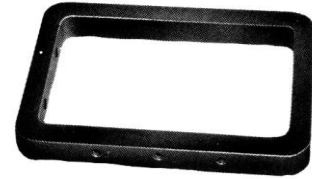


- (H3FT) Used on Model A2HD to add foot valve control. (Foot valve, hose and fittings.)
- (H4FT) Used on Model A4AC to convert to Model A6AF. (Foot valve, hose, fittings and hardware.)

### AUTOMATIC KIT

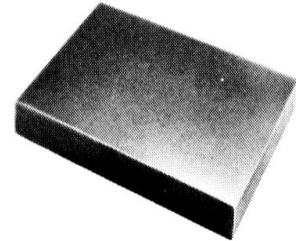
- (H5AC) Used on Model A2HD or A3FT to convert to Model A5AH or A6AF. (2-way air valve, couplers and miscellaneous hardware.)

### CHASE



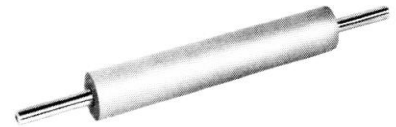
Fixture to hold type.

### OFFSET TRANSFER PAD



4 1/2" x 3" x 1/2" synthetic rubber pad.

### RUBBER ROLLERS



3/4" dia. x 5" long on arbor 1/4" dia. x 7 1/2" long.

### LOCK



Used to secure type and furniture in proper position inside of chase.

### WRENCH



Used to expand lock.

### BRAYER



Hand roller used to spread ink over platen.