

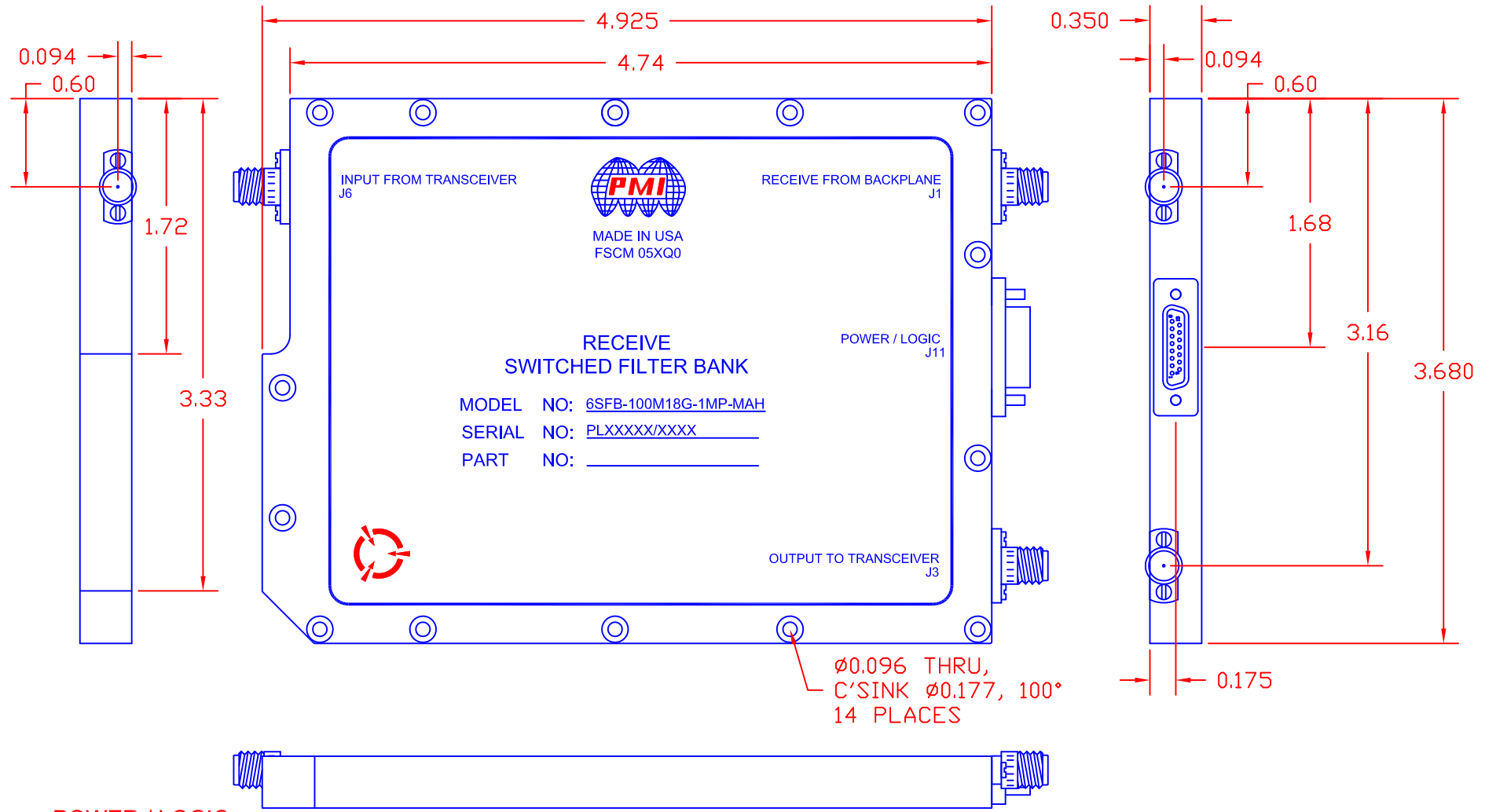
DESCRIPTION:

PMI MODEL NUMBER 6SFB-100M18G-1MP-MAH IS A RECEIVE SWITCHED FILTER BANK COVERING THE FREQUENCY RANGE OF 100 MHz TO 18 GHz. THIS UNIT INCORPORATES A 2-WAY ABSORPTIVE SWITCH TO SELECT AN INPUT ALONG WITH TWO 6-WAY SWITCHES ALLOWING ONE OF SIX FILTER PATHS TO BE CHOSEN. THE SPECIFICATIONS ARE LISTED BELOW.

SPECIFICATIONS:

- FREQUENCY: 100 MHz TO 18.0 GHz
- GAIN: 18 dB TYPICAL (J1 to J3), -10dB TYPICAL (J6 to J3)
- ISOLATION: J1, J6 100 dB TYPICAL
- SWITCHING SPEED: 100 ns TYPICAL
- INPUTS: J1, J6
- J1 INPUT: INPUT FROM BACKPLANE
FREQUENCY: 100 MHz TO 18.0 GHz
POWER LEVEL: -80 dBm TO -10 dBm
- J6 INPUT: INPUT FROM TRANSCEIVER
FREQUENCY: 100 MHz TO 18.0 GHz
POWER LEVEL: -52 dBm TO -22 dBm
- OUTPUTS: J3
- J3 OUTPUT: OUTPUT TO TRANSCEIVER
FREQUENCY: 100 MHz TO 18.0 GHz
POWER LEVEL: -62 dBm TO +8 dBm TYPICAL
- THRU CHANNEL PASSBAND: 100 MHz TO 18 GHz
- CHANNEL 1 CENTER FREQUENCY: 3400 MHz
3 dB BANDWIDTH: 2000 MHz
REJECTION: -40 dBc 100 MHz - 2 GHz TYP, -30 dBc MIN
-40 dBc 4.8 GHz - 18 GHz TYP, -30 dBc MIN
- CHANNEL 2 CENTER FREQUENCY: 5400 MHz
3 dB BANDWIDTH: 2000 MHz
REJECTION: -40 dBc 100 MHz - 4 GHz TYP, -30 dBc MIN
-40 dBc 6.8 GHz - 18 GHz TYP, -30 dBc MIN
- CHANNEL 3 CENTER FREQUENCY: 7400 MHz
3 dB BANDWIDTH: 2000 MHz
REJECTION: -40 dBc 100 MHz - 6 GHz TYP, -30 dBc MIN
-40 dBc 8.8 GHz - 18 GHz TYP, -30 dBc MIN
- CHANNEL 4 CENTER FREQUENCY: 9400 MHz
3 dB BANDWIDTH: 2000 MHz
REJECTION: -40 dBc 100 MHz - 8 GHz TYP, -30 dBc MIN
-40 dBc 10.8 GHz - 18 GHz TYP, -30 dBc MIN
- CHANNEL 5 CENTER FREQUENCY: 11400 MHz
3 dB BANDWIDTH: 2000 MHz
REJECTION: -40 dBc 100 MHz - 10 GHz TYP, -30 dBc MIN
-40 dBc 12.8 GHz - 18 GHz TYP, -30 dBc MIN
- CONTROL LOGIC: 3.3 V TTL
- TTL 5: INPUT SELECT
0 BACKPLANE INPUT
1 TRANSCEIVER INPUT
- TTL 6: FILTER SELECT
000 CHANNEL 1
001 CHANNEL 2
010 CHANNEL 3
011 CHANNEL 4
100 CHANNEL 5
101 THRU CHANNEL
110 NOT DEFINED
111 NOT DEFINED
- POWER SUPPLIES: +12 V, -12 V, +5 V, +3.3 V
- SIZE: 4.925" X 3.68" X 0.35"
- RF CONNECTORS: SMA (F)
- DIGITAL / POWER CONNECTOR: 15 PIN MICRO-D
MATING CONNECTOR PROVIDED
- FINISH: PAINTED GRAY - EPOXY POLIMIDE COATING IAW MIL-C-22750,
TYPE I OVER EPOXY POLIMIDE PRIMER IAW MIL-P-23377, TYPE I, CLASS 1 OR 3.
- OPERATING TEMPERATURE: -40°C TO +85°C

REVISIONS				
ZONE	REV.	DESCRIPTION	DATE	APPROVED
	A1	ORIGINAL RELEASE	3/15/13	
	B1	ECN 14-0091	6/11/14	
	C1	ECN 14-0107	7/18/14	



POWER / LOGIC

ITEM	FUNCTION
1	TTL5
2	TTL6 - LSB
3	TTL6 - BIT2
4	TTL6 - MSB
5	N/C
6	+12 V
7	GND
8	+5 V
9	GND
10	+3.3 V
11	GND
12	-12 V
13	GND
14	N/C
15	N/C

PMI CONFIDENTIAL AND PROPRIETARY

PLANAR MONOLITHICS INDUSTRIES, INC.
 7311-F GROVE ROAD
 FREDERICK, MARYLAND 21704 USA
 TEL: 301-662-5019 FAX: 301-662-1731
 WEBSITE: www.pmi-rf.com
 E-MAIL: sales@pmi-rf.com
 ISO 9001 CERTIFIED



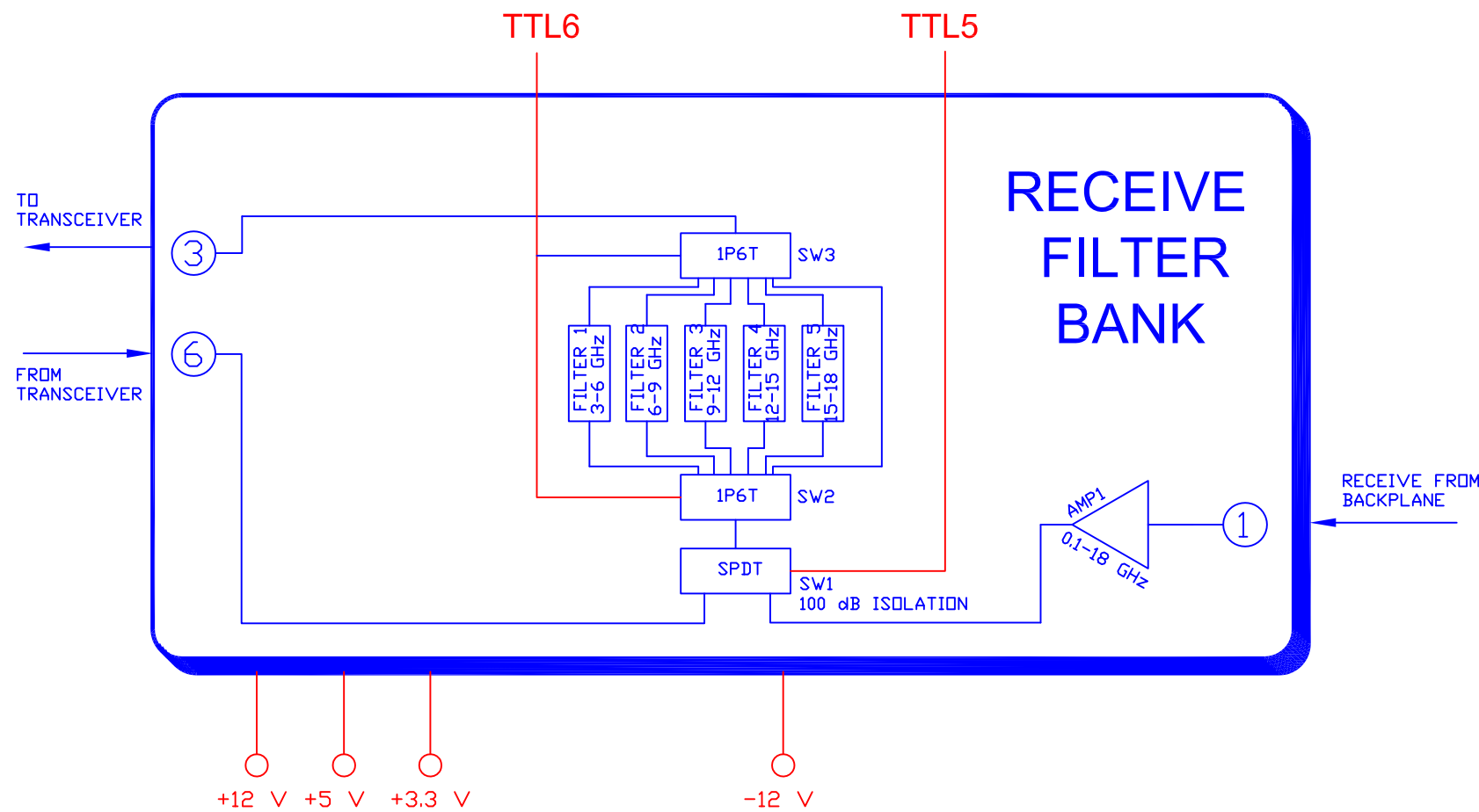
ALL DIMENSIONS ARE IN INCHES
 TOLERANCES:
 X.XX ±0.020
 X.XXX ±0.010

APPROVALS		DATE	TITLE		
DRAWN <i>DPD</i>		3/15/13	PRODUCT FEATURE 6SFB-100M18G-1MP-MAH		
CHECKED			SIZE	FSCM NO.	DWG NO.
ISSUED			B	05XQ0	27017606
			SCALE	N: S	SHEET 1 OF 2
					REV. C1

REVISIONS				
ZONE	REV.	DESCRIPTION	DATE	APPROVED
	A1	ORIGINAL RELEASE	3/15/13	
	B1	ECN 14-0091	6/11/14	
	C1	ECN 14-0107	7/18/14	

POWER / LOGIC

ITEM	FUNCTION
1	TTL5
2	TTL6 - LSB
3	TTL6 - BIT2
4	TTL6 - MSB
5	N/C
6	+12 V
7	GND
8	+5 V
9	GND
10	+3.3 V
11	GND
12	-12 V
13	GND
14	N/C
15	N/C



PMI CONFIDENTIAL AND PROPRIETARY

ALL DIMENSIONS ARE IN INCHES
TOLERANCES:
X.XX ±0.020
X.XXX ±0.010

PLANAR MONOLITHICS INDUSTRIES, INC.

7311-F GROVE ROAD
FREDERICK, MARYLAND 21704 USA
TEL: 301-662-5019 FAX: 301-662-1731
WEBSITE: www.pmi-rf.com
E-MAIL: sales@pmi-rf.com
ISO 9001 CERTIFIED



APPROVALS		DATE	TITLE		
DRAWN	DPD	3/15/13	PRODUCT FEATURE 6SFB-100M18G-1MP-MAH		
CHECKED			SIZE	FSCM NO.	DWG NO.
ISSUED			B	05XQ0	27017606
			SCALE	N: S	SHEET 2 OF 2
					REV. C1