

## Broadband Detector, Model DW-2

### Description:

Spacek Labs Model DW-2 is a full-band, 75-110 GHz detector. This detector is a very cost effective way of measuring power in the W-band spectrum. The RF input is WR-10 (UG387/U Mod) and the output is SMA (F). These detectors can be used as fast data rate receivers, with up to 3 GHz bandwidth at the 3 dB point into a 50 Ohm load. Using a 10 megohm load the sensitivity is 1500 mV/mW at -20 dBm input power. Flatness across the band is  $\pm 2$  dB with a typical tangential sensitivity of -45 dBm in a 1 MHz video bandwidth. Maximum input power is +18 dBm. This detector is available with positive (P) or negative (N) output polarity.

### Features:

- Extremely rugged and compact
- Available in waveguide bandwidths from 18 to 110 GHz
- Our detectors can be made to extend frequency counters (up to 110 GHz)

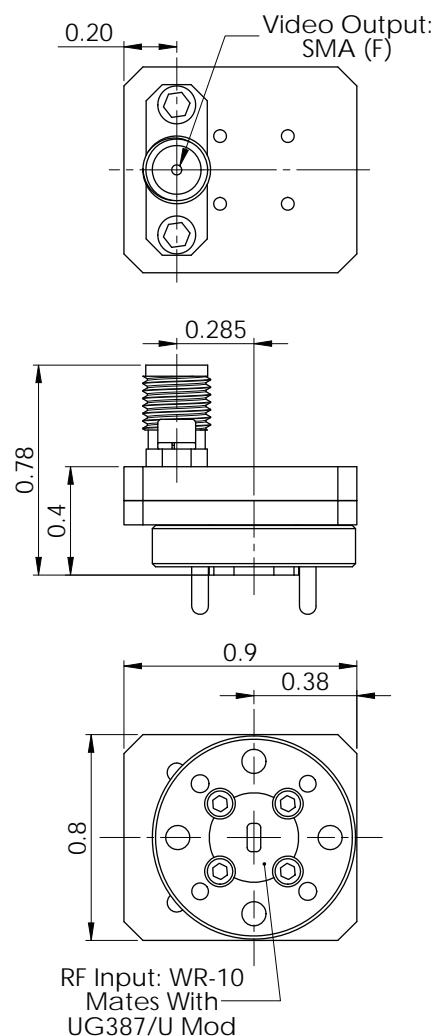
### Electrical Specifications:

Description	Min.	Typ.	Max.
Frequency (GHz)	75 GHz	-	110 GHz
Sensitivity (mV/mW)*	-	1500	-
Flatness (dB)	-	$\pm 2$ dB	-
Max Input Power (dBm)	-	-	18 dBm

\* @ -20 dBm input power

### Mechanical Specifications:

Description	Specification
Connector, Input	WR-10, UG387/U Mod
Connector, Output	SMA (F)
Dimensions OA	See outline
Material	Brass
Finish	Gold
Weight	2.0 oz



**OUTLINE: DIMENSIONS IN INCHES (NOT TO SCALE)**

BROADBAND DETECTORS

**Spacek Labs, Inc.** 212 East Gutierrez Street, Santa Barbara, CA 93101  
www.spaceklabs.com | Phone: 805 564-4404 | Fax: 805 966-3249 | Email: sales@spaceklabs.com

Notes: Product data is periodically updated to reflect product / raw material / process / testing changes. This data should not be used as guaranteed specifications. Please contact Spacek Labs to make sure you have the most current data.