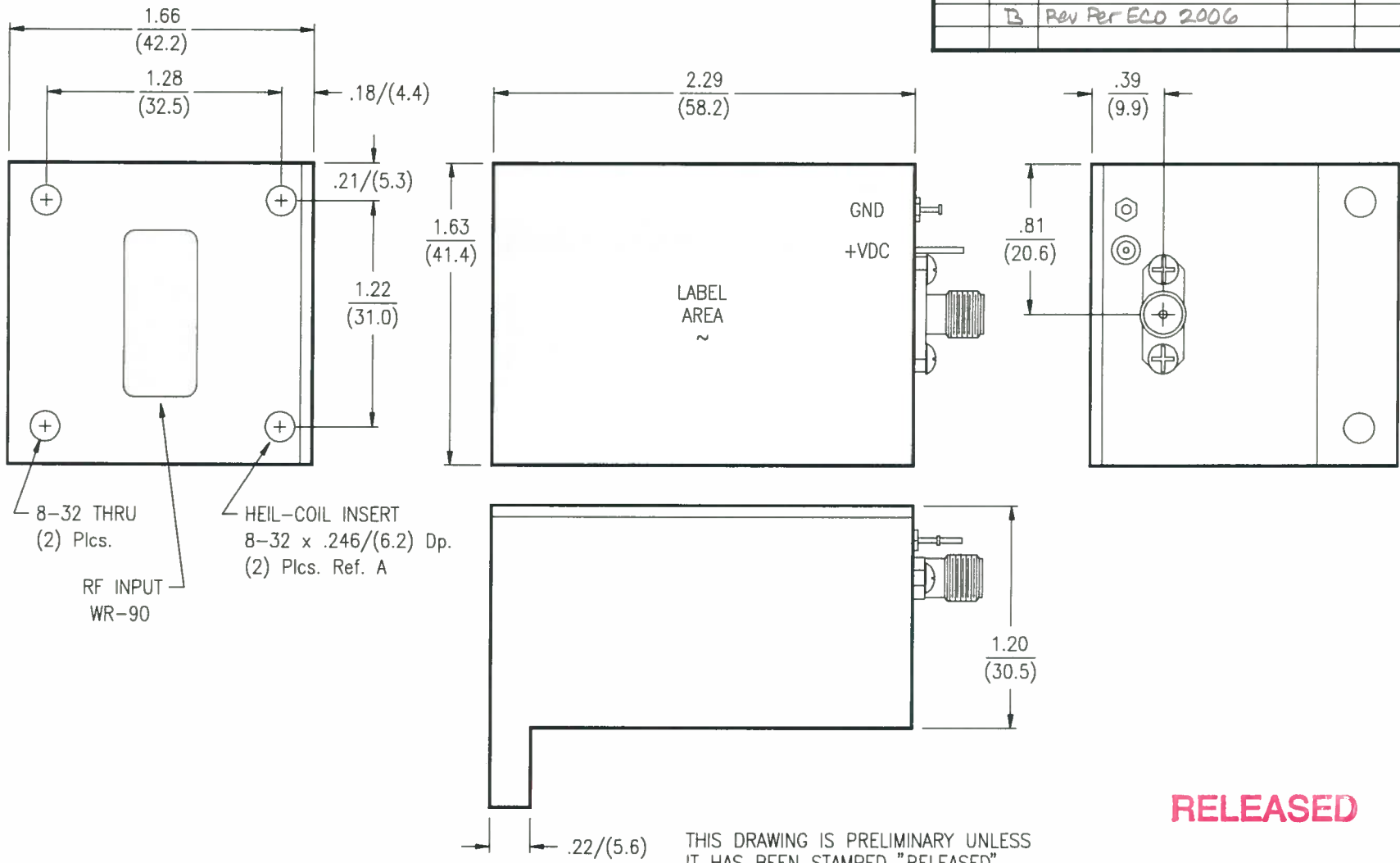


| REVISIONS | | | | |
|-----------|------|------------------|------|----------|
| ZONE | REV. | DESCRIPTION | DATE | APPROVED |
| | B | Rev Per ECO 2006 | | |



RELEASED

THIS DRAWING IS PRELIMINARY UNLESS IT HAS BEEN STAMPED "RELEASED".

- notes:
1. Dimensions are in Inches/(mm.).
 2. RF output connector is SMA female.
 3. Finish Electroless Nickel .0005/.0010 per MIL-C-26074b, all surfaces

| | | | | |
|---|---------------------|--------|---------------------------------|---|
| UNLESS OTHERWISE SPECIFIED DIMENSIONS ARE IN INCHES TOLERANCE ARE: FRACTIONS DECIMALS ANGLES ±1/32 XX±.010 ±1/2 XXX±.005 | CONTRACT NO. --- | | <i>Microwave Solutions Inc.</i> | |
| | APPROVALS | | NATIONAL CITY CALIFORNIA | |
| MATERIAL: --- | DRAWN: A. HALL | DATES | | OUTLINE DRAWING |
| FINISH: --- | CHECK | 970527 | | WR-90, INPUT, SMA FEMALE OUTLET |
| DO NOT SCALE DRAWING | REVISED: M. ROSAS | 990524 | | SIZE A FSCM NO. 65151 DWG. NO. OL-001551 REV. B |
| | OL1551B.DWG | 990524 | | SCALE: 1.25X SHEET: 1 OF 1 |