



## Features and Benefits

16KHz to 80MHz  
+1.8V and above  
High-shock & Vibration  
-100°C to +240°C  
Extended operating life

## Typical Applications

Extreme Temperature such as downhole tools

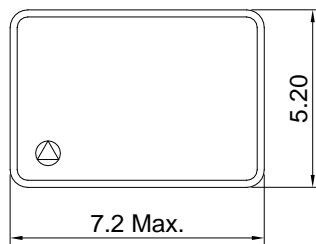
## Description

Special extreme temperature components, assembly processes, and testing methods used to create a family of oscillator products capable of operating reliably @ +300°C

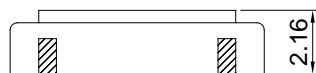
## Mechanical Drawing & Pin Connections

Drawing No:MD150068-1

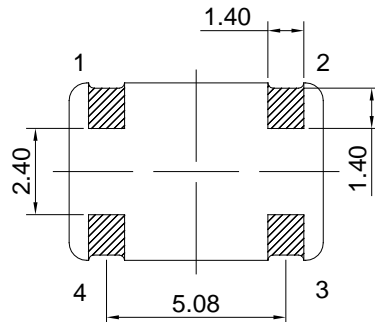
Top View



Side View



Bottom View

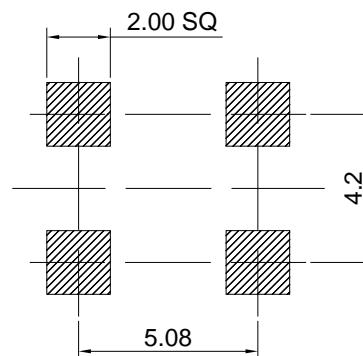


Pin Functions:

	A	B
1	Pad	Function
2	1	No Connect
3	2	Ground (Case)
4	3	Output
5	4	Supply Voltage (Vcc)

Unit : mm

Recommended Land Pattern





## Specifications

ELECTRICAL SPECIFICATIONS	PARAMETER
OUTPUT FREQUENCY	12.288 MHZ
SUPPLY VOLTAGE	+3.3V
OPERATING TEMPERATURE RANGE	0°C to +175°C
FREQUENCY STABILITY OVER TEMPERATURE	±150 ppm max
OUTPUT LOGIC	CMOS; 15 pF Load
SUPPLY CURRENT	1.1 mA max @ 3.3V
OUTPUT SYMMETRY	45/55%