

OCXO2728L

High stability SMD OCXO with Sine wave Output

Features and Benefits

Sine wave output
High stability SMD OCXO
+/-200ppb max from -55°C to +85°C
27.8x27.8x15.5mm SMD package

Description

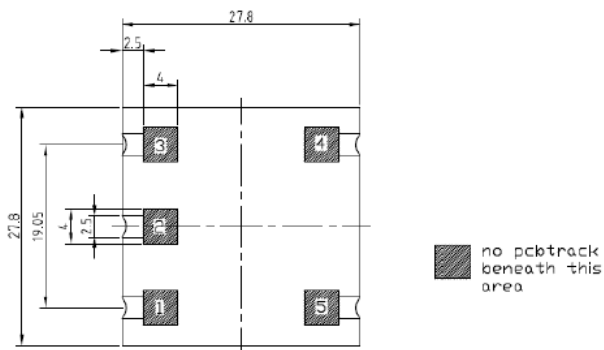
OCXO2728L is High stability with Sine wave Output OCXO

Typical Applications

Ref for Microwave comm.. system
Signal Analyzer Reference for internal synthesizers
SATCOM System

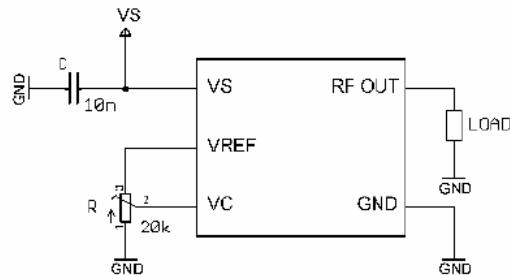
Mechanical Drawing & Pin Connections

Drawing No: MD140067-1



Pin connections

Pin #	Symbol	Function
1	RF OUT	RF Output
2	GND	Ground
3	V _C	Control Voltage (EFC)
4	VREF	Reference voltage
5	V _S	Supply Voltage



OCXO2728L

High stability SMD OCXO with Sine wave Output

Specifications

OCXO Specification		Sym	Condition	Value			Unit	Note
				Min.	Typ.	Max.		
Frequency Range		F ₀		5		150	MHz	
Standard Frequencies				10.000/100.000/125.000			MHz	
RF Output								
Output Waveform				Sine wave				
Load		R _L	+/-5%		50		Ohm	
Output Level				+7			dBm	
Harmonics						-30	dBc	
Spurious						-90	dBc	
Power Supply								
Voltage		Vcc		4.75	5.0	5.25	V	Optional
				11.4	12.0	12.6		
Current Consumption		I _{Steady}	For Vcc=5.0V @ 25°C			250	mA	Optional
			For Vcc=12.0V @ 25°C			150		
Current Consumption		I _{Warm-up}	For Vcc=5.0V			600	mA	Optional
			For Vcc=12.0V			350		
Warm-up Time			ΔF _{final} /f ₀ <+/-0.1ppm @ 25°C		3	5	min	
Frequency Control*								
Electronic Frequency Control(EFC)			For AT-Cut	+/-2		+/-5	ppm	Optional
			For SC-Cut	+/-0.8				
Reference Voltage		V _{REF}	5MHz ~ 150MHz		4.0		V	Optional
			<=40MHz		5.0		V	
			>40MHz		10.0		V	
EFC Voltage		Vc		0	V _{REF} /2	V _{REF}	V	
EFC Input Impedance				100			Kohm	
EFC Slope		Δf/Vc		Positive				
Frequency Stability								
Initial Tolerance			Vc @ V _{REF} /2 @ 25°C			+/-300	ppb	
Vs. Operating Temperature Range						+/-200	ppb	For more information, Please consult sale
Vs. Supply Voltage Variation(Pushing)			Vcc+/-5%			+/-10	ppb	
Vs. Load Change(Pulling)			Load+/-5%			+/-5	ppb	
Aging	Long Term Per Day (After 30 Days Operation)		For AT-Cut			+/-10	ppb	
			For SC-Cut			+/-2		
	Long Term 1 st Year (After 30 Days Operation)		For AT-Cut		+/-300	+/-500	ppb	
			For SC-Cut		+/-50	+/-200		
Phase Noise								
Consult Sale								
Environmental								
Operating Temperature Range		-55°C to +85°C						
Storage Temperature Range		-55°C to +125°C						
Packing		Palette						
Size		27.8x27.8x15.5mm max,						
Weight		20g max						