

OCXO5050L

Ultra-Low Phase Noise OCXO

Features and Benefits

- Ultra-Low phase noise
- Low vibration sensitivity
- Sine wave output
- Frequency Tuning Input
- 50x50x30mm

Description

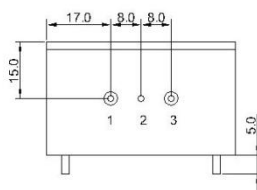
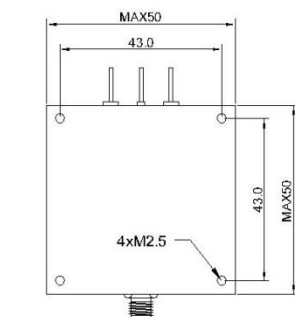
OCXO5050L series is ultra-low phase noise OCXO in vibration-isolated package.

Typical Applications

- Signal Analyzer Reference for internal synthesizers
- SATCOM Systems
- Harsh Environment Applications

Mechanical Drawing & Pin Connections

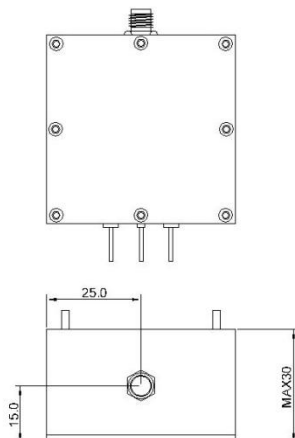
Drawing No: MD140049-2



Pin Connection:

Pin#	Symbol	Function
1	Vs	Supply Voltage
2	GND	Ground
3	Vc	Control Voltage(EFC)
SMA	RF OUT	RF Output

Unit : mm



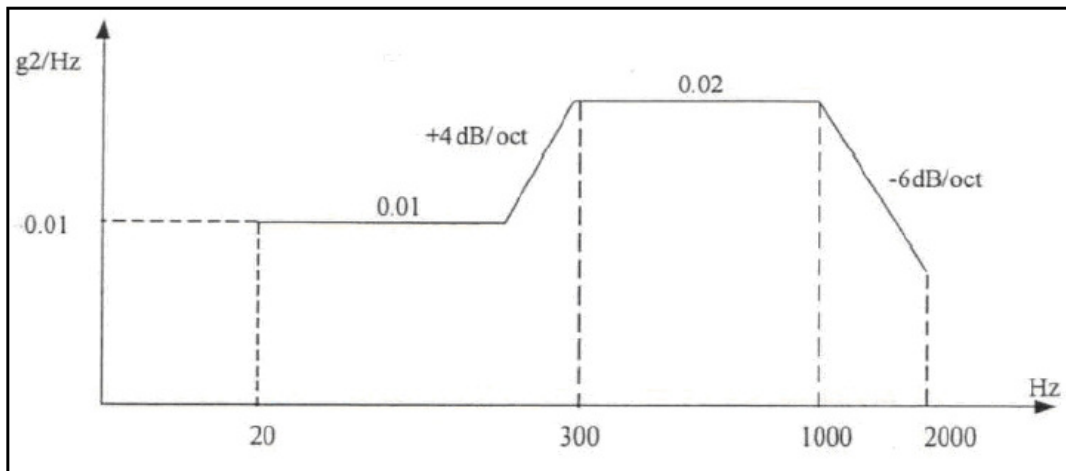
OCXO5050L

Ultra-Low Phase Noise OCXO

Specifications

OCXO Specification	Sym	Condition	Value			Unit	Note				
			Min.	Typ.	Max.						
Frequency Range	F ₀		50		130	MHz					
Standard Frequencies			100.000/120.000			MHz					
RF Output											
Output Waveform			Sine wave								
Load	RL	+/-5%		50		Ohm					
Output Level			+7			dBm					
Harmonics				-40	-30	dBc					
Spurious At Rest					-90	dBc					
Power Supply											
Voltage	Vcc		11.400	12.000	12.6000	V	Other supply voltage on request				
Current Consumption		Warm-up			500	mA					
		Steady-state@+25°C			300	mA					
Warm-up Time@+25°C		△f _{final} /fo<+/-0.1ppm			5	min					
Frequency Control*											
Frequency Adjust Range			+/-1	+/-2		ppm	Tuning Slope: Positive				
Control Voltage			1	5	9	V					
Internal Resistance			100			Kohm					
Frequency Stability											
Initial Tolerance @+25°C		Vc=5V			+/-300	ppb					
Vs. Operating Temperature Range		-40 °C to +85°C Steady state		+/-100	+/-200	ppb	Other stability and temperature range on request				
Vs. Supply Voltage Change		Vs+/-5%			+/-10	ppb					
Long Term Per Day		After 30days operation			+/-2	ppb					
Long Term Per Year		After 30days operation			+/-100	ppb					
Phase Noise											
Offset	100MHz					120MHz					Unit
	A	B	C	D	E	A	B	C	D	E	
10Hz	-90	-95	-97	-100	-105	-85	-90	-95	-97	-100	dBc/Hz
100Hz	-125	-130	-132	-135	-137	-118	-122	-125	-127	-130	
1KHz	-155	-158	-160	-162	-164	-148	-150	-153	-155	-157	
10KHz	-165	-168	-170	-172	-174	-160	-165	-168	-170	-172	
100KHz	-175	-175	-175	-175	-175	-175	175	175	175	175	
Viriation Sensitivity											
Option	Phase noise @1KHz					Unit					
140	-140					dBc/Hz					
145	-145										
150	-150										
155	-155										
Environmental											
Operating Temperature Range	-40°C to +85°C										
Storage Temperature Range	-55°C to +125°C										
Size	50.0 x 50.0 x 30.0mm Max.										
Weight	200g Max.										

Vibration Profiles



PSD = 0.02 g²/Hz according to RTCA/DO160E Curve C

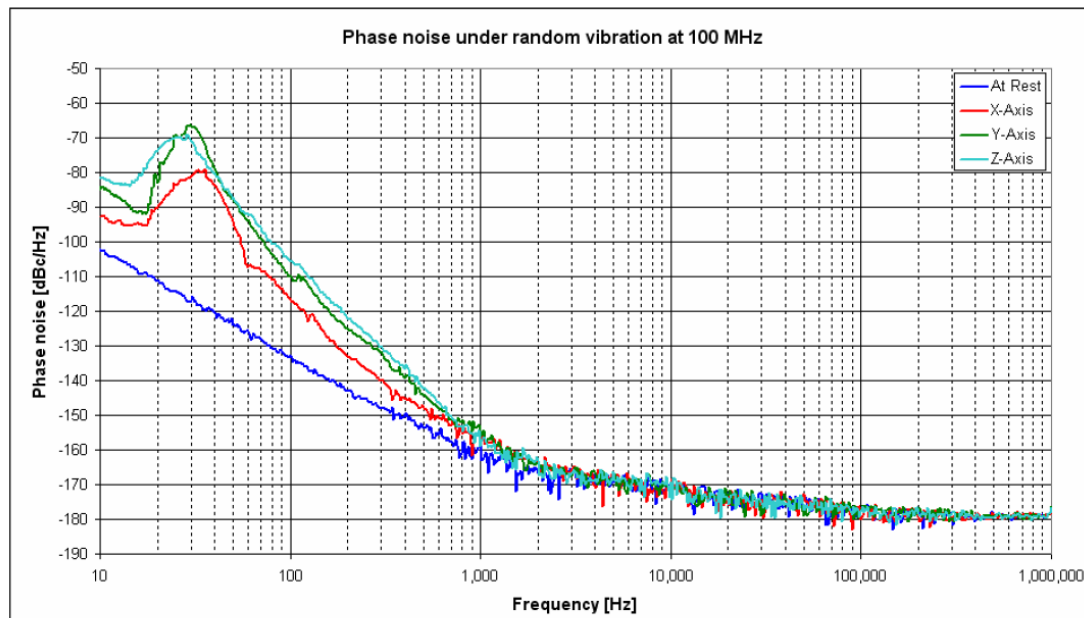
Functional test: 1 hour each direction

Endurance test: 3 hours each direction at 2 times the PSD level of the functional test

Notes:

- Other vibration profiles on request
- Enclosure height depends on vibration profile

Phase noise response under random vibration



Typical phase noise response for vibration sensitivity option "155"