

Features and Benefits

Frequency range: 495 to 505MHz
Low phase noise
Linear tuning characteristics
Low pushing / Low pulling
Operating temperature range -55°C to +125°C

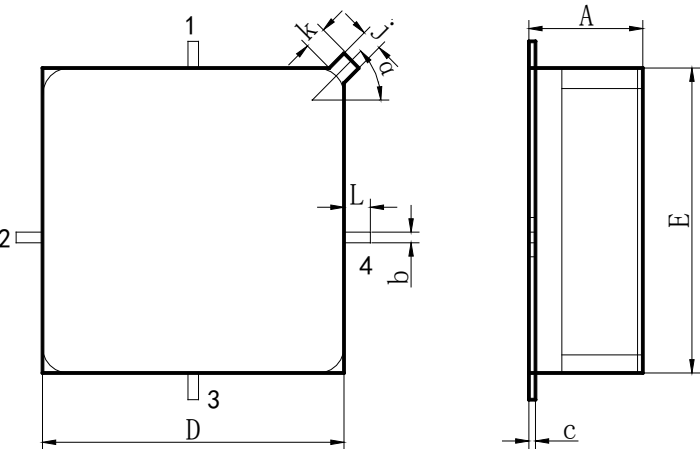
Typical Applications

Signal Analyzer Reference For Internal Synthesizers
Used as Part of a High Performance Oscillator Circuit

Mechanical Drawing & Pin Connections

Drawing No: MD150067-1

All Dimension in MM



- 1. Vcc
- 2. V_T
- 3. GND
- 4. RF Output

Size Symbol	Value		
	Min.	Typ.	Max.
A	4. 00	—	4. 60
b	0. 32	—	0. 62
c	0. 05	—	0. 20
D	11. 07	—	11. 87
E	11. 07	—	11. 87
j	0. 60	—	1. 0
k	0. 50	—	—
L	0. 50	—	—
α	—	45°	—

Specifications

Parameter	Min.	Typical	Max.	Units
Operating Frequency Range	495		505	MHz
Output Power	+10.0			dBm
Power Supply(V _{cc})	4.75	5	5.25	V
Voltage			70	mA
Current			10.0	V
Tuning Voltage (Vt)	1.0		10.0	MHz/V
Tuning Voltage Sensitivity(Kv)	10		30	dBc
Spurious Suppression			-70	dBc
Harmonic Suppression 2nd			-12	dBc
Pushing		5.0		MHz/V
Pulling		1.0		MHz/V
Tuning Port Capacitance		90		pF
Phase Noise @ 10KHz		-98	-95	dBc/Hz
@ 100KHz		-118	-115	dBc/Hz
Operating Temp. Range	-55		+125	°C