

DESCRIPTION:

PLANAR MONOLITHICS INDUSTRIES MODEL NUMBER P2T-500M18G-50-T-SFF-I-SP IS A TERMINATED SINGLE POLE, TWO THROW SWITCH THAT OPERATES FROM 500MHz TO 18.0GHz WHICH HANDLES +23dBm CW INPUT POWER. THE PORT TO PORT ISOLATION IS 50dB MINIMUM. THIS MODEL HAS LOW INSERTION LOSS WHILE STILL OFFERING A FAST SWITCHING SPEED OF 50ns MAXIMUM.

SPECIFICATIONS:

- FREQUENCY: 500 MHz TO 18.0 GHz
- INSERTION LOSS: 2.8dB Maximum
- ISOLATION: 50dB Minimum
- VSWR: 1.9:1 Maximum

- INPUT POWER: +23dBm CW MAXIMUM

- SWITCHING SPEED: 50nsec Maximum

- CONTROL (2 LINE): TTL Logic "0" = INSERTION LOSS
TTL Logic "1" = ISOLATION
*SURGE PROTECTION INCLUDED ON TTL LINES

- DC VOLTAGE 80mA @ +5VDC Typical
80mA @ -12VDC Typical

- CONNECTORS SMA FEMALE

- POWER AND CONTROL - EMI FILTERED SOLDER PINS

- SIZE: 1.00 X 1.00 X 0.50 (H)

- WEIGHT: 1.5 OZ. TYPICAL

- FINISH: BLUE EPOXY POLIMIDE COATING IAW MIL-C-22750, TYPE I OVER EPOXY POLIMIDE PRIMER IAW MIL-P-23377, TYPE I, CLASS 1 OR 3.

ENVIRONMENTAL RATINGS

- TEMPERATURE: -45°C TO +90°C (OPERATING)
-54°C TO +125°C (STORAGE)
- HUMIDITY: MIL-STD-202F, METHOD 103B COND. B
- SHOCK: MIL-STD-202F, METHOD 213B COND. C
- VIBRATION: MIL-STD-202F, METHOD 204D COND. B
- SALT FOG MIL-STD-202F, METHOD 101D-EST COND. B
- THERMAL SHOCK MIL-STD-202F, METHOD 107D COND. A
- FUNGUS MIL-STD-810F, METHOD 508.5
- EMI / EMC MIL-STD-461E

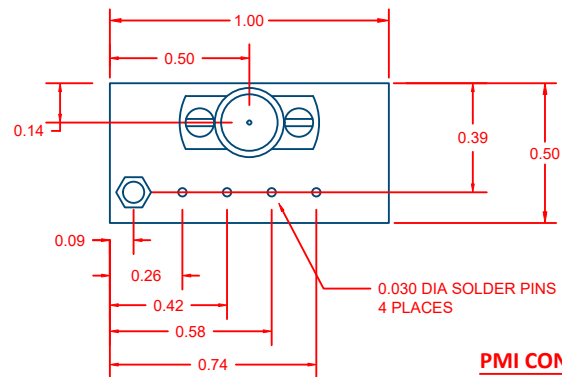
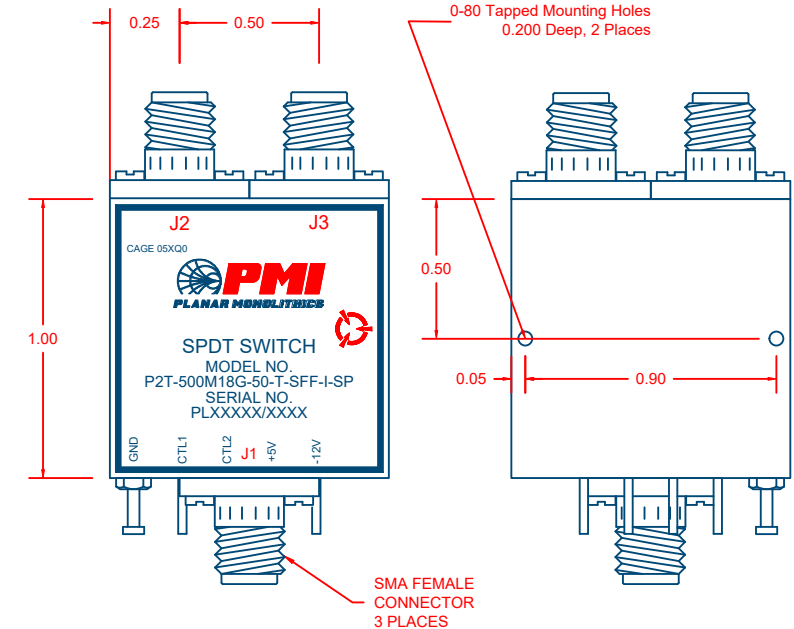
Note: Environmental testing and ESS will be met, but actual testing is not done by PMI
Actual screening is available for an additional charge.

NOTE: THE ABOVE SPECIFICATIONS ARE SUBJECT TO CHANGE OR REVISION

LOGIC TABLE		
CTL1	CTL2	FUNCTION
0	0	*INSERTION LOSS (ALL ON)
0	1	J1 - J2
1	0	J1 - J3
1	1	ISOLATION (ALL OFF)

*NOT TO SPECIFIED VALUES

REVISIONS				
ZONE	REV.	DESCRIPTION	DATE	APPROVED
	1	ORIGINAL RELEASE	10/27/17	
	A1	PAINT UPDATE	7/2/20	



PMI CONFIDENTIAL AND PROPRIETARY

7309-A GROVE ROAD
FREDERICK, MARYLAND 21704 USA
TEL: (301)-662-5019, FAX: (301)-662-1731
WEB: www.quantipmi.com
EMAIL: sales@quantipmi.com
ISO 9001 CERTIFIED



APPROVALS		DATE	TITLE			
DRAWN ANG		09/24/13	PRODUCT FEATURE P2T-500M18G-50-T-SFF-I-SP SP2T SWITCH			
CHECKED CW	10/27/17	SIZE A	FSCM NO. 05XQ0	DWG NO. 27033641	REV. A1	
ISSUED		SCALE N:S	SHEET 1 OF 1			

ALL DIMENSIONS ARE IN INCHES
TOLERANCES:
X.XX ±0.020
X.XXX ±0.010