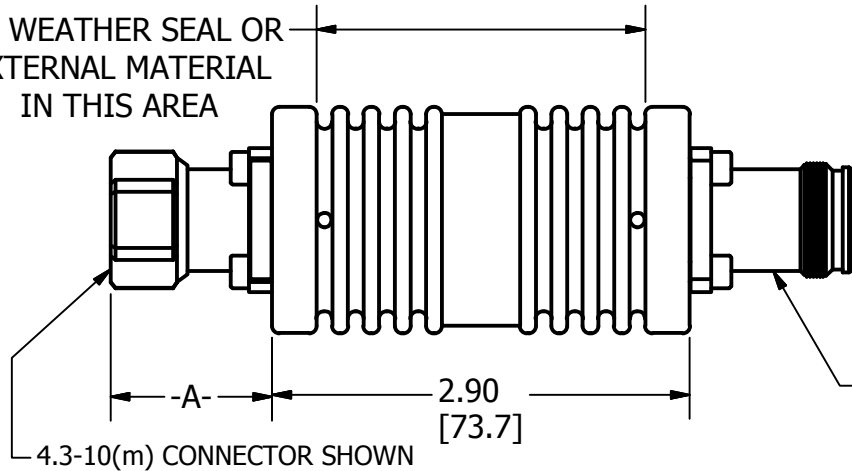
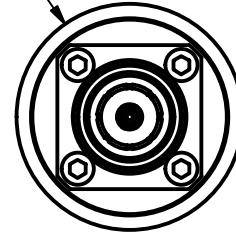


REVISION HISTORY				
ZONE	REV	DESCRIPTION	DATE	APPROVED
	3	COMBINED INTO ONE OUTLINE	3/12/2025	TB
	4	HOUSING WITH FLAT FOR LABEL	5/28/2025	DM

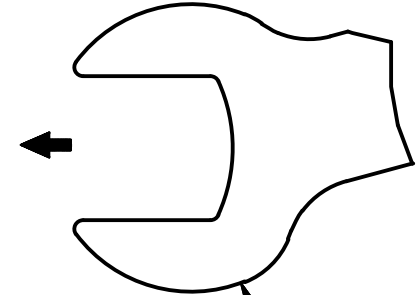
NO WEATHER SEAL OR EXTERNAL MATERIAL IN THIS AREA



Ø1.57
[39.9]



4.3-10(f) CONNECTOR SHOWN



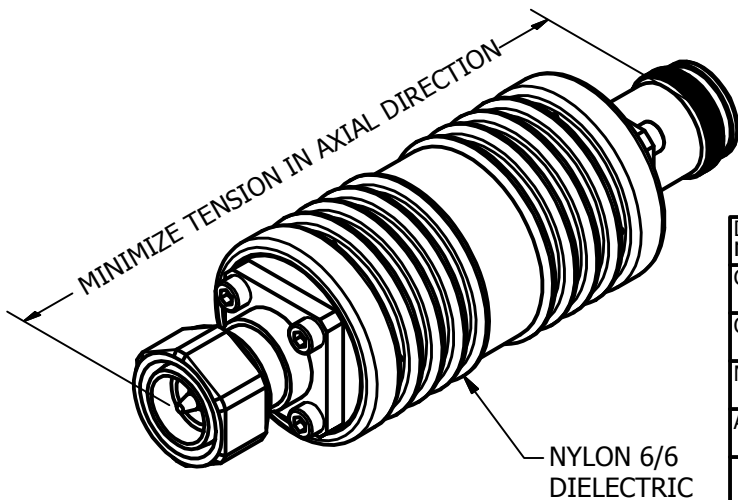
TIGHTEN CABLE WHILE USING 1" [25mm] FIXED WRENCH ON CONNECTOR FLANGE

CONNECTOR OPTIONS		
PART NUMBER	CON. IN	CON. OUT
DC-A36D43FD43F	4.3-10(f)	4.3-10(f)
DC-A36D43MD43F	4.3-10(m)	4.3-10(f)
DC-A36DFDF	7-16 DIN(f)	7-16 DIN(f)
DC-A36DMDF	4.3-10(m)	7-16 DIN(f)

CONNECTOR DIMENSION	
CONNECTOR TYPE	-A-
4.3-10(f)	1.12 [28.5]
4.3-10(m)	1.15 [29.2]
7-16 DIN(f)	1.25 [31.8]
7-16 DIN(m)	1.19 [30.2]

SPECIFICATION:

FREQUENCY RANGE: 1700-6000MHz
 INSERTION LOSS: 0.6dB MAX
 RETURN LOSS: 17.7dB MIN.
 PIM: 160dBc @ 1900MHz
 DC VOLTAGE RATING: 6kV
 IMPEDANCE: 50Ω
 POWER: 100W AVG., 3kW PEAK
 CONNECTORS: BRASS (TRIPLATE)
 DC CONTINUITY: RF ONLY
 DIELECTRIC: NYLON 6/6
 ENVIRONMENT: IP67
 TEMPERATURE: -20°C TO +55°C



UNLESS OTHERWISE SPECIFIED:
ALL UNITS ARE IN inches [mm]

DRAWN mclaughlind	8/4/2022
CHECKED	
QA	
MFG	
APPROVED	
PROPERTY OF R&D MICROWAVES LLC	



TITLE			
DC-A36XX, INNER - OUTER DC BLOCK			
SIZE A	DWG NO DC-A36XX-OLrev4	REV 4	
SCALE 1 : 1	SHEET 1 OF 1		