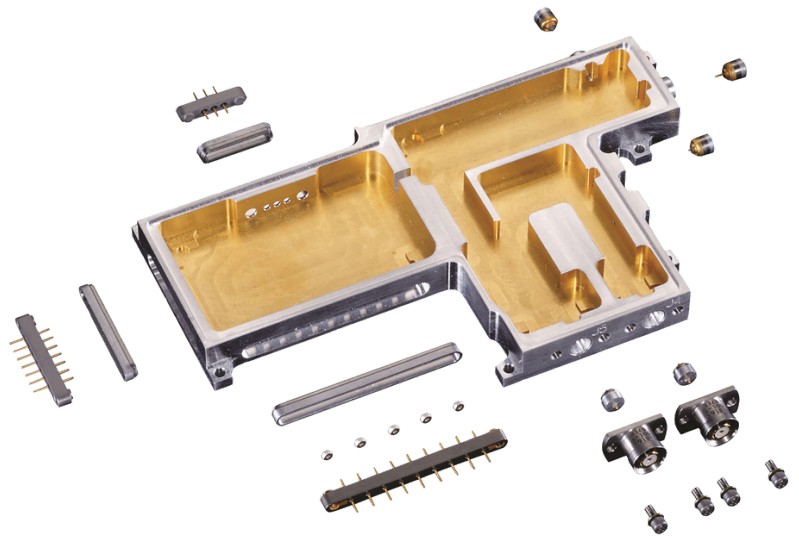


Hermetic Electronic Packaging

PacAero specializes in the design, manufacture, and integration of ultra-rugged, hermetic electronic packaging for use in extreme environments.

Whether it's integrating hermetic components that protect satellites deep in space or producing hermetic packages for oil-drilling tools that bore deep below the earth's surface, electronic packaging from PacAero delivers the highest levels of reliability



Technical Advantages

Turn-key Electronic Packaging Solutions

PacAero brings our customers' designs to life by precision machining hermetic electronic packages out of aluminum, titanium, stainless steel, Kovar, and other materials.

Packages can be configured with a number of options including: direct glass-to-metal seals, ceramic-to-metal seals, bulk-head DC connectors, Nano-/Micro-/Sub-O connectors and RF/microwave connectors (SMA, SSMA, GPO, GPPO, OSSP, OSM) as well as custom interface connectors.

Laser Weld Construction

We give customers the option to integrate interconnect components via state-of-the-art laser welding processes, or the traditional solder integration method. Our laser-welded connectors and packages deliver a hermetic leak rate of $<1 \times 10^{-9}$ He at 1 ATM even through harsh thermal cycling. As an added benefit, laser weld integration means packages can be easily re-worked (even in a populated state).



Custom Integrated Packages

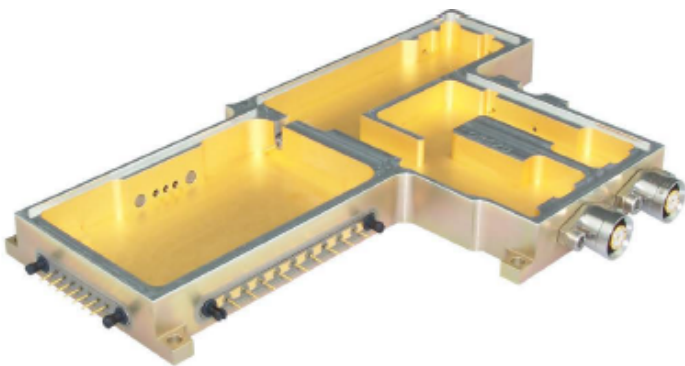
PacAero precision machines custom hermetic electronic packages for applications that require light weight and/or low CTE.

We also manufacture and integrate high-performance interconnect components such as: Nano-, JuniorMicro-, and Sub-D connectors; RF/Microwave connectors; sight or wave-guide windows and custom electrical feed-thrus.

Our unique brazing capabilities give us the ability to also produce Ti packages with CuMo heat-sinks integrated in strategic locations. See our Ti Composite Packaging data sheet for more information.

Aluminum Packages

Aluminum is a lightweight material with high thermal conductivity. PacAero uses precision CNC machining techniques to manufacture aluminum hermetic electronic packages. Our DC and RF connectors can then be integrated via laser welding, eliminating the possibility of solder joint fatigue failure. PacAero's aluminum packaging is hermetic through harsh thermal cycling.



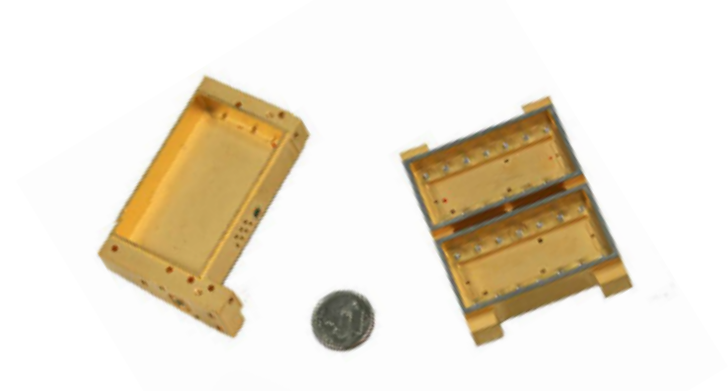
Titanium Packages

Titanium is also a lightweight material that we put through a precision CNC machining process to produce hermetic electronic packages. Titanium is often selected over aluminum alternatives because that material delivers lower CTE.

Our machined titanium housings can also be integrated with our DC and RF connectors, removing the possibility of solder fatigue related hermetic failures. Titanium packaging remains hermetic through harsh thermal cycling.

Kovar Packages

An industry standard for decades, PacAero's Kovar hermetic electronic packages have a low CTE, low thermal conductivity and direct sealing capabilities. These robust precision machined housings can be integrated with the PacAero's laser weldable DC and RF connectors, removing the possibility of solder fatigue related hermetic failures.



For more information, contact us at info.wenatchee@pacaero.com

PacAero

434 Olds Station Rd
Wenatchee, WA 98801

TEL 509.664.8000
URL pacaero.com