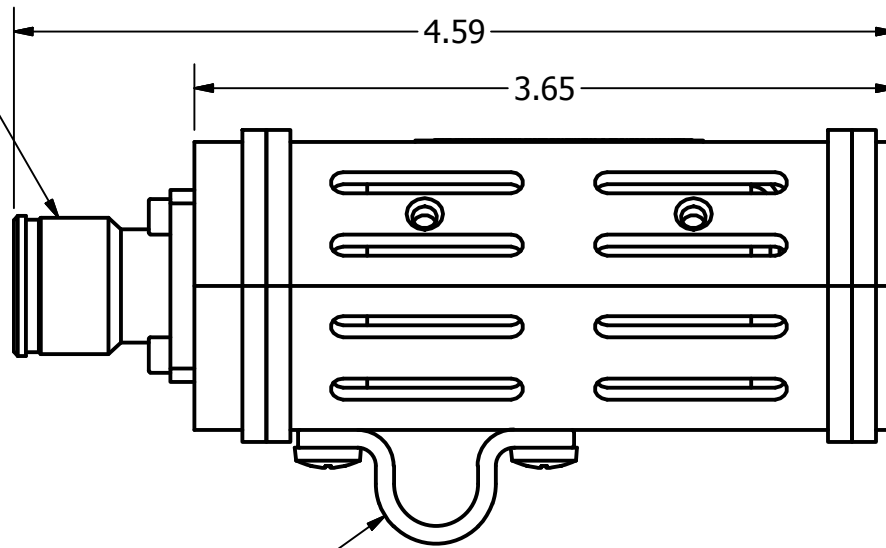


4.3-10(f)
SHOWN
(SEE CONNECTOR TABLE)

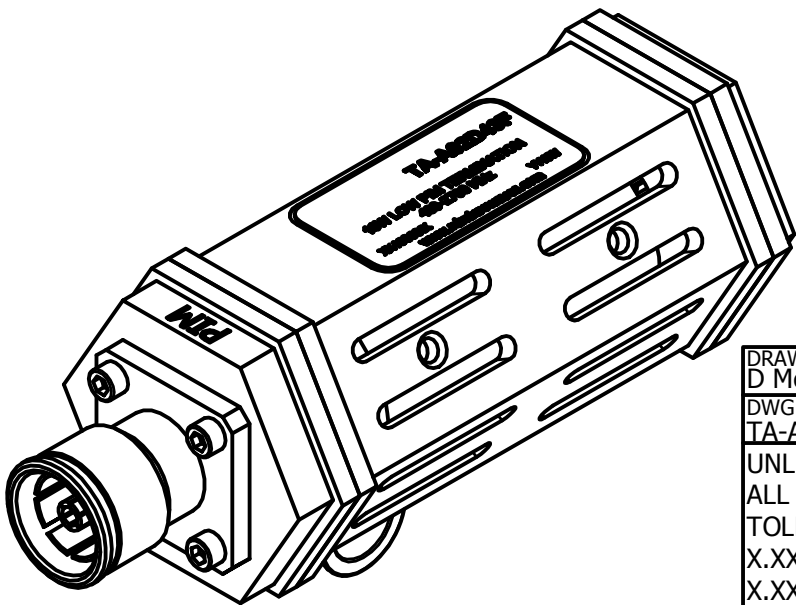


UNIT SUPPLIED
WITH LANYARD

CONNECTOR				
4.3-10	7-16 DIN	TYPE N	NEX10	SMA
TA-A82D43M	TA-A82DM	TA-A82NM	TA-A82NXM	TA-A82SM
TA-A82D43F	TA-A82DF	TA-A82NF	TA-A82NXF	TA-A82SF

POWER: 0 - 20 WATTS
 VSWR (RETURN LOSS):
 270-400MHz: 1.25:1 (19dB) MAX
 400-1700MHz: 1.18:1 (22dB) MAX
 1700-6000MHz: 1.25:1 (19dB) MAX
 6000-8000MHz*: 1.35:1 (16.5dB) MAX
 PIM: 165dBc

*7-16 DIN CONNECTOR VERSION
 NOT RATED OVER 6000MHz



DRAWN D McLaughlin 6/12/2026
 DWG NO TA-A82-01rev7
 UNLESS OTHERWISE SPECIFIED:
 ALL UNITS ARE IN inches [mm]
 TOLERANCE:
 X.XX ±0.01
 X.XXX ±0.005



Made in USA
 Designed, Assembled, Tested



TITLE			
LOW PIM TERMINATION			
SIZE A	MODEL NO TA-A82X	REV 7	
SCALE 1 : 1	PROPERTY OF R&D MICROWAVES LLC	SHEET 1 OF 1	