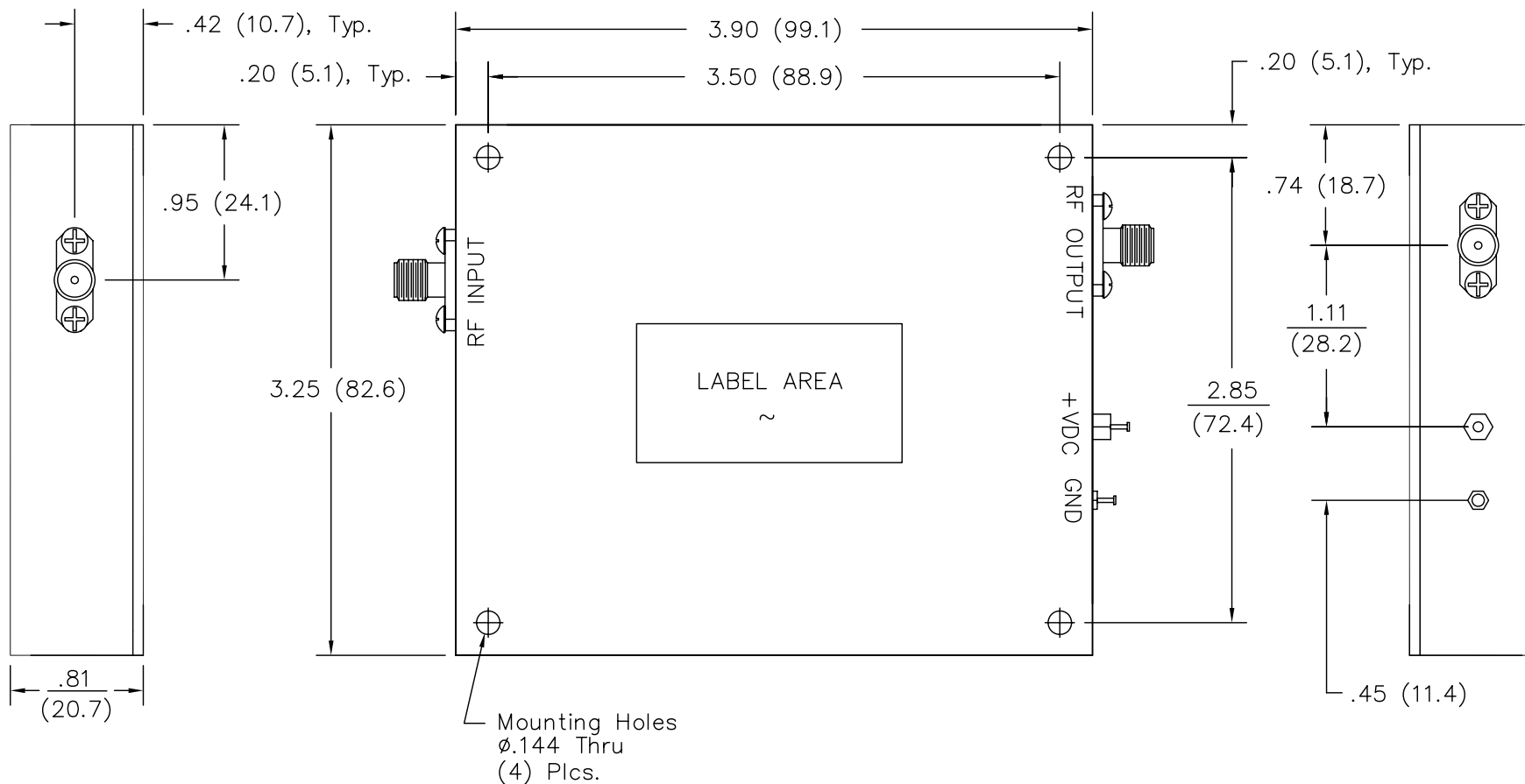


MICROWAVE SOLUTIONS INC.
 PROPRIETARY AND PRIVATE
 THE INFORMATION CONTAINED IN THIS
 DOCUMENT OR ITEM IS THE
 PROPERTY OF MICROWAVE SOLUTIONS
 INC. (MSI) AND SHALL BE KEPT IN
 STRICT CONFIDENCE EXCEPT WITH
 WRITTEN PERMISSION OF MSI.

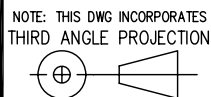
REVISIONS			
REV.	DESCRIPTION	DATE	APPRVD
D	REVISED PER ECO 3083 SY	5/25/07	




NOTES:

- RF Connectors are SMA Female.
- Finish: Electroless Nickel Plate, .001" (min) to .0015" (max) thickness per MIL-C-26074B, top surface only.

THIS DWG IS PRELIMINARY
 UNLESS STAMPED
 RELEASED



UNLESS OTHERWISE SPECIFIED DIMENSIONS ARE IN INCHES	DRAWN	A. HALL	930804
TOLERANCES ARE: FRACTIONS DECIMALS ANGLES $\pm 1/64$ $XX \pm .02$ $\pm 1/2^\circ$ $XXX \pm .010$	CHECKED		
UNLESS OTHERWISE SPECIFIED \checkmark ALL OVER	ENG.		
MATERIAL:	PROD.		
FINISH:	Q.A.		
DO NOT SCALE DRAWING	APPROVALS		
	CAD FILE:	OL1466_D	

 NATIONAL CITY microwave solutions inc. CALIFORNIA			
OUTLINE, AMPLIFIER			
SIZE	FSCM NO.	DWG.NO	REV.
A	65151	OL-001466	D
SCALE	1:1		SHEET 1 OF 1