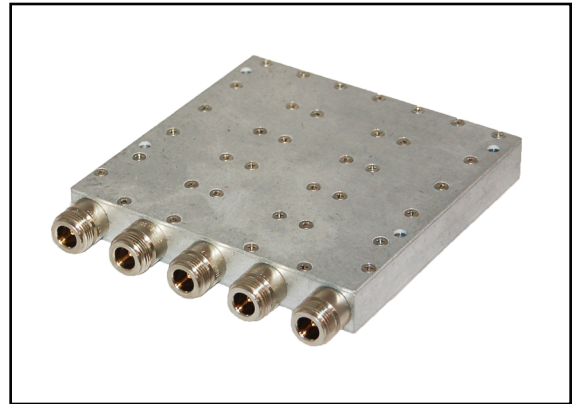


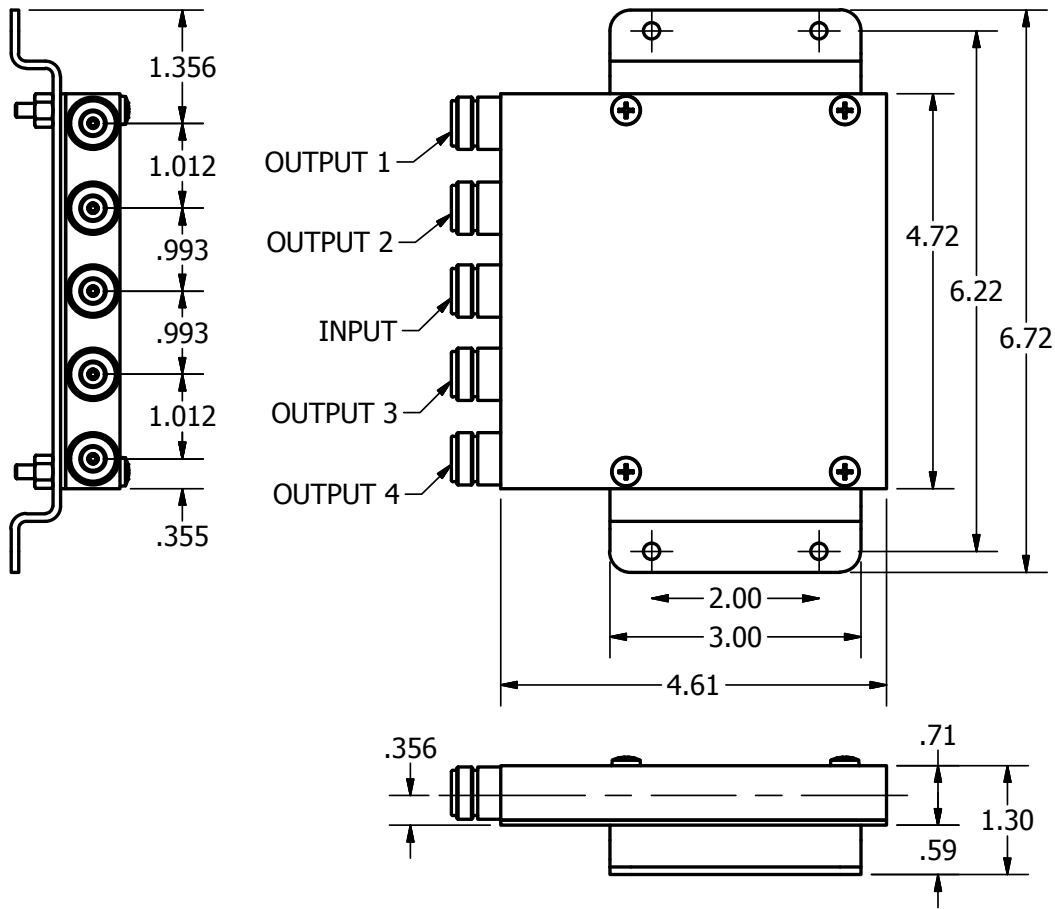
POWER DIVIDER

D4-A20, 4-Way 380-2900 MHz

Model	D4-A20
Frequency Range:	380-2900 MHz
Max Insertion Loss, 380 MHz:	0.4 dB
960 MHz:	0.6 dB
1710 MHz:	0.7 dB
2200 MHz:	1.1 dB
2900 MHz:	1.4 dB
Isolation:	20 dB min (25 dB Typ.)
Return Loss Input/Output	1.3:1 Max / 17.7 dB Min
Amplitude Balance:	0.2 dB
Phase Balance:	$\pm 3^\circ$
Max Power, Combiner:	5 Watts
, Divider:	50 Watts
Connectors:	Type N(f)
Material, Housing:	Aluminum, Conversion coating RoHS Compliant
Environment:	Indoor



The Model D4-A20 is a 4-way Wilkinson microstrip 7 section power divider, in phase, 50 Watts input power working into a 3:1 VSWR load mismatch. It is supplied with Type N female connectors. The unit has a minimum isolation of 20dB. Higher power levels and other connector types can be supplied upon request.



R&D Microwaves LLC, 301 Rockaway Valley Road, Boonton, NJ 07005 USA
 Tel. 908.212.1696 www.rdmicrowaves.com
 email: sales@rdmicrowaves.com