

TYPICAL CHARACTERISTICS
ON
APD-3-218-SFF-30W



TESTED BY: E. KRETZ
REPORTED BY: V. PRATAP
DATE: 01/12/2026

TYPICAL CHARACTERISTICS ON APD-3-218-SFF-30W

PRODUCT FEATURE

DESCRIPTION:

PMI MODEL NUMBER APD-3-218-SFF-30W A 3-WAY POWER DIVIDER OPERATING OVER THE 2 TO 18 GHz FREQUENCY RANGE. THIS POWER DIVIDER DEMONSTRATES A MAXIMUM INSERTION LOSS OF 1.6 dB (ABOVE 4.77 dB SPLIT) AND A MINIMUM ISOLATION OF 20 dB.

SPECIFICATIONS:

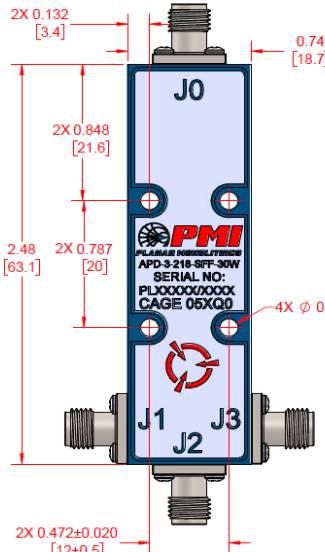
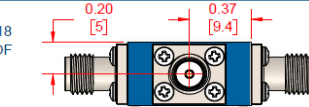
- FREQUENCY RANGE:..... 2 TO 18 GHz
- INSERTION LOSS:..... 1.6 dB MAX
(ABOVE 4.77 dB SPLIT)
- VSWR:..... INPUT: 1.65:1 MAX
OUTPUT: 1.65:1 MAX
- ISOLATION:..... 20 dB MIN.
- AMPLITUDE BALANCE:..... ±0.7 dB MAX
- PHASE BALANCE:..... ±9° MAX
- POWER HANDLING:..... FORWARD 30 W MAX
REVERSED 1 W MAX
- PORT CONNECTORS:..... SMA FEMALE
- FINISH:..... PAINTED BLUE



ENVIRONMENTAL RATINGS:

- TEMPERATURE:..... -55°C TO +85°C (OPERATING)
- HUMIDITY:..... MIL-STD-202, METHOD 103B COND. B
- SHOCK:..... MIL-STD-202, METHOD 213B COND. B
- VIBRATION:..... MIL-STD-202, METHOD 204D COND. B
- ALTITUDE:..... MIL-STD-202, METHOD 105C COND. B
- TEMPERATURE CYCLE:..... MIL-STD-202, METHOD 107D COND. A

NOTE: SPECIFICATIONS WILL VARY OVER TEMPERATURE
NOTE: THE ABOVE SPECIFICATIONS ARE SUBJECT TO CHANGE OR REVISION



ZONE	REV.	DESCRIPTION	DATE	APPROVED
	A1	ORIGINAL RELEASE	10/29/2016	

0.394±0.020 [10±1]

0.220±0.020 [5.6±0.5]

0.197±0.020 [5±0.51]

PMI CONFIDENTIAL AND PROPRIETARY

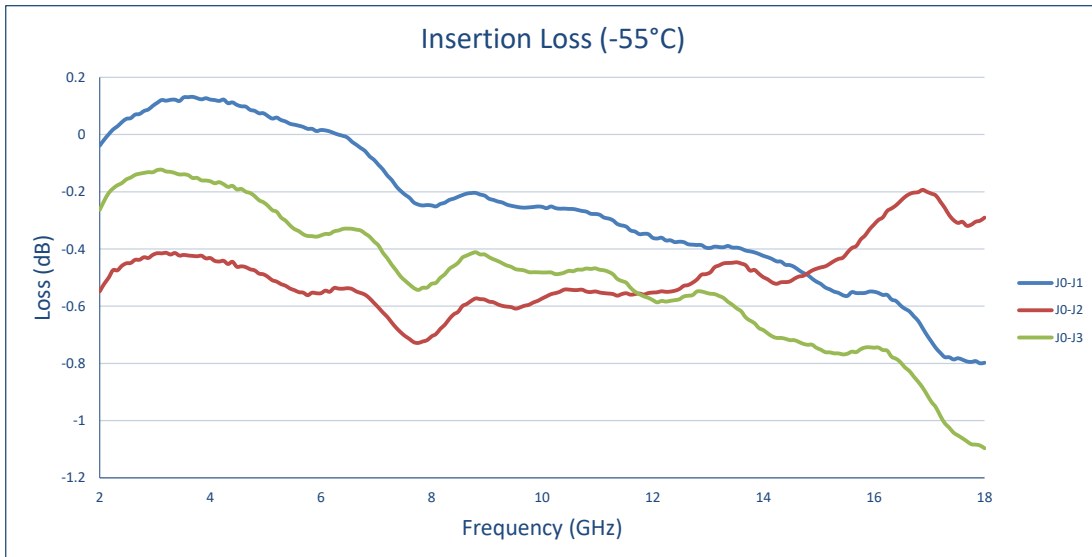
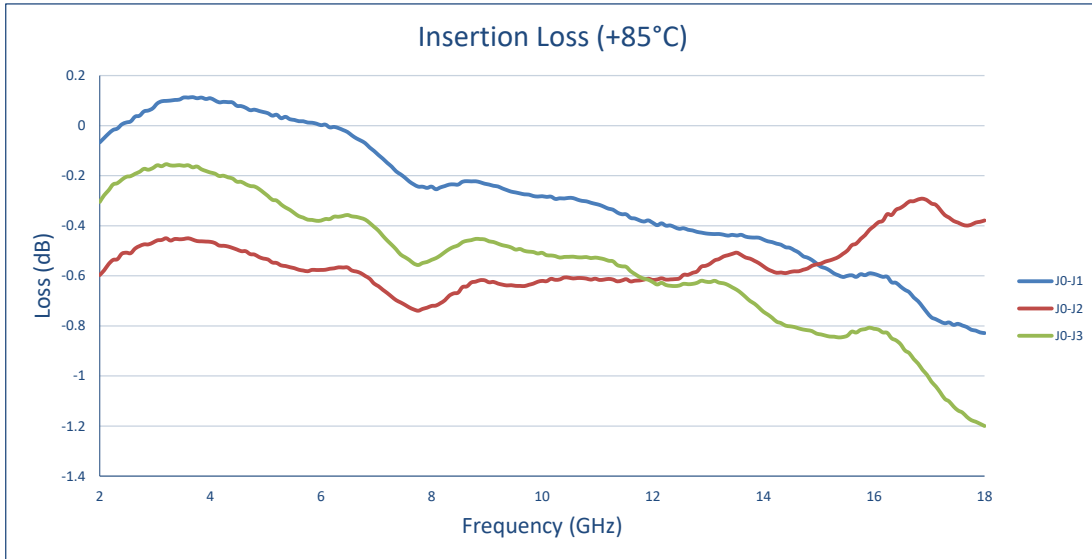
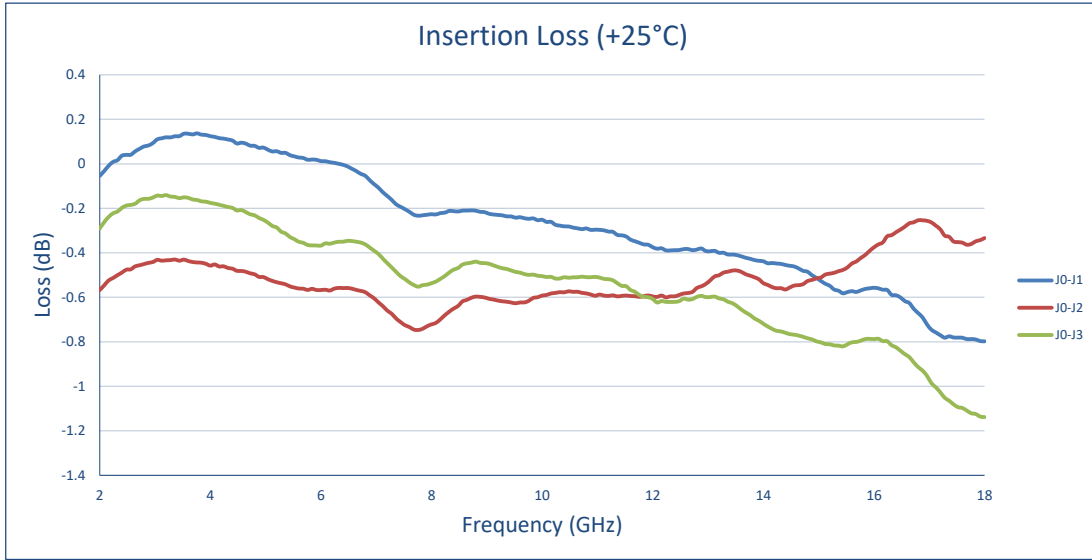
APPROVALS		DATE	TITLE	
DESIGNED	V. FRATAP	10/29/2016	OUTLINE	
DRAWN			APD-3-218-SFF-30W	
REVISION			TRG	FRG NO.
			B	05XQ0
				DWG NO.
				27053320
SCALE 1:1			SHEET 1 OF 1	

**TYPICAL CHARACTERISTICS
ON
APD-3-218-SFF-30W**

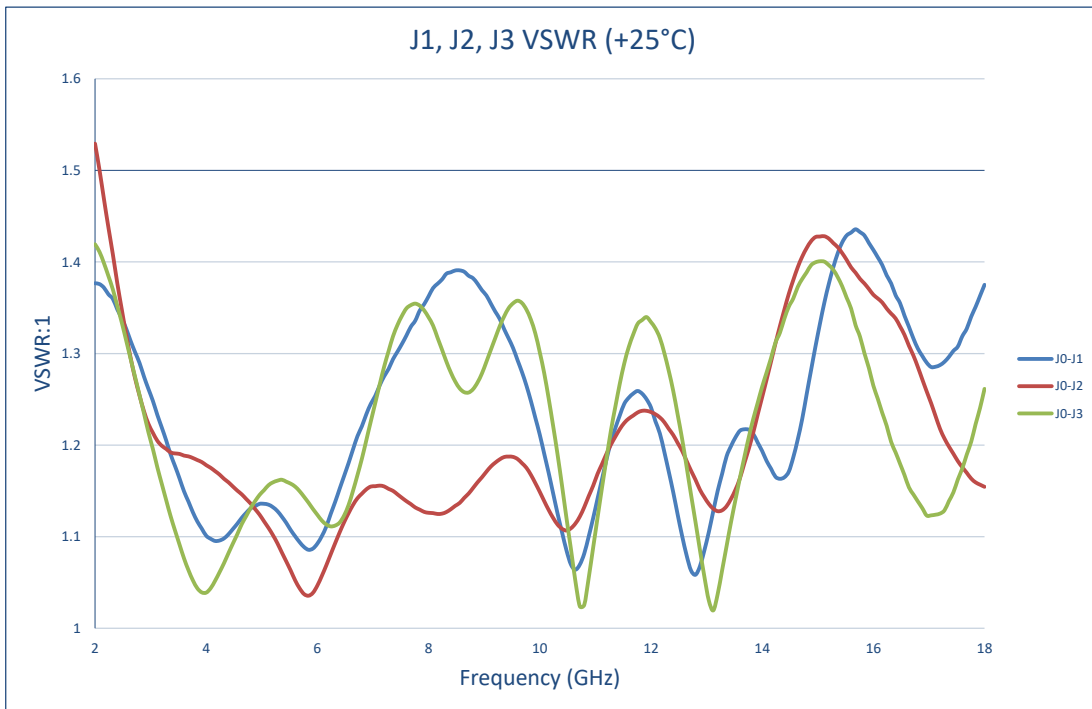
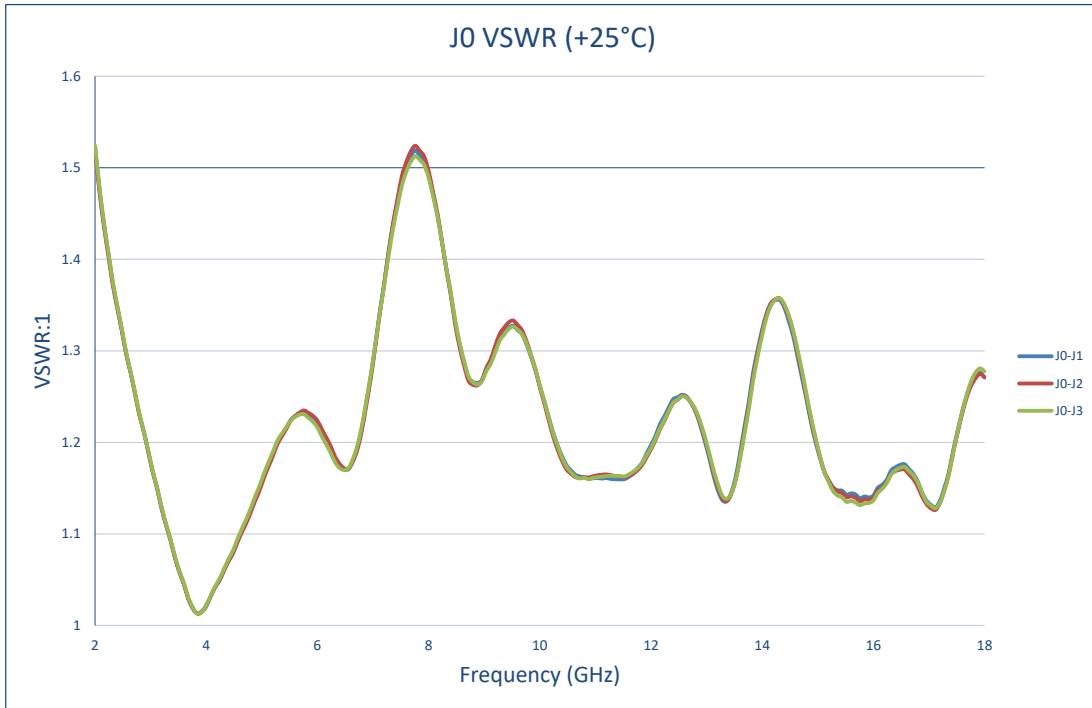
PRODUCT SPECIFICATIONS

TEST ITEM NO.	PARAMETERS	SPECIFIED VALUE	TEST RESULTS		
			-55°C	+25°C	+85°C
1	Frequency Range	2 GHz – 18 GHz	2 GHz – 18 GHz		
2	Insertion Loss	1.6 dB MAX (ABOVE 4.77 dB SPLIT)	1.1 dB See Graph	1.14 dB See Graph	1.2 dB See Graph
3	VSWR	INPUT: 1.65:1 MAX	1.55:1 See Graph	1.52:1 See Graph	1.54:1 See Graph
		OUTPUT: 1.65:1 MAX	1.51:1 See Graph	1.53:1 See Graph	1.54:1 See Graph
4	Isolation	20 dB MIN	21 dB See Graph	21 dB See Graph	21 dB See Graph
5	Amplitude Balance	±0.7 dB MAX	0.44 dB MAX	0.42 dB MAX	0.42 dB MAX
			-0.37 dB MIN See Graph	-0.38 dB MIN See Graph	-0.4 dB MIN See Graph
6	Phase Balance	±9.0° MAX	2.82° MAX See Graph	2.48° MAX See Graph	2.11° MAX See Graph
			-2.82° MIN See Graph	-2.48° MIN See Graph	-2.11° MIN See Graph
7	Power Handling	Forward: 30 W MAX Reversed: 1 W MAX	Forward: 30 W Reversed: 1 W See Graph	Forward: 30 W Reversed: 1 W See Graph	Forward: 30 W Reversed: 1 W See Graph

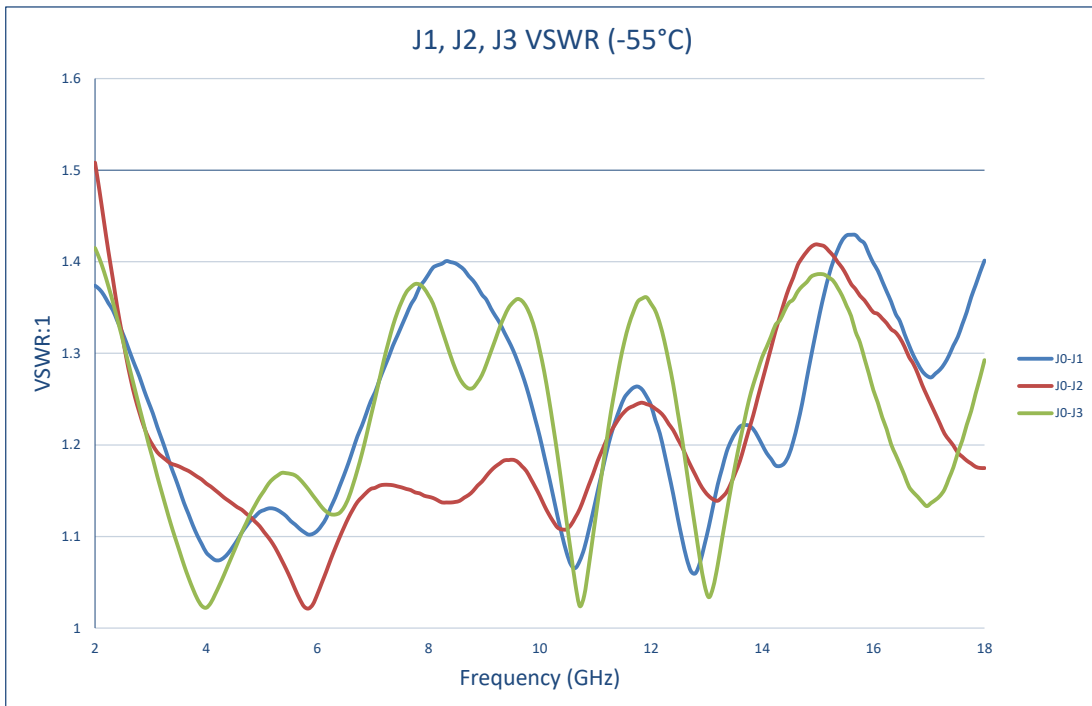
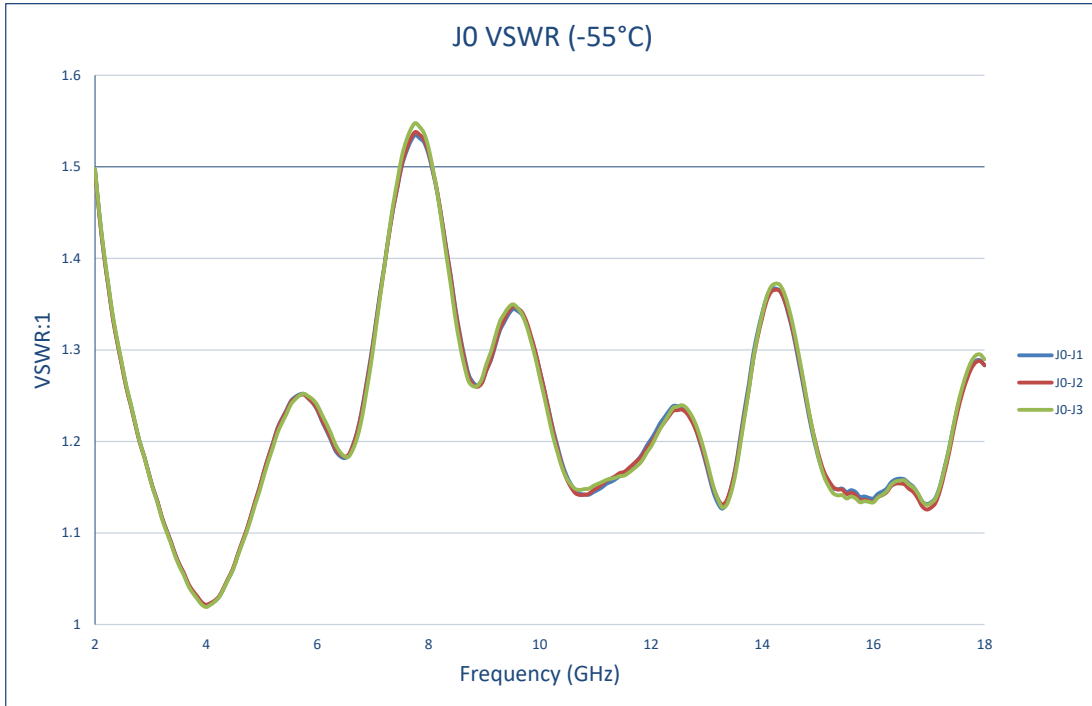
TYPICAL CHARACTERISTICS
ON
APD-3-218-SFF-30W



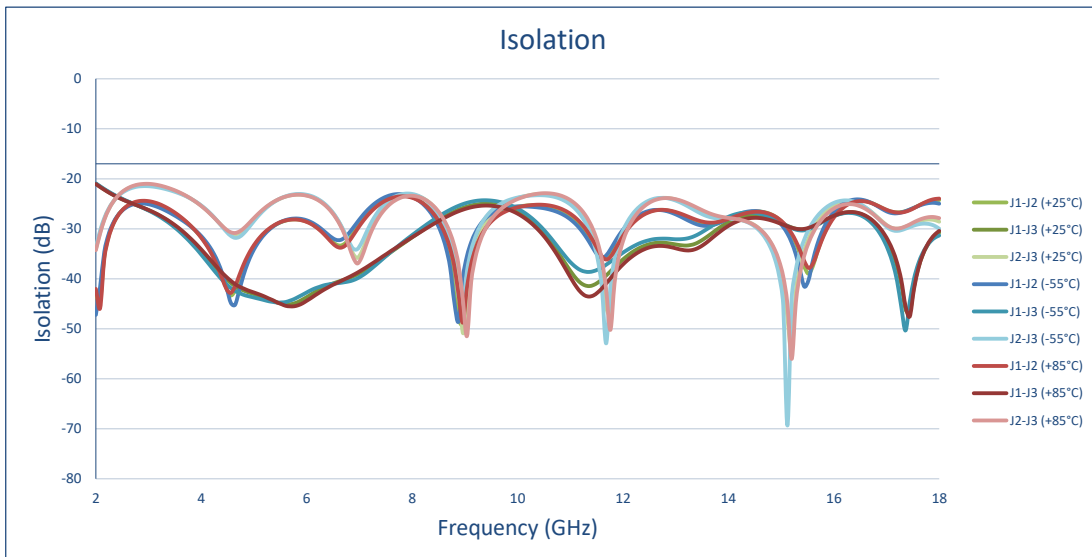
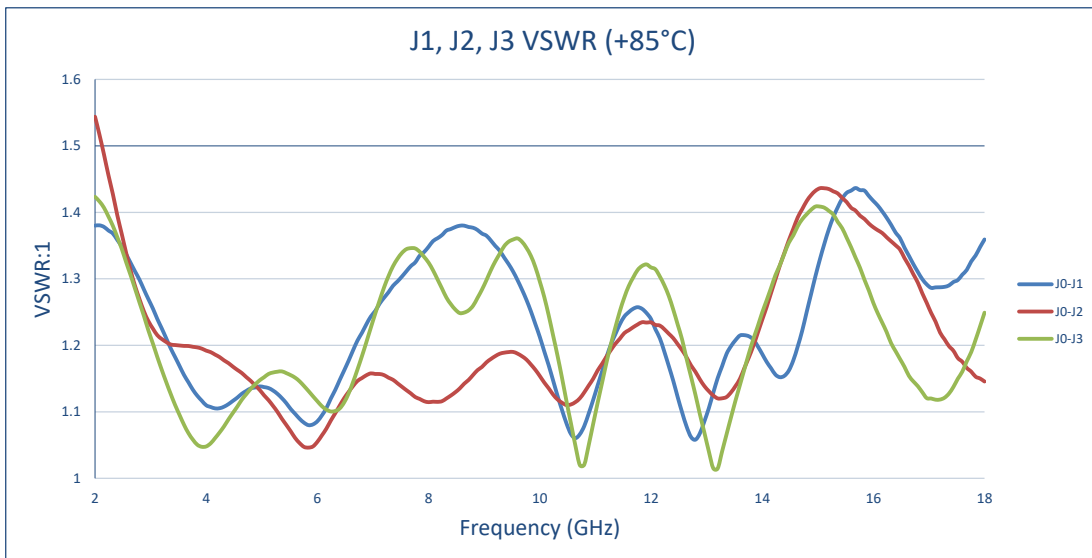
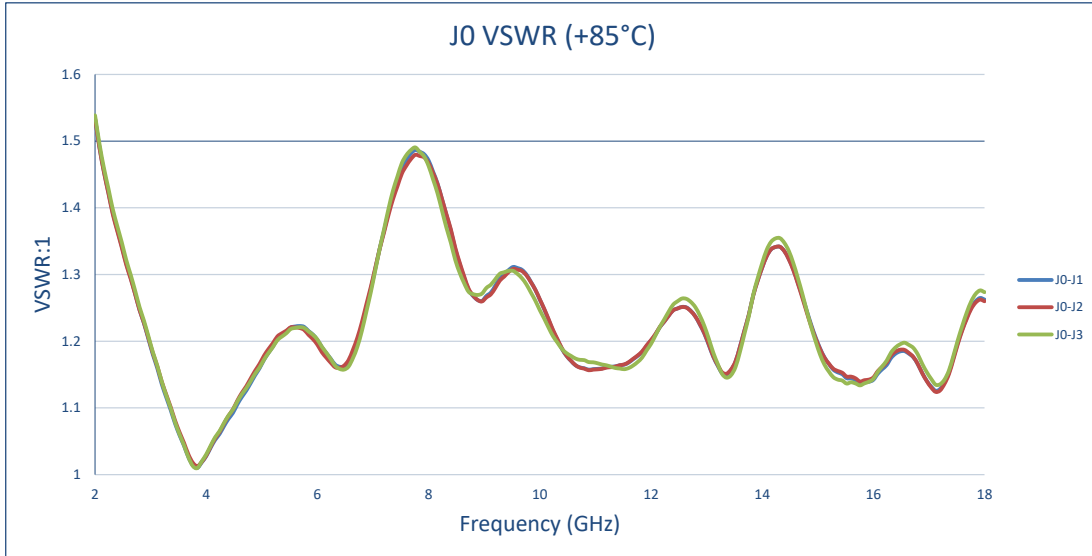
TYPICAL CHARACTERISTICS
ON
APD-3-218-SFF-30W



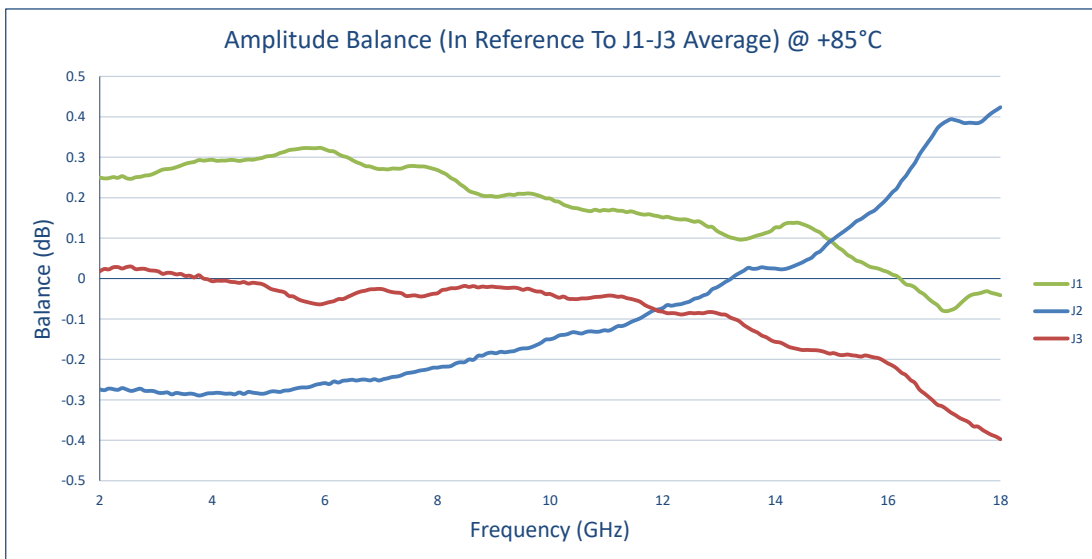
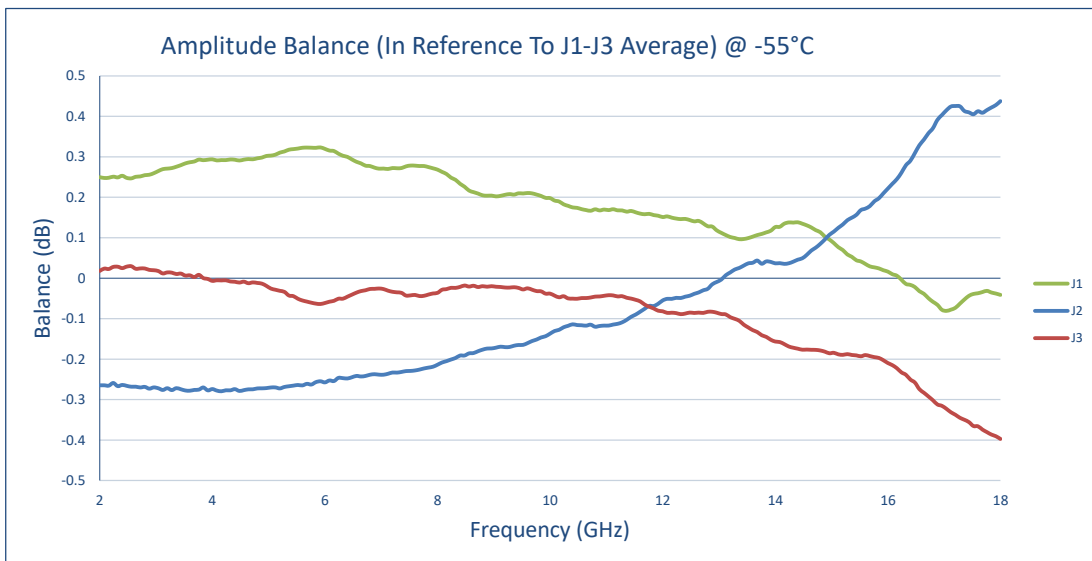
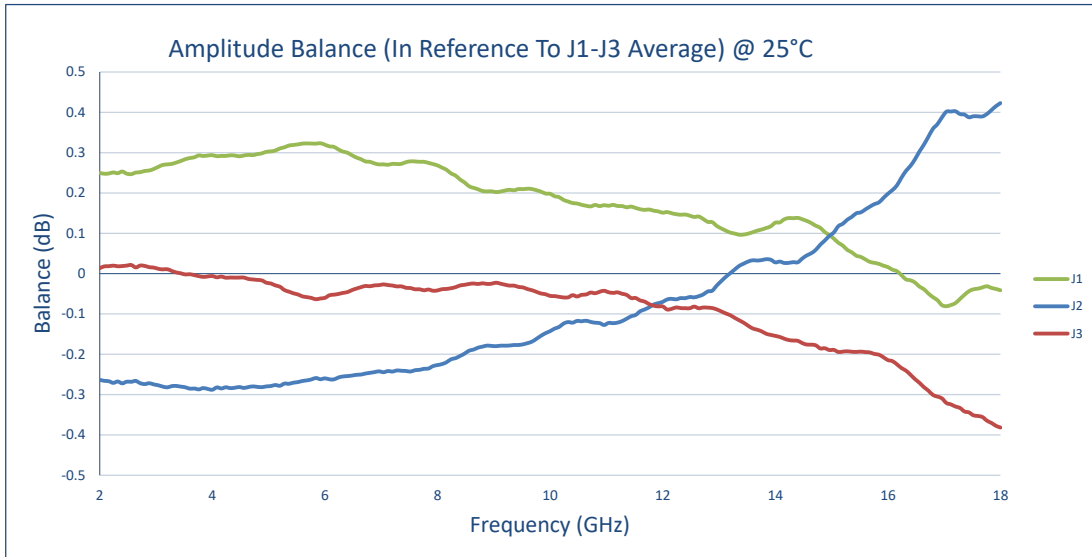
TYPICAL CHARACTERISTICS
ON
APD-3-218-SFF-30W



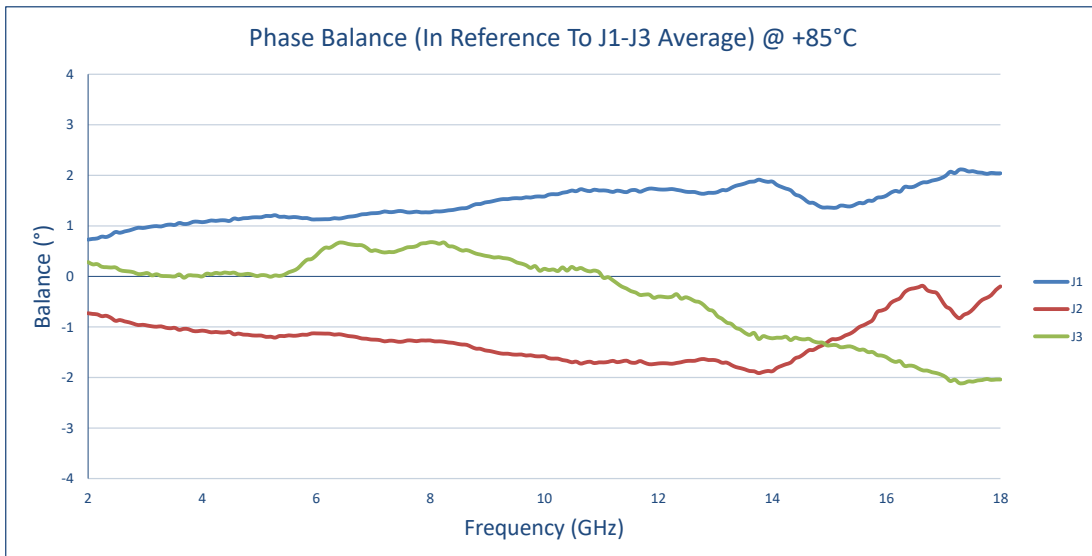
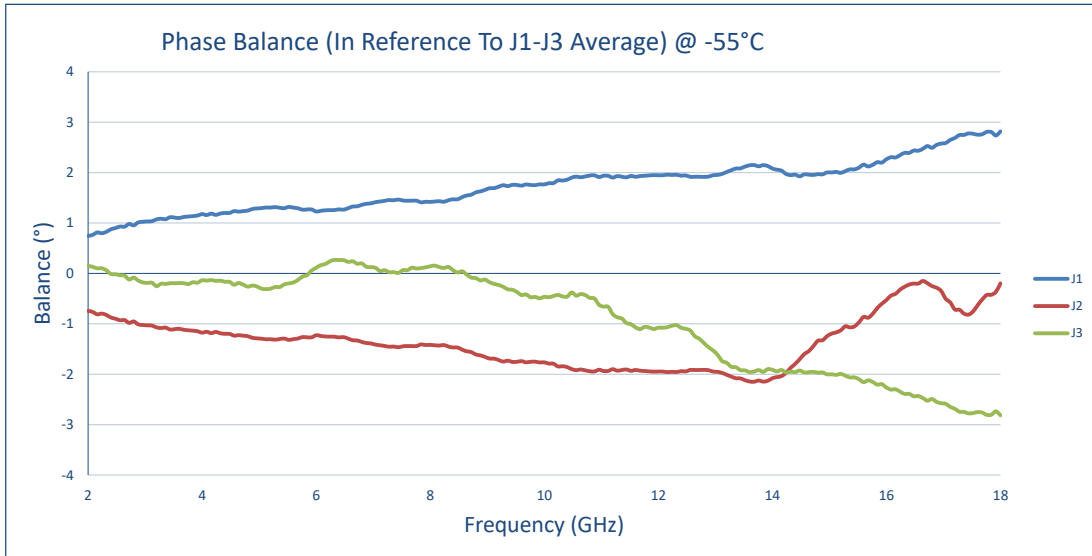
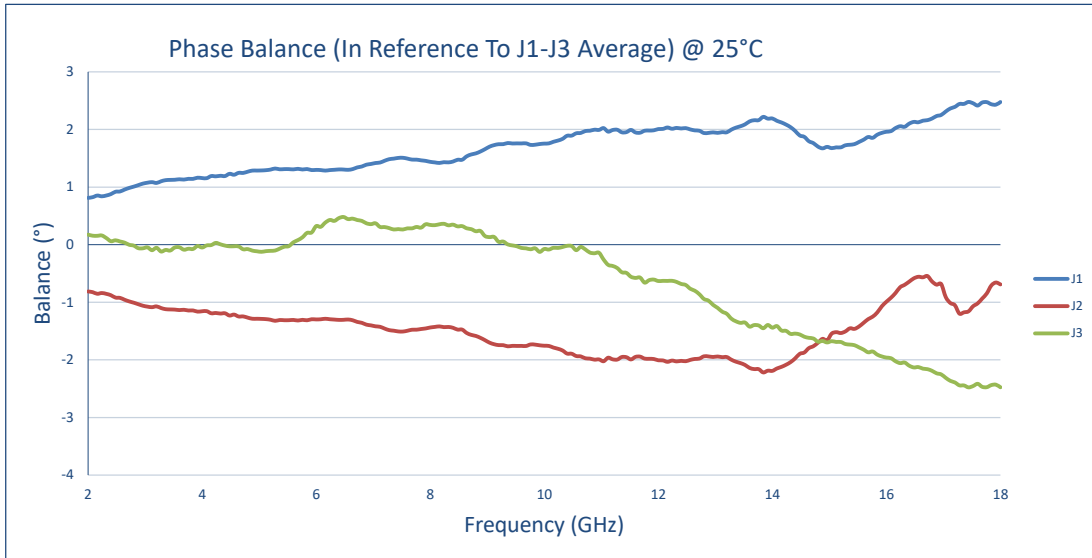
TYPICAL CHARACTERISTICS
ON
APD-3-218-SFF-30W



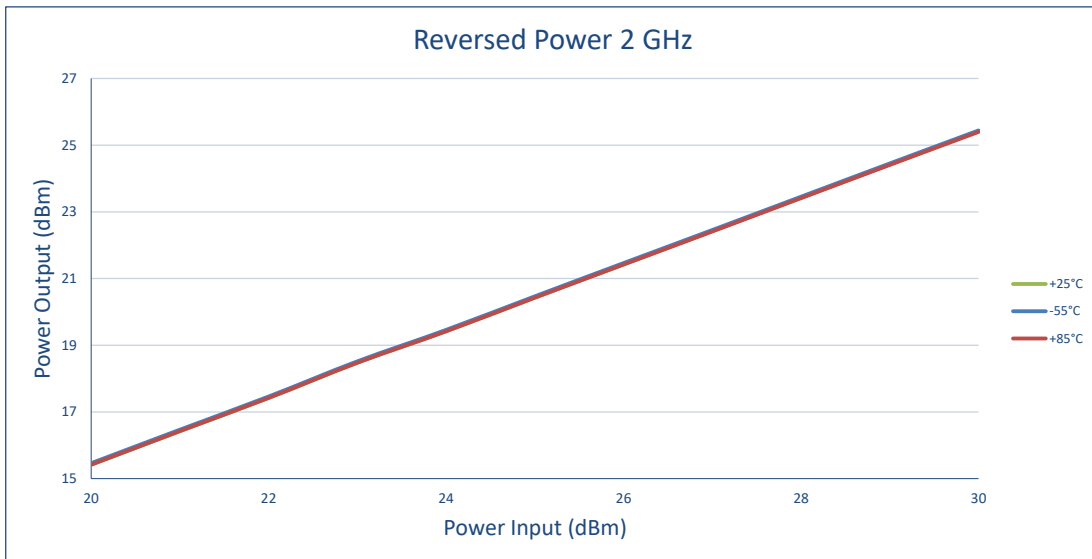
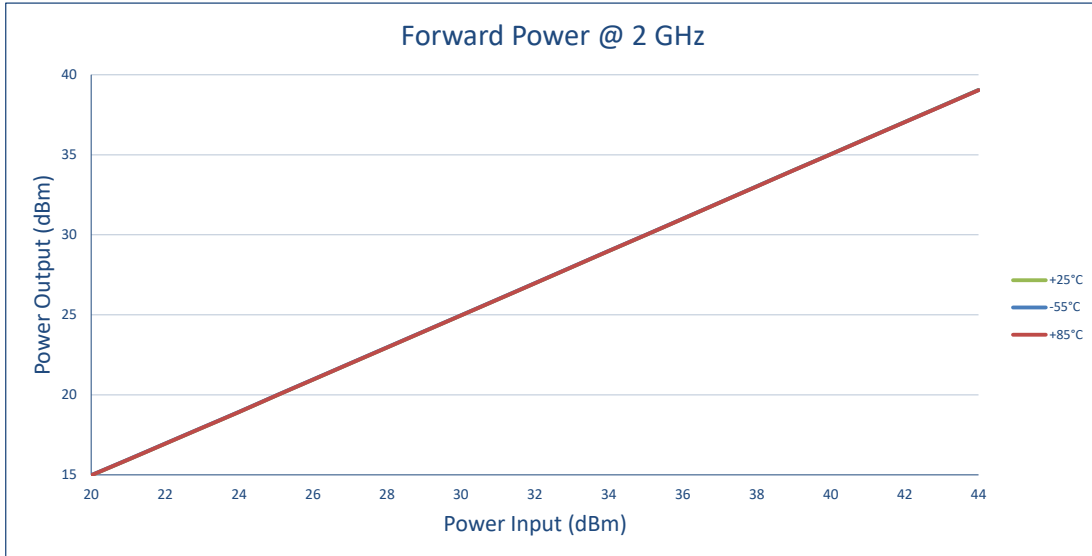
TYPICAL CHARACTERISTICS
ON
APD-3-218-SFF-30W



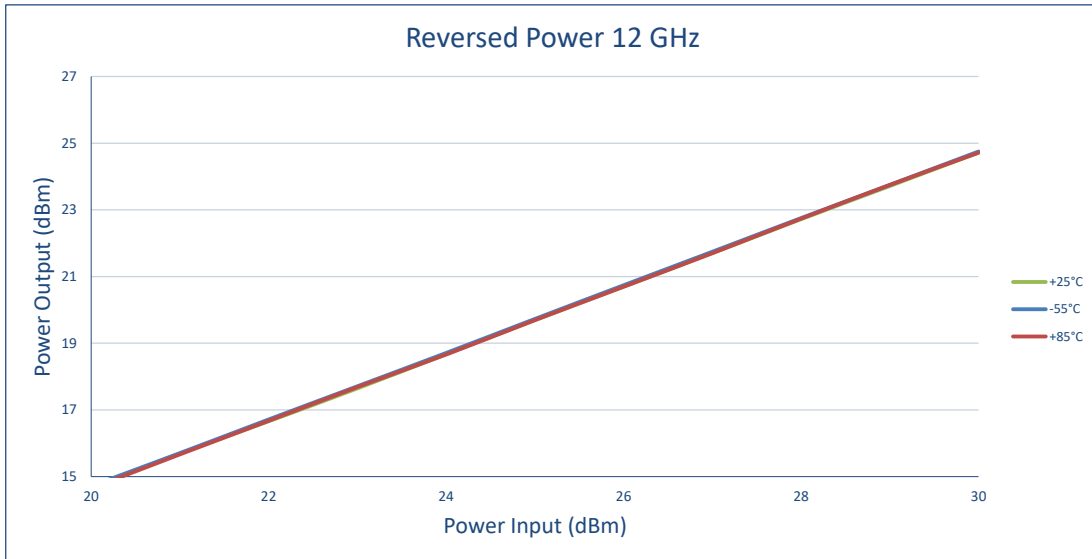
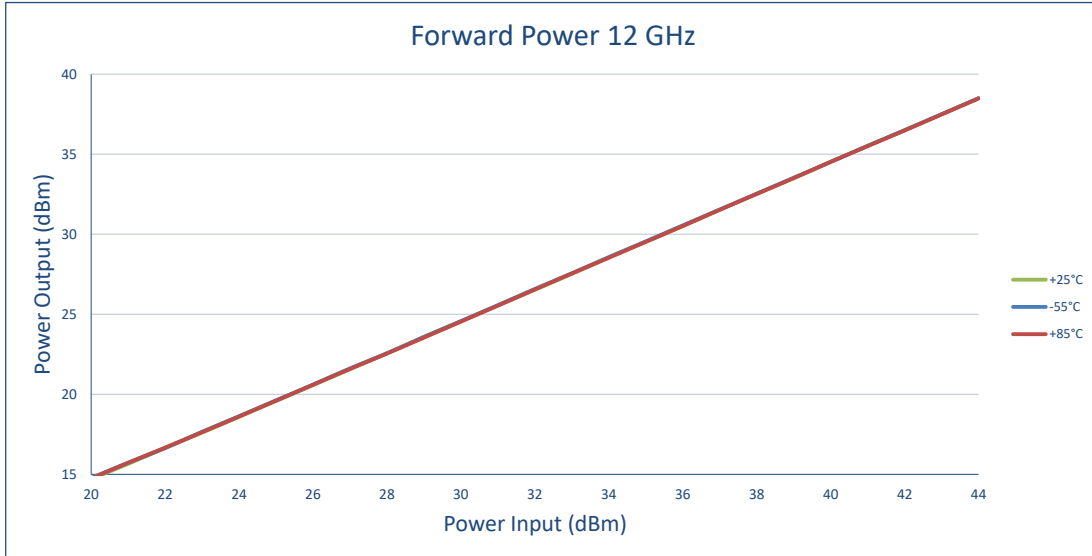
TYPICAL CHARACTERISTICS
ON
APD-3-218-SFF-30W



TYPICAL CHARACTERISTICS
ON
APD-3-218-SFF-30W



TYPICAL CHARACTERISTICS
ON
APD-3-218-SFF-30W



TYPICAL CHARACTERISTICS
ON
APD-3-218-SFF-30W

