

DESCRIPTION:

PFC model number 8CL1D6G-200-CD-SFF is a Comblaine filter with SMA female connectors in and out. All filters will be machined and silver plated to provide the highest possible Q.

SPECIFICATIONS:

- CENTER FREQUENCY: 1.6 GHz
- 3dB BANDWIDTH: 200 MHz
- INSERTION LOSS (PASSBAND): 2.0 dB MAX.
- REJECTION AT 1.00 GHz: 80 - 90 dB
- REJECTION AT 2.00 GHz: 80 - 90 dB

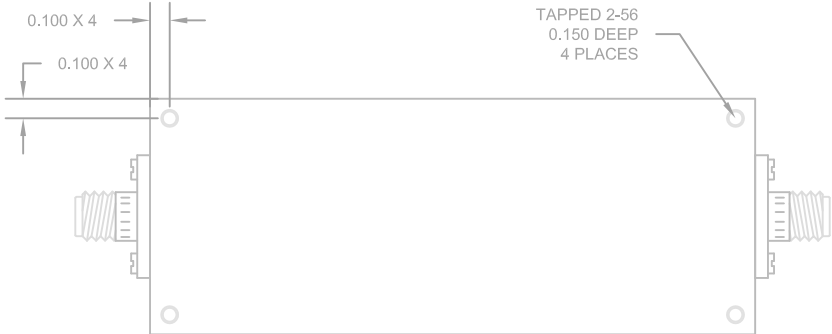
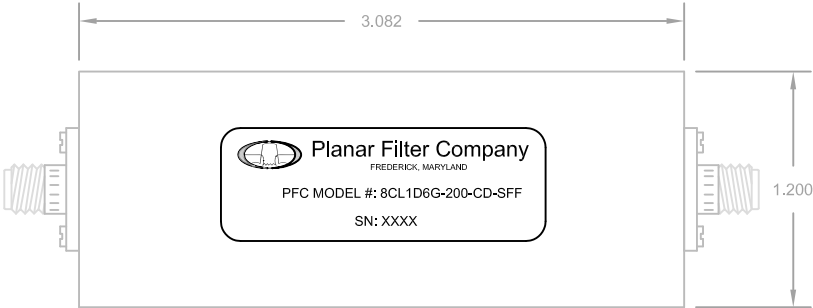
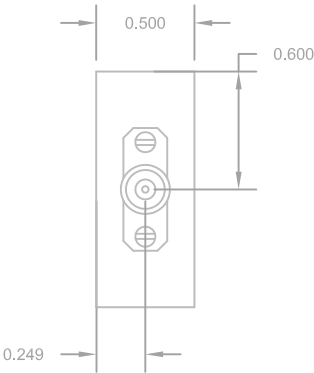
- CONNECTORS: SMA FEMALE CONNECTORS
- SIZE: 3.082" (L) x 1.20" (W) x 0.50" (H)
- WEIGHT: 1 OZ. TYP.

ENVIRONMENTAL RATINGS:


- TEMPERATURE: -55°C TO +85°C (OPERATING)
-65°C TO +125°C (STORAGE)
- HUMIDITY: MIL-STD-202F, METHOD 103B COND. B
- SHOCK: MIL-STD-202F, METHOD 213B COND. B
- VIBRATION: MIL-STD-202F, METHOD 204D COND. B
- ALTITUDE: MIL-STD-202F, METHOD 105C COND. B
- SALT FOG: MIL-STD-202F, METHOD 107D COND. A
- FUNGUS: MIL-STD-810C, METHOD 508.2
- TEMPERATURE CYCLE: MIL-STD-202F, METHOD 107

NOTE: THE ABOVE SPECIFICATIONS ARE SUBJECT TO CHANGE OR REVISION

REVISIONS				
ZONE	REV.	DESCRIPTION	DATE	APPROVED
	—	ORIGINAL RELEASE	6/11/02	
	A	Change packaging	7/18/02	



ALL DIMENSIONS ARE IN INCHES
TOLERANCES:
X.XX ±0.010
X.XXX ±0.005

PART NO. 155-1419		 Planar Filter Company 7311G Grove Road, Fredrick, Maryland		
APPROVALS		DATE	TITLE	
DRAWN <i>D. JACOB</i>		6/11/02	OUTLINE DRAWING 8CL1D6G-200-CD-SFF	
CHECKED				
ISSUED			SIZE A	FSCM NO. 1QJW0
			DWG NO. 155-1419	REV. A
			SCALE N/A	SHEET 1 OF 1