

DESCRIPTION:

PMI MODEL NUMBER P3T-0R5G4G-60-T-SFF IS A SINGLE POLE, THREE THROW NON-REFLECTIVE SWITCH DESIGNED TO OPERATE OVER THE 0.5GHZ TO 4.0GHZ FREQUENCY RANGE. THIS MODEL IS DESIGNED TO MAINTAIN LOW INSERTION LOSS, HIGH ISOLATION, AND FAST SWITCHING SPEED. THIS MODEL OFFERS LOW VIDEO TRANSIENT PERFORMANCE OF 50MV MAXIMUM.

SPECIFICATIONS:

- FREQUENCY: _____ 0.5 GHz TO 4.0 GHz
- INSERTION LOSS (0.6 – 2.5GHz): _____ 2.5dB MAXIMUM
- INSERTION LOSS (0.5 – 4GHz): _____ 3.0dB MAXIMUM
- ISOLATION: _____ 60dB MINIMUM
- VSWR: _____ 2.0:1 MAXIMUM
- SPEED: _____ ON/OFF – 50ns MAXIMUM
RISE/FALL – 15ns MAXIMUM
- POWER INPUT (OPERATING): _____ +10dBm CW MAXIMUM
- VIDEO LEAKAGE: _____ 50mV @ 350MHZ BW MAXIMUM (1)
- CONTROL: _____ TTL LOGIC – "1" = "LOW LOSS"
TTL LOGIC – "0" = "ISOLATION"
PINS E1, E2, and E3 ARE PULLED LOW "0"
- POWER SUPPLY: _____ +5V @ 150 mA NOMINAL
-12V @ 80 mA NOMINAL
- RF CONNECTORS: _____ SMA FEMALE CONNECTORS
- DC CONNECTORS: _____ SOLDER PINS
- SEALING: _____ HERMETIC
- FINISH: _____ GRAY EPOXY POLIMIDE COATING IAW MIL-C-22750,
TYPE I OVER EPOXY POLIMIDE PRIMER
IAW MIL-P-23377, TYPE I, CLASS 1 OR 3.

- (1) After 50 nsec no video transient will be present
- (2) – Video filter is required on input and output ports.

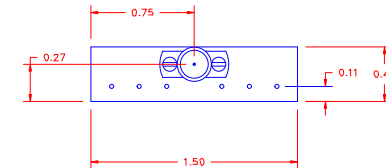
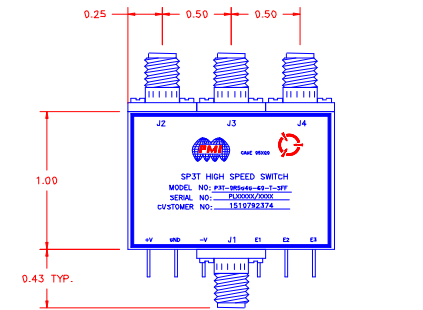
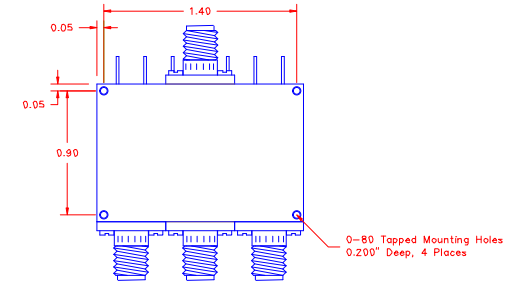
ENVIRONMENTAL RATINGS:

- TEMPERATURE: _____ -45°C TO +90°C (OPERATING)
-54°C TO +125°C (STORAGE)
- HUMIDITY: _____ MIL-STD-202F, METHOD 103B COND. B
- SHOCK: _____ MIL-STD-202F, METHOD 213B COND. C
- VIBRATION: _____ MIL-STD-202F, METHOD 204D COND. B
- SALT FOG: _____ MIL-STD-202F, METHOD 101D+EST COND. B
- FUNGUS: _____ MIL-STD-810F, METHOD 508.5

Note: Environmental testing and ESS will be met, but actual testing is not done by PMI
Actual screening is available for an additional charge.

ALL DIMENSIONS ARE IN INCHES
TOLERANCES:
X.XX ±0.020
X.XXX ±0.010

REVISIONS				
ZONE	REV.	DESCRIPTION	DATE	APPROVED
	A1	ORIGINAL RELEASE	6/8/10	
	B1	MOUNTING HOLE 0.200 DEEP	9/9/10	
	C1	SPEC CHANGES	12/21/10	
	C2	ECN # 14-0174	11/7/14	



PMI CONFIDENTIAL AND PROPRIETARY

PLANAR MONOLITHICS INDUSTRIES, INC.
7311-F GROVE ROAD
FREDERICK, MARYLAND 21704 USA
TEL: 301-662-5019 FAX: 301-662-1731
WEBSITE: www.pmi-rf.com
E-MAIL: sales@pmi-rf.com
ISO 9001 CERTIFIED



APPROVALS		DATE	TITLE		
DRAWN <i>KM</i>		6/8/10	PRODUCT FEATURE P3T-0R5G4G-60-T-SFF		
CHECKED			SIZE A	FSCM NO. 05XQ0	DWG NO. 27013302-C
ISSUED			SCALE N:S		REV. C2
					SHEET 1 OF 1

NOTE: THE ABOVE SPECIFICATIONS ARE SUBJECT TO CHANGE OR REVISION