

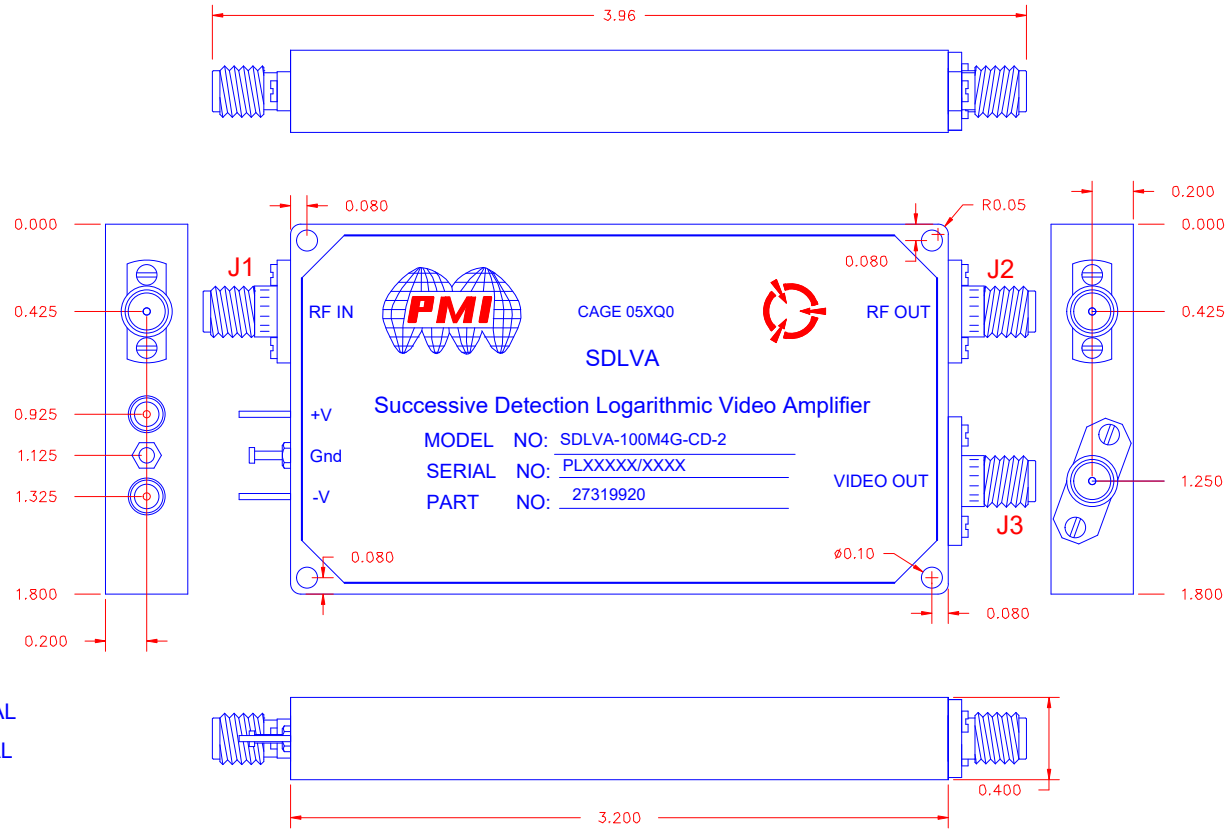
DESCRIPTION:

PMI MODEL NUMBER SDLVA-100M4G-CD-2 IS A SDLVA (SUCCESSIVE DETECTION LOGARITHMIC VIDEO AMPLIFIER) DESIGNED TO OPERATE OVER THE 100 MHz TO 4 GHz FREQUENCY RANGE. THIS MODEL IS DESIGNED FOR ULTRA HIGH SPEED APPLICATIONS WHILE MAINTAINING FLATNESS AND ACCURACY.

REVISIONS				
ZONE	REV.	DESCRIPTION	DATE	APPROVED
	A	ORIGINAL RELEASE	7/12/13	
	B1	ECN # 17-0128	6/9/17	
	C1	ECN # 25-0261	09/09/25	

SPECIFICATIONS:

- FREQUENCY: 100 MHz TO 4.0 GHz
- RF GAIN (SMALL SIGNAL) 55 dB TYP
- VIDEO FLATNESS OVER FREQUENCY: ± 50 mV MAX
- TSS: -73 dB TYP, -71 dB MAX
- VSWR: 2.0:1
- PSAT: + 13 dBm TYP
- HARMONICS(J2): 15 dBc MIN (-70 to 0 dBm J1 Input) (EXCLUDING ODD HARMONICS)
- POWER INPUT: +17 dBm CW MAX
- LOG SLOPE: 25 mV/dB TYP. 50 Ω LOAD
- LOG RANGE: -70 to 0 dBm
- LOG LINEARITY: ±2.5 dB (-40°C - +75°C)
- DC OFFSET: 50 ± 50 mV
- RISE TIME: 30 ns (MAX)
- FALL TIME: 50 ns (TYP)
- RECOVERY TIME: 500 ns (MAX)
- POWER SUPPLY: +15 V or +12 V @ 350 mA NOMINAL
-15 V or -12 V @ 180 mA NOMINAL
- SEALING: HERMETIC
- CONNECTORS: SMA FEMALE CONNECTORS
- FINISH: GRAY EPOXY POLIMIDE COATING IAW MIL-C-22750, TYPE I OVER EPOXY POLIMIDE PRIMER IAW MIL-DTL-53022E TYPE IV, LEAD FREE CHROMATE.
- MOUNTING SURFACE: CHEMICAL CONVERSION COATING - MIL-C-5541, CLASS 1A



PMI CONFIDENTIAL & PROPRIETARY

PLANAR MONOLITHICS INDUSTRIES, INC.

7311-F GROVE ROAD
 FREDERICK, MARYLAND 21704 USA
 TEL: 301-662-5019 FAX: 301-662-1731
 WEBSITE: www.pmi-rf.com
 E-MAIL: sales@pmi-rf.com
 ISO 9001 CERTIFIED



ENVIRONMENTAL RATINGS:

- TEMPERATURE: -40°C TO +75°C (OPERATING)
-65°C TO +125°C (STORAGE)
- HUMIDITY: MIL-STD-202F, METHOD 103B COND. B
- SHOCK: MIL-STD-202F, METHOD 213B COND. B
- VIBRATION: MIL-STD-202F, METHOD 204D COND. B
- ALTITUDE: MIL-STD-202F, METHOD 105C COND. B
- SALT FOG: MIL-STD-202F, METHOD 107D COND. A
- FUNGUS: MIL-STD-810C, METHOD 508.2
- TEMPERATURE CYCLE: MIL-STD-202F, METHOD 107

ALL DIMENSIONS ARE IN INCHES
 TOLERANCES:
 X.XX ±0.020
 X.XXX ±0.010

APPROVALS		DATE	TITLE		
DRAWN <i>KM</i>		1/17/13	PRODUCT FEATURE		
CHECKED <i>JM</i>			SDLVA-100M4G-CD-2		
ISSUED			SIZE	FSCM NO.	DWG NO.
			A	05XQ0	27019922
			SCALE	N:S	SHEET 1 OF 1
					REV. C1

NOTE: THE ABOVE SPECIFICATIONS ARE SUBJECT TO CHANGE OR REVISION