

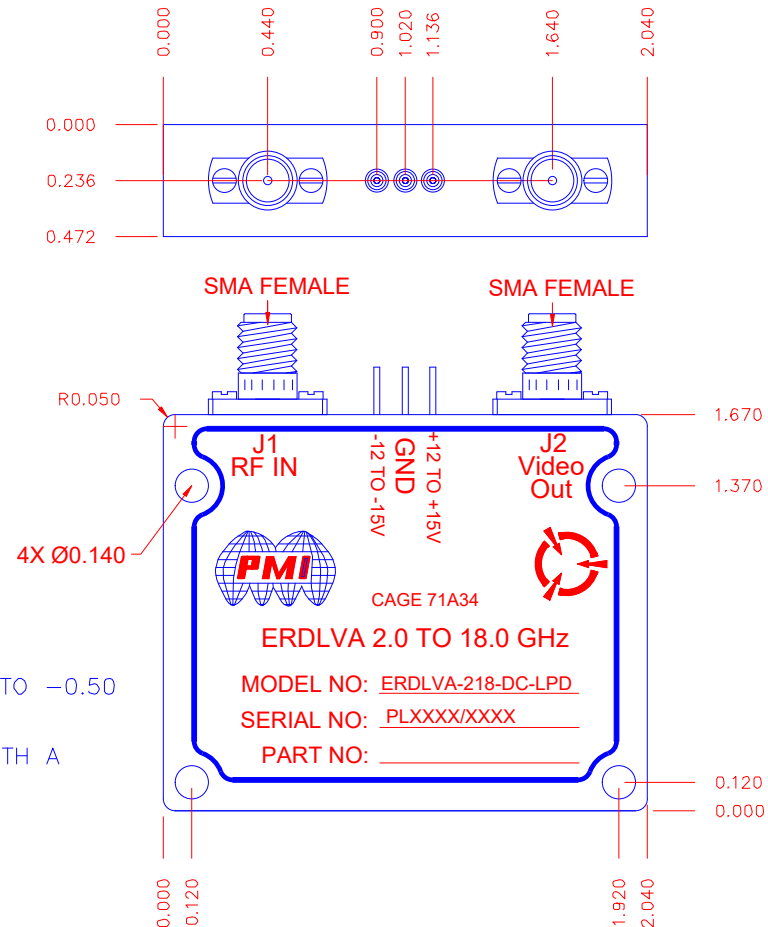
DESCRIPTION

PMI MODEL ERDLVA-218-DC-LPD IS AN EXTENDED DYNAMIC RANGE DLVA DESIGNED TO OPERATE OVER THE 2.0 TO 18.0 GHz FREQUENCY RANGE. IT EMPLOYS PLANAR DIODE DETECTORS AND INTEGRATED VIDEO CIRCUITRY FOR HIGH SPEED PERFORMANCE AND OUTSTANDING RELIABILITY. IT IS OF SUPERIOR CONSTRUCTION USING STATE OF THE ART MIC/MMIC TECHNOLOGY.

REVISIONS				
ZONE	REV.	DESCRIPTION	DATE	APPROVED
	1	ORIGINAL RELEASE	4/24/14	
	A1	ECN # 14-0203	12/10/14	
	B1	ECN # 25-0289	10/27/25	

SPECIFICATIONS

- FREQUENCY RANGE ——— 2.0 GHz TO 18.0 GHz
- LOGGING RANGE ——— -60 TO +4 dBm
- TSS ——— -64 dBm MAX
- LOGGING SLOPE ——— +85mV/dB
- LOGGING LINEARITY ——— ±0.5dB TYPICAL
±1.0dB MAX
- FLATNESS ——— ±1.5dB
- OUTPUT STABILY ——— ±1.0dB
- PULSE WIDTH RANGE ——— 50nsec TO CW
- INPUT VSWR (50 OHMS) ——— 3.0:1 MAX
- VIDEO LOAD IMPEDANCE ——— 75 OHMS
- VIDEO RISE TIME ——— 20 nsec
- RECOVERY TIME ——— 500 nsec
- DC POWER ——— +12 to +15 VDC /190 mA MAX
-12 to -15 VDC /100 mA MAX
- BASELINE NOISE (VOS) ——— 0 VDC WITH A TOLERANCE OF +150 mVDC MAX TO -0.50 mVDC AT THE DLVA OUTPUT
- VOLTAGE OUTPUT ——— 1200 mVDC WITH A TOLERANCE OF ± 50 mV WITH A
-55 dBm @ 10 GHz INPUT



ENVIRONMENTAL RATINGS:

- TEMPERATURE: ——— -40°C TO +85°C (OPERATING)
-57°C TO +85°C (STORAGE)

NOTE: THE ABOVE SPECIFICATIONS ARE SUBJECT TO CHANGE OR REVISION

- NOTES: (UNLESS OTHERWISE SPECIFIED)
1. FINISH - ELECTROLESS NICKEL PLATE
.0005 TO .0007 THK PER
AMS 2404.
 2. MARKING: APPROX AS SHOWN PER
MIL-STD-130.

ALL DIMENSIONS ARE IN INCHES
TOLERANCES:
X.XX ±0.010
X.XXX ±0.005

PMI CONFIDENTIAL AND PROPRIETARY

PLANAR MONOLITHICS INDUSTRIES, INC.

4921 ROBERT MATHEWS PARKWAY, SUITE 1
EL DORADO HILLS, CA 95762
TEL: 916-542-1401 FAX: 916-265-2597
WEBSITE: www.pmi-rf.com
E-MAIL: sales@pmi-rf.com



ISO 9001 CERTIFIED

APPROVALS		DATE	TITLE			REV.
DRAWN JGS		4/24/14	PRODUCT FEATURE ERDLVA-218-DC-LPD 2.0 - 18.0 GHz DLVA			B1
CHECKED			SIZE A	FSCM NO. 71A34	DWG NO. 27022821	
ISSUED			SCALE N:S		SHEET 1 OF 1	