

DESCRIPTION

PMI MODEL NUMBER: P16T-100M20G-60-T-512-SFF-DEC IS A SINGLE POLE, SIXTEEN THROW ABSORBPTIVE PIN DIODE SWITCH THAT OPERATES FROM 0.1 TO 20 GHz FREQUENCY RANGE. THIS MODEL HAS A TYPICAL INSERTION LOSS OF 8.5dB AND 60dB OF ISOLATION. IT OPERATES AT 20dBm CW AND IS CONTROLLED WITH 4-BIT DECODED TTL LOGIC.

SPECIFICATIONS

- FREQUENCY RANGE: 0.1 TO 20GHz
- INSERTION LOSS: 8.5dB TYP
- ISOLATION: 60dB TYP
- VSWR – INPUT/OUTPUT: 2.0:1 Typ., 2.5:1 Max.
- VSWR – OUTPUT/OFF: 2.0:1 Typ., 2.5:1 Max.
- SWITCHING SPEED:
 - RISE/FALL: 50ns TYP / 10ns TYP
 - DELAY ON/OFF: 150ns MAX
- INPUT POWER: +20dBm CW
- SURVIVAL POWER: 1 WATT CW, 10 WATTS PEAK, 1us
- CONTROL: 4-BIT DECODED TTL LOGIC – SEE TABLE
- CONNECTORS: SMA (F) REMOVABLE
- POWER SUPPLY: +5VDC @ 750mA MAX
-12VDC @ 200mA MAX
- SIZE: (L) 8.00" X (W) 3.00" (H) 0.65"
- FINISH: GOLD PLATED

OPTIONS:

- -IND: INDIVIDUAL CONTROL LOGIC

ENVIRONMENTAL RATINGS:

TEMPERATURE: -40°C TO +85°C (OPERATING)
-65°C TO +125°C (STORAGE)

HUMIDITY: MIL-STD-202F, METHOD 103B COND. B

SHOCK: MIL-STD-202F, METHOD 213B COND. B

VIBRATION: MIL-STD-202F, METHOD 204D COND. B

ALTITUDE: MIL-STD-202F, METHOD 105C COND. B

TEMPERATURE CYCLE: MIL-STD-202F, METHOD 107 COND. A

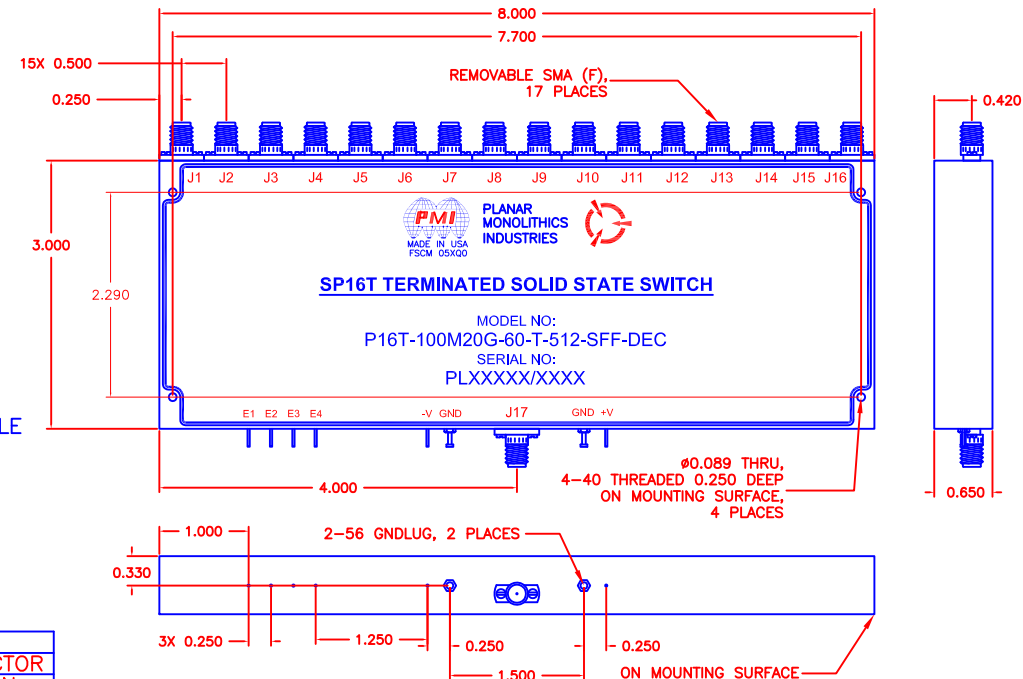
NOTE: THE ABOVE SPECIFICATIONS ARE SUBJECT TO CHANGE OR REVISION

LOGIC TABLE				
E1	E2	E3	E4	CONNECTOR
0	0	0	0	J1 ON
0	0	0	1	J2 ON
0	0	1	0	J3 ON
0	0	1	1	J4 ON
0	1	0	0	J5 ON
0	1	0	1	J6 ON
0	1	1	0	J7 ON
0	1	1	1	J8 ON
1	0	0	0	J9 ON
1	0	0	1	J10 ON
1	0	1	0	J11 ON
1	0	1	1	J12 ON
1	1	0	0	J13 ON
1	1	0	1	J14 ON
1	1	1	0	J15 ON
1	1	1	1	J16 ON

ALL DIMENSIONS ARE IN INCHES
TOLERANCES:
X.XX ±0.020
X.XXX ±0.010

REVISIONS				
ZONE	REV.	DESCRIPTION	DATE	APPROVED
	1	ORIGINAL RELEASE	09/02/14	
	A1	ECN # 15-0009	02/05/15	
	A2	ECN # 15-0165	12/4/15	

MECHANICAL OUTLINE



PMI CONFIDENTIAL AND PROPRIETARY

PLANAR MONOLITHICS INDUSTRIES, INC.

7311-F GROVE ROAD
FREDERICK, MARYLAND 21704 USA
TEL: 301-662-5019 FAX: 301-662-1731
WEBSITE: www.pmi-rf.com
E-MAIL: sales@pmi-rf.com
ISO 9001 CERTIFIED



APPROVALS		DATE	TITLE			
DRAWN <i>UR</i>		09/02/14	PRODUCT FEATURE			
CHECKED			P16T-100M20G-60-T-512-SFF-DEC			
ISSUED			SIZE	FSCM NO.	DWG NO.	REV.
			A	05XQ0	27023625	A2
			SCALE	N:S	SHEET	1 OF 1