

DESCRIPTION:

PMI MODEL P8T-20M6G-80-R-515-SFF IS A SINGLE POLE EIGHT-THROW, REFLECTIVE SWITCH MODULE WITH LOW INSERTION LOSS, HIGH ISOLATION, AND WITH INTEGRAL DECODED 3-BIT TTL DRIVER DESIGNED FOR 20 MHz TO 6 GHz OPERATION.

SPECIFICATIONS:

- FREQUENCY RANGE:..... 20 MHz TO 6 GHz
- INSERTION LOSS:..... 2.75 dB TYP, 3.25 dB MAX
- ISOLATION:..... 80 dB MIN, 100 dB TYP
- VSWR (ON/OFF):..... 2.0:1 MAX
- SWITCHING SPEED:..... 250 ns MAX
- OPERATING INPUT POWER:..... 23 dBm CW MAX
- CONTROL:..... 3-BIT DECODED TTL LOGIC (SEE TABLE 1)
- POWER SUPPLY :..... +5 VDC @ 350 mA MAX
-15 VDC @ 100 mA MAX
- SIZE:..... (L) 3.0" X (W) 1.5" X (H) 0.5"
- FINISH:..... PAINTED BLUE

TABLE 1 - LOGIC TABLE

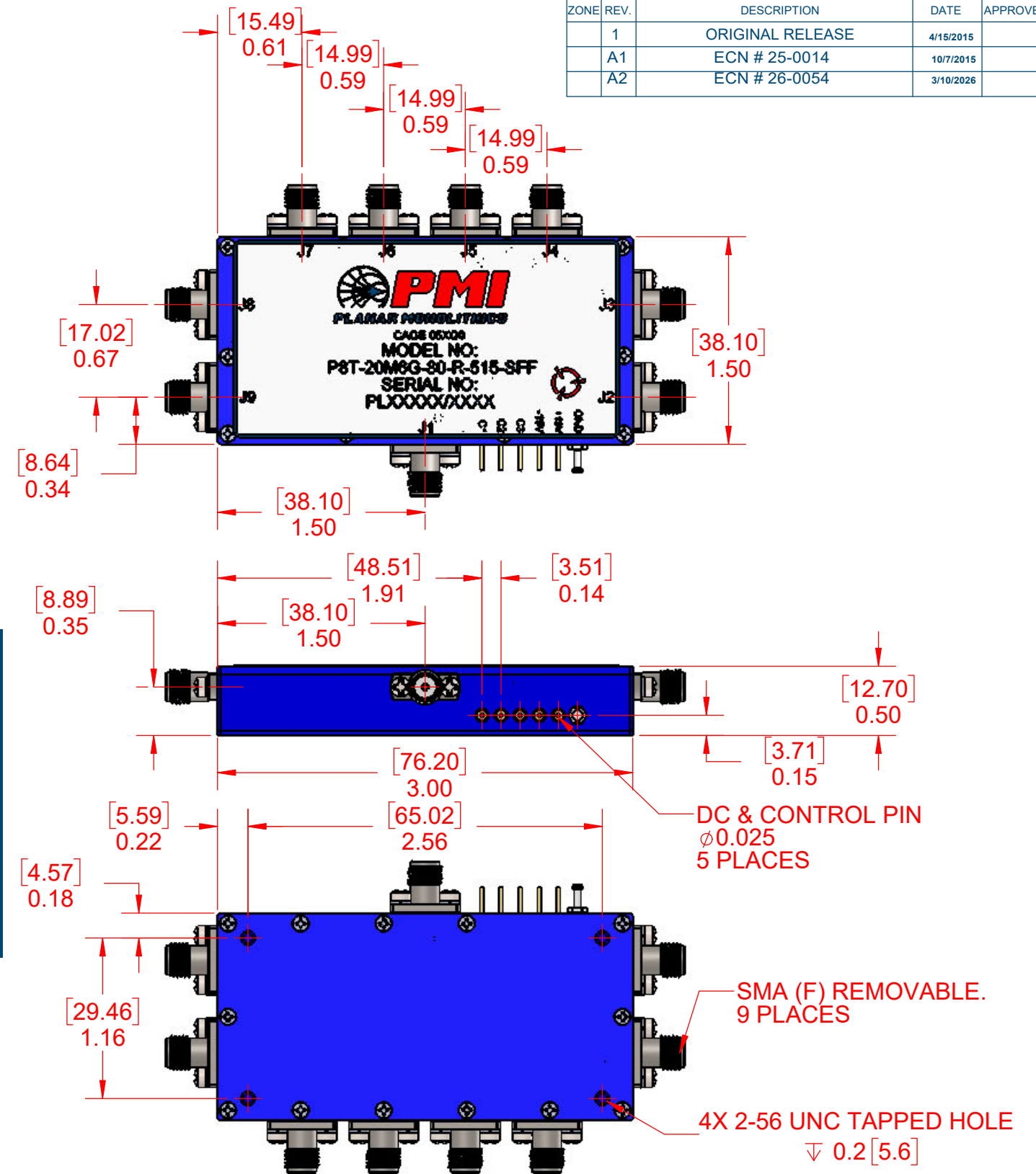
C1	C2	C3	PATH
0	0	0	J1-J2
0	0	1	J1-J3
0	1	0	J1-J4
0	1	1	J1-J5
1	0	0	J1-J6
1	0	1	J1-J7
1	1	0	J1-J8
1	1	1	J1-J9

ENVIRONMENTAL RATINGS:


- TEMPERATURE:..... -40°C TO +85°C (OPERATING)
-65°C TO +125°C (STORAGE)
- HUMIDITY:..... MIL-STD-202, METHOD 2103B COND. B
- SHOCK:..... MIL-STD-202, METHOD 213B COND. B
- VIBRATION:..... MIL-STD-202, METHOD 204D COND. B
- ALTITUDE:..... MIL-STD-202, METHOD 105C COND. B
- TEMPERATURE CYCLE:..... MIL-STD-202, METHOD 107

NOTE: SPECIFICATIONS WILL VARY OVER TEMPERATURE
NOTE: THE ABOVE SPECIFICATIONS ARE SUBJECT TO CHANGE OR REVISION

ZONE	REV.	DESCRIPTION	DATE	APPROVED
	1	ORIGINAL RELEASE	4/15/2015	
	A1	ECN # 25-0014	10/7/2015	
	A2	ECN # 26-0054	3/10/2026	



PMI CONFIDENTIAL AND PROPRIETARY

APPROVALS DRAWN KM REDRAWN ISSUED		DATE 4/15/2015	 7309-A GROVE ROAD FREDERICK, MARYLAND 21704 USA TEL: (301) 662-5019, FAX: (301) 662-1731 WEB: WWW.QUANTICPMI.COM, EMAIL: SALES@QUANTICPMI.COM ISO 9001 CERTIFIED	
TITLE OUTLINE P8T-20M6G-80-R-515-SFF			SIZE B	FSCM NO. 05XQ0
UNLESS OTHERWISE SPECIFIED DIMENSIONS ARE IN INCHES TOLERANCES ARE: FRACTIONS DECIMALS ANGLES ± .XX ± 0.02 ± .XXX ± 0.01			DWG NO. 27025042	REV. A2
SCALE 1:1			SHEET 1 OF 1	