

**DESCRIPTION:**

PMI MODEL P2T-500M10G-60-R-515-SFF-10WCW IS A SINGLE POLE DOUBLE THROW REFLECTIVE SWITCH THAT OPERATE OVER THE 0.3 TO 10 GHZ FREQUENCY RANGE. THIS SWITCH HANDLES INPUT POWER OF 10 WATTS CW AND HAS A TYPICAL SWITCHING SPEED OF 100 ns.

**SPECIFICATIONS:**

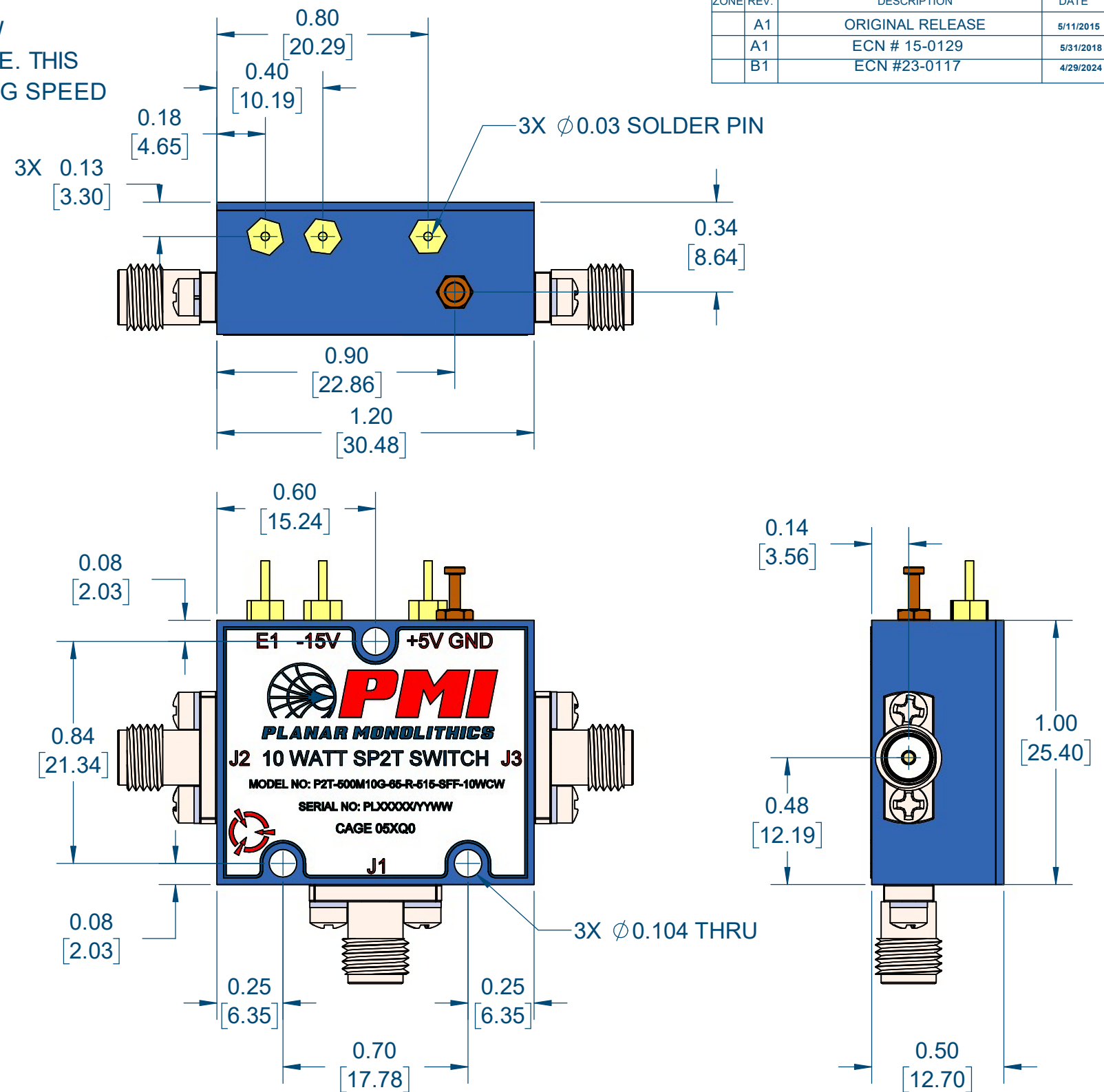
- FREQUENCY RANGE:..... 0.5 TO 10 GHz
- INSERTION LOSS:..... 2.5 dB MAX
- ISOLATION:..... 60 dB MIN
- VSWR:..... 2.0:1 MAX
- SWITCHING SPEED:..... 100 ns TYP  
(50% TTL TO 10%/90% RF)
- CONTROL:..... SINGLE CONTROL TTL TOGGLE  
LOGIC "0" = J1 - J2 ON  
LOGIC "1" = J1 - J3 ON
- RF CONNECTORS:..... SMA FEMALE
- POWER SUPPLY:..... +5V @ 100 mA MAX  
-15V @ 75 mA MAX
- RF POWER (OPERATING):..... 10 WATTS CW MAX
- FINISH:..... PAINTED BLUE

**ENVIRONMENTAL RATINGS:**

- TEMPERATURE:..... -55°C TO +85°C (OPERATING)  
-65°C TO +125°C (STORAGE)
- HUMIDTY:..... MIL-STD-202, METHOD 103 COND. B
- SHOCK:..... MIL-STD-202, METHOD 213 COND. B
- VIBRATION:..... MIL-STD-202, METHOD 204 COND. B
- ALTITUDE:..... MIL-STD-202, METHOD 105 COND. B
- TEMPERATURE CYCLE:..... MIL-STD-202, METHOD 107 COND. A

NOTE: SPECIFICATIONS WILL VARY OVER TEMPERATURE  
NOTE: THE ABOVE SPECIFICATIONS ARE SUBJECT TO CHANGE OR REVISION

ZONE	REV.	DESCRIPTION	DATE	APPROVED
	A1	ORIGINAL RELEASE	5/11/2015	
	A1	ECN # 15-0129	5/31/2018	
	B1	ECN #23-0117	4/29/2024	



PMI CONFIDENTIAL AND PROPRIETARY

APPROVALS		DATE	TITLE			
DRAWN	M. BERRY	5/11/2015	OUTLINE			
REDRAWN	E. CASTILLO	5/26/2026	P2T-500M10G-60-R-515-SFF-10WCW			
ISSUED			SIZE	FSCM NO.	DWG NO.	REV.
			B	05XQ0	27025431	B1
UNLESS OTHERWISE SPECIFIED DIMENSIONS ARE IN INCHES TOLERANCES ARE:			SCALE 2:1			
FRACTIONS	DECIMALS	ANGLES	SHEET 1 OF 1			
±	.XX ± 0.02	±				
	.XXX ± 0.01					



7309-A GROVE ROAD FREDERICK, MARYLAND 21704 USA  
TEL: (301) 662-5019, FAX: (301) 662-1731  
WEB: WWW.QUANTICPMI.COM, EMAIL: SALES@QUANTICPMI.COM  
ISO 9001 CERTIFIED