

DESCRIPTION

PMI MODEL: P2T-17G40G-60-R-55-292FF IS A REFLECTIVE SINGLE POLE, TWO THROW PIN DIODE SWITCH THAT OPERATES OVER THE 17 GHz TO 40 GHz FREQUENCY RANGE. THIS MODEL INCORPORATES A TTL COMPATIBLE DRIVER FOR EASY SYSTEM INTEGRATION.

SPECIFICATIONS

- FREQUENCY RANGE: ----- 17 GHz TO 40 GHz
- ISOLATION: ----- 60 dB MINIMUM
- INSERTION LOSS: ----- 3.5 dB MAXIMUM
- VSWR (IN/OUT): ----- 2.0:1 MAXIMUM
- SWITCHING SPEED: ----- 100 ns MAXIMUM (50% TTL TO 90% RF)
100 ns MAXIMUM (10% RF TO 90% RF)
- RF POWER CAPABILITY: ----- 100 mW CW MAXIMUM (HOT SWITCHING)
- DC SUPPLY: ----- +5 VDC @ 100 mA MAXIMUM
-5 VDC @ 75 mA MAXIMUM
- CONTROL SIGNAL: ----- J1 - J2 - ON (LGC1 "0", LGC2 "1")
J1 - J3 - ON (LGC1 "1", LGC2 "0")
- WEIGHT: ----- 60 GRAMS [2 OZ] MAXIMUM
- CONNECTORS IN/OUT: ----- 2.92mm FEMALE CONNECTORS
- CONTROL CONNECTIONS: ----- RFI SOLDER PIN
- SIZE: ----- (L) 30.48 mm [1.20"] x (W) 24.13 mm [0.95"] x (H) 11.68 mm [0.46"]
- FINISH: ----- BLUE EPOXY POLIMIDE COATING IAW MIL-C-22750, TYPE I OVER EPOXY POLIMIDE PRIMER IAW MIL-P-23377, TYPE I, CLASS 1 OR 3.

ENVIRONMENTAL RATINGS

- TEMPERATURE: ----- -54 °C TO +95 °C (OPERATING)
-65 °C TO +125 °C (STORAGE)
- HUMIDITY: ----- MIL-STD-202, METHOD 103B COND. B
- SHOCK: ----- MIL-STD-202, METHOD 213B COND. B
- VIBRATION: ----- MIL-STD-202, METHOD 204D COND. B
- ALTITUDE: ----- MIL-STD-202, METHOD 105C COND. B
- TEMPERATURE CYCLE: ----- MIL-STD-202, METHOD 107D COND. A

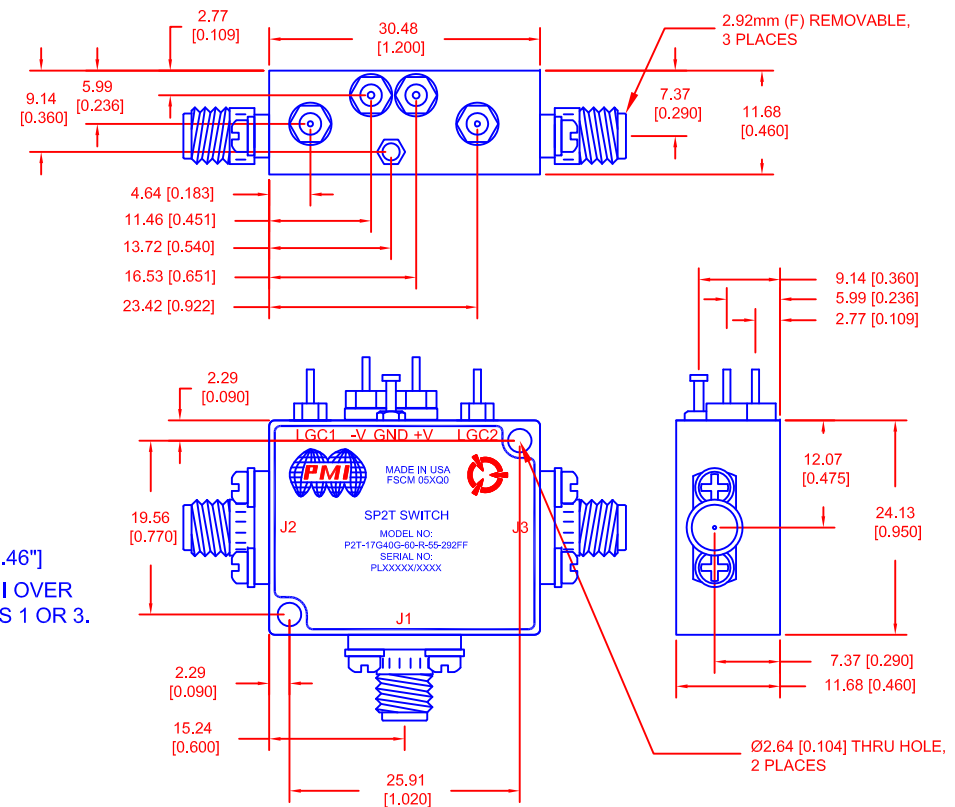
NOTE: SPECIFICATIONS WILL VARY OVER OPERATING TEMPERATURE
NOTE: THE ABOVE SPECIFICATIONS ARE SUBJECT TO CHANGE OR REVISION

PMI CONFIDENTIAL AND PROPRIETARY

ALL DIMENSIONS
ARE IN mm [INCH]
TOLERANCES:
X.XX ±0.508 [0.020]
X.XXX ±0.254 [0.010]

REVISIONS				
ZONE	REV.	DESCRIPTION	DATE	APPROVED
	1	ORIGINAL RELEASE	08/21/15	
	A1	ECN # 15-0115	10/08/15	
	A2	ECN # 16-0052	02/10/16	

MECHANICAL OUTLINE



PLANAR MONOLITHICS INDUSTRIES, INC.

7311-F GROVE ROAD

FREDERICK, MARYLAND 21704 USA

TEL: (301)-662-5019, FAX: (301)-662-1731

WEB: www.pmi-rf.com, EMAIL: sales@pmi-rf.com

ISO 9001 CERTIFIED



APPROVALS		DATE	TITLE		
DRAWN <i>M. Berry</i>		02/10/16	PRODUCT FEATURE P2T-17G40G-60-R-55-292FF		
CHECKED			SIZE A	FSCM NO. 05XQ0	DWG NO. 27025882
ISSUED			SCALE N:S	SHEET 1 OF 1	REV. A2