

## DESCRIPTION

PMI MODEL P4T-1G2G-60-R-SFF IS A REFLECTIVE, HIGH SPEED, SINGLE POLE FOUR THROW SWITCH CAPABLE OF SWITCHING WITHIN 100 ns MAXIMUM. THE FREQUENCY RANGE IS 1.0 GHz TO 2.0 GHz. THIS SWITCH HAS > 60 dB ISOLATION.

## SPECIFICATIONS

- FREQUENCY RANGE: 1.0 GHz TO 2.0 GHz
- IMPEDANCE: 50 Ω
- INPUT POWER: +30dBm MAX (SURVIVAL)  
+20dBm MAX (OPERATING)
- VSWR: 1.5:1 TYP
- INSERTION LOSS: 1.0dB TYP
- ISOLATION: 60dB MIN
- SWITCHING SPEED: 100ns MAX
- DC VOLTAGE: +5VDC, 200mA TYP  
-15VDC, 75mA TYP
- CONTROL: SOLDER PIN  
TTL Logic "0" = Low Loss  
TTL Logic "1" = Isolation  
E1 Controls J1 - J2  
E2 Controls J1 - J3  
E3 Controls J1 - J4  
E4 Controls J1 - J5
- CONNECTORS IN/OUT: SMA (F)
- SIZE: (L) 1.25" X (W) 1.25" X (H) 0.4"
- FINISH: BLUE EPOXY POLIMIDE COATING IAW MIL-C-22750, TYPE I OVER EPOXY POLIMIDE PRIMER IAW MIL-P-23377, TYPE I, CLASS 1 OR 3.

## ENVIRONMENTAL RATINGS

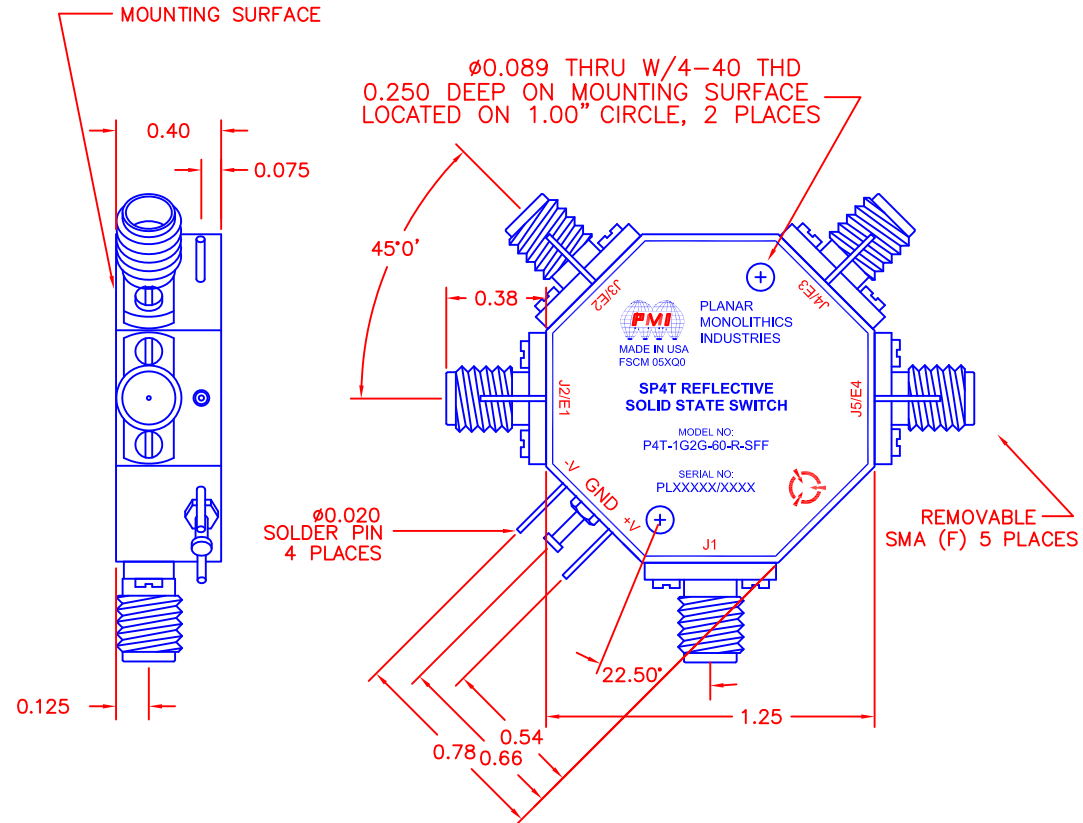
- TEMPERATURE: -55°C TO + 85°C (OPERATING)  
-65°C TO +125°C (STORAGE)
- HUMIDITY: MIL-STD-202F, METHOD 103B COND. B
- SHOCK: MIL-STD-202F, METHOD 213B COND. B
- VIBRATION: MIL-STD-202F, METHOD 204D COND. B
- ALTITUDE: MIL-STD-202F, METHOD 105C COND. B
- TEMPERATURE CYCLE: MIL-STD-202F, METHOD 107D COND. A

NOTE: SPECIFICATIONS WILL VARY OVER OPERATING TEMPERATURE  
NOTE: THE ABOVE SPECIFICATIONS ARE SUBJECT TO CHANGE OR REVISION

ALL DIMENSIONS ARE IN INCHES  
TOLERANCES:  
X.XX ±0.020  
X.XXX ±0.010

REVISIONS				
ZONE	REV.	DESCRIPTION	DATE	APPROVED
	1	ORIGINAL RELEASE	11/11/15	
	A1	ECN # 16-0165	11/10/16	

## MECHANICAL OUTLINE



PMI CONFIDENTIAL AND PROPRIETARY

## PLANAR MONOLITHICS INDUSTRIES, INC.

7311-F GROVE ROAD  
FREDERICK, MARYLAND 21704 USA  
TEL: 301-662-5019 FAX: 301-662-1731  
WEBSITE: [www.pmi-rf.com](http://www.pmi-rf.com)  
E-MAIL: [sales@pmi-rf.com](mailto:sales@pmi-rf.com)  
ISO 9001 CERTIFIED



APPROVALS		DATE	TITLE		
DRAWN: <i>B. Thomas</i>		11/11/15	PRODUCT FEATURE P4T-1G2G-60-R-SFF		
CHECKED			SIZE: A	FSCM NO.: 05XQ0	DWG NO.: 27027381
ISSUED			SCALE: N:S		REV. A1
					SHEET 1 OF 1