

DESCRIPTION

PMI MODEL NUMBER PS-500M2G-10B-SFF IS A 0.5 TO 2GHz DIGITALLY CONTROLLED ANALOG PHASE SHIFTER WITH CAPABILITY FOR PHASE SHIFTING FROM 0° TO 360°. THE UNIT CONSISTS OF AN ANALOG PHASE SHIFTER AND A DIGITAL-TO-ANALOG CONVERTER. TEN LOGIC INPUT LINES ALLOW 1024 DISCRETE VALUES OF PHASE.

SPECIFICATIONS

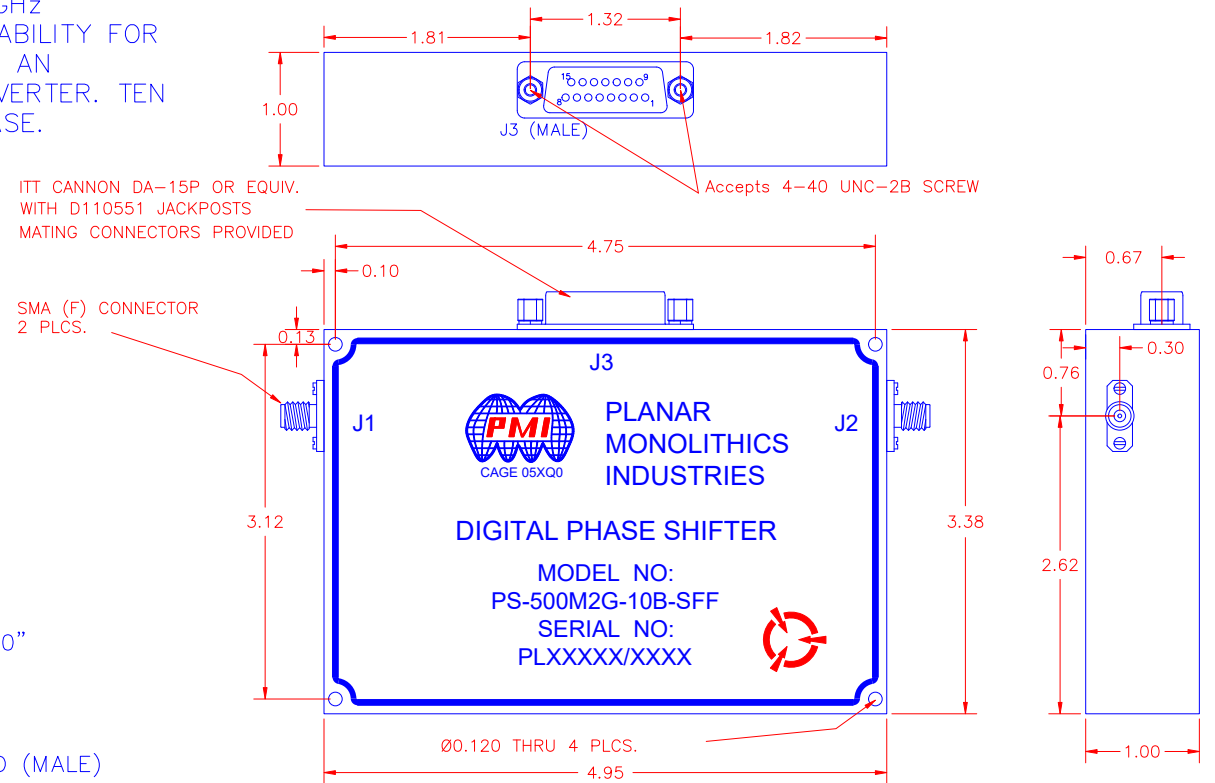
- FREQUENCY RANGE: 0.5 TO 2 GHz
- CONTROL 10 BIT TTL
- INSERTION LOSS 13dB MAX
- PHASE SHIFT 360° TYP
- AMPLITUDE ERROR ±1.0 dB MAX.
- PHASE SHIFT ERROR ±5° MAX.
- SWITCHING SPEED 500 nsec MAX.
- POWER SUPPLY
 - +V: +15V @ 250 mA TYP.
 - V: -15V @ 20 mA TYP.
- SIZE: 4.95" X 3.38" X 1.00"
- WEIGHT: 14 OZ.
- CONNECTORS(RF) SMA FEMALE
- CONNECTOR (CONTROL) 15 PIN SUBMINIATURE D (MALE)
- TEMPERATURE 0°C TO +50° C
- FINISH BLUE EPOXY POLIMIDE COATING IAW MIL-C-22750, TYPE I OVER EPOXY POLIMIDE PRIMER IAW MIL-P-23377, TYPE I, CLASS 1 OR 3.

ENVIRONMENTAL RATINGS

- TEMPERATURE: -55°C TO +85°C (OPERATING)
..... -65°C TO +125°C (STORAGE)
- HUMIDITY: MIL-STD-202F, METHOD 103B COND. B
- SHOCK: MIL-STD-202F, METHOD 213B COND. B
- VIBRATION: MIL-STD-202F, METHOD 204D COND. B
- ALTITUDE: MIL-STD-202F, METHOD 105C COND. B
- TEMPERATURE CYCLE: MIL-STD-202F, METHOD 107D COND. A

NOTE: SPECIFICATIONS WILL VARY OVER OPERATING TEMPERATURE
NOTE: THE ABOVE SPECIFICATIONS ARE SUBJECT TO CHANGE OR REVISION

| REVISIONS | | | | |
|-----------|------|-----------------|----------|----------|
| ZONE | REV. | DESCRIPTION | DATE | APPROVED |
| | 1 | INITIAL RELEASE | 12/16/15 | |
| A1 | | ECN # 17-0006 | 01/13/17 | |



| ELECTRICAL CONNECTOR PIN ASSIGNMENTS | |
|--------------------------------------|---------------|
| PIN LETTER | FUNCTION |
| 1 | 0.35 DEGREES |
| 2 | 0.7 DEGREES |
| 3 | 1.41 DEGREES |
| 4 | 2.81 DEGREES |
| 5 | 5.63 DEGREES |
| 6 | 11.25 DEGREES |
| 7 | 22.5 DEGREES |
| 8 | 45 DEGREES |
| 9 | 90 DEGREES |
| 10 | 180 DEGREES |
| 11 | NC |
| 12 | NC |
| 13 | + 15 VDC |
| 14 | - 15 VDC |
| 15 | GROUND |

ALL DIMENSIONS ARE IN INCHES
TOLERANCES:
X.XX ±0.020
X.XXX ±0.010

PMI CONFIDENTIAL AND PROPRIETARY

PLANAR MONOLITHICS INDUSTRIES, INC.

7311-F GROVE ROAD
FREDERICK, MARYLAND 21704 USA
TEL: 301-662-5019 FAX: 301-662-1731
WEBSITE: www.pmi-rf.com
E-MAIL: sales@pmi-rf.com
ISO 9001 CERTIFIED



| APPROVALS | | DATE | TITLE | | | |
|--------------------|--|---------|-------------------|----------|----------|--------|
| DRAWN <i>BFB</i> | | 2/3/11 | PRODUCT FEATURE | | | |
| MODIFIED <i>JY</i> | | 1/20/15 | PS-500M2G-10B-SFF | | | |
| ISSUED | | | SIZE | FSCM NO. | DWG NO. | REV. |
| | | | A | 05XQ0 | 27028932 | A1 |
| | | | SCALE | N:S | SHEET | 1 OF 1 |