

DESCRIPTION

PMI MODEL: P3T-9G10G-45-R-SFF IS A 9.0 TO 10.0 GHz, SP3T REFLECTIVE SWITCH CAPABLE OF SWITCHING WITHIN 100 ns MAXIMUM. THIS UNIT HAS A TYPICAL INSERTION LOSS OF 2.0 dB AND ISOLATION OF 45 dB MINIMUM WITH A VSWR OF 1.8:1.

SPECIFICATIONS

- FREQUENCY: ----- 9.0 TO 10.0 GHz
- INSERTION LOSS: ----- 2.5 dB TYPICAL
2.7 dB MAXIMUM
- ISOLATION: ----- 45 dB MINIMUM
- VSWR: ----- 1.8:1 TYPICAL
- LOGIC CONTROL: ----- SEE LOGIC TABLE BELOW
- SWITCHING SPEED: ----- 100 ns MAXIMUM
- POWER HANDLING: ----- 10 W CW MINIMUM
57 dBm PEAK @ 1 μs PULSE WIDTH, 1% DUTY CYCLE
- SUPPLY: ----- +5 V @ 85 mA
-15 V @ 75 mA
- FINISH: ----- BLUE EPOXY POLIMIDE COATING IAW
MIL-C-22750, TYPE I OVER EPOXY POLIMIDE
PRIMER IAW MIL-P-23377, TYPE I, CLASS 1 OR 3.
MOUNTING SURFACE FREE OF PAINT

LOGIC CONTROL TTL

L1	L2	L3	COMM-J1	COMM-J2	COMM-J3
TTL LO	TTL HI	TTL HI	INSERTION LOSS	ISOLATION	ISOLATION
TTL HI	TTL LO	TTL HI	ISOLATION	INSERTION LOSS	ISOLATION
TTL HI	TTL HI	TTL LO	ISOLATION	ISOLATION	INSERTION LOSS

ENVIRONMENTAL RATINGS

- TEMPERATURE: ----- -54 °C TO +95 °C (OPERATING)
-65 °C TO +125 °C (STORAGE)
- HUMIDITY: ----- MIL-STD-202, METHOD 103B COND. B MAINTAIN
RH 95±4% @ 63 °C (ALLOWED RF 85% WHEN
TEMPERATURE-DOWN TRANSITION TIME.) THE
RATE OF TEMPERATURE CHANGE: ABOVE 8
°C/HOURS
- SHOCK: ----- MIL-STD-202, METHOD 213, COND J
20G (DURING OPERATION) & 125g, 6 ms SAW
TOOTH TYPE, 3-AXIS (NO OPERATION)
- VIBRATION: ----- MIL-STD-202, METHOD 214, COND A
12G 30 MIN, X, Y, Z-AXIS (DURING OPERATION)
& 20G 30 MIN X, Y, Z-AXIS (DURING OPERATION)
- ALTITUDE: ----- MIL-STD-202, METHOD 105C, COND B
200Km (8.47e-7 hPa or 6.353e-7 torr/DURING
OPERATION)
- TEMPERATURE CYCLE: ----- MIL-STD-202, METHOD 107D COND. A

NOTE: SPECIFICATIONS WILL VARY OVER OPERATING TEMPERATURE

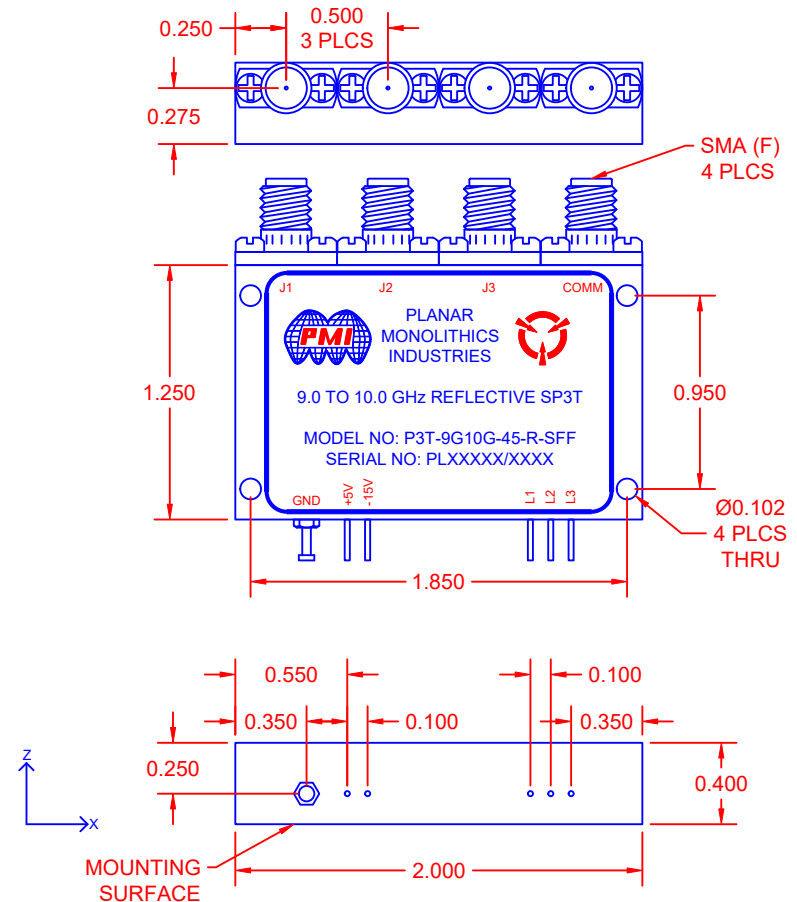
NOTE: THE ABOVE SPECIFICATIONS ARE SUBJECT TO CHANGE OR REVISION

PMI CONFIDENTIAL AND PROPRIETARY

ALL DIMENSIONS
ARE IN INCHES (mm)
TOLERANCES:
X.XX ±0.020
X.XXX ±0.010

REVISIONS		DESCRIPTION	DATE	APPROVED
ZONE	REV.			
	1	ORIGINAL RELEASE	10/17/16	
	A1	ECN # 17-0175	7/15/17	
	A2	ECN # 25-0049	2/24/25	

MECHANICAL OUTLINE



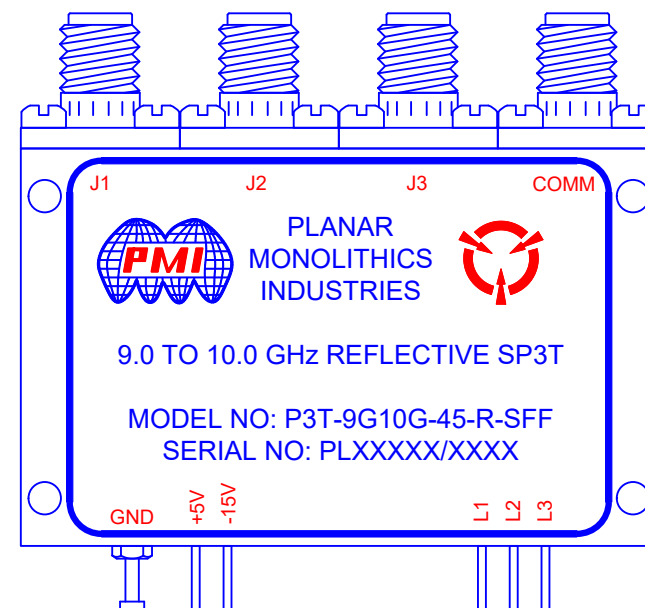
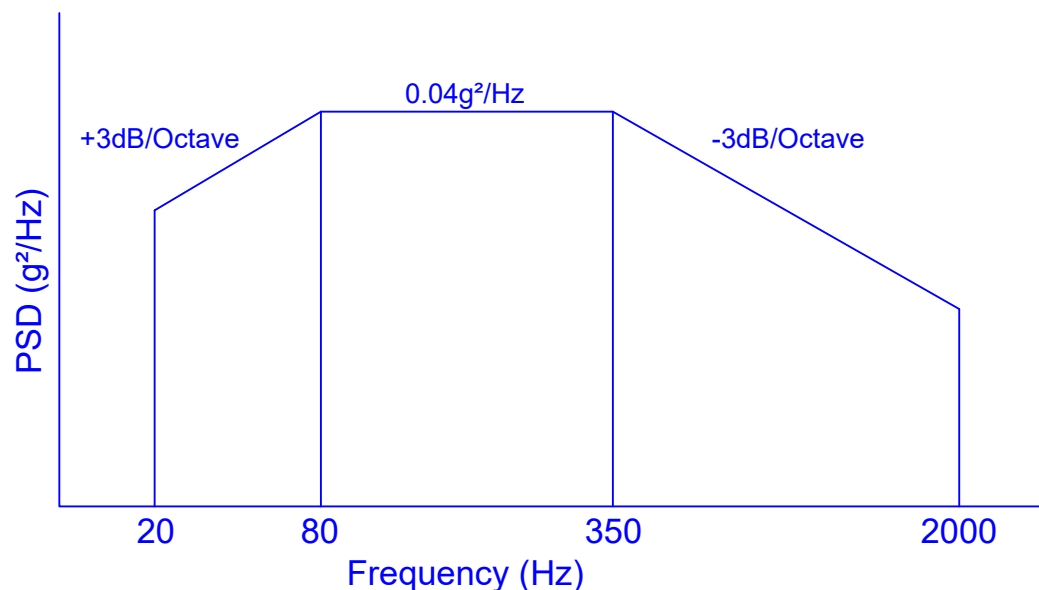
PLANAR MONOLITHICS INDUSTRIES, INC.
7311-F GROVE ROAD
FREDERICK, MARYLAND 21704 USA
TEL: (301)-662-5019, FAX: (301)-662-1731
WEB: www.pmi-rf.com, EMAIL: sales@pmi-rf.com
ISO 9001 CERTIFIED



APPROVALS		DATE	TITLE			REV.
DRAWN M. Berry		10/17/16	PRODUCT FEATURE P3T-9G10G-45-R-SFF 9.0 to 10.0 GHz, Single Pole, Three Throw Reflective Switch			A2
CHECKED			SIZE A	FSCM NO. 05XQ0	DWG NO. 27030780	
ISSUED			SCALE N:S		SHEET 1 OF 2	

VIBRATION TESTING PROFILE:

1. VIBRATION DIRECTION IS Z-AXIS
2. VIBRATION FREQUENCY IS RANDOM VIBRATION 20-2000 Hz AND EXCLUDES RESONANCE FREQUENCY OF A TEST ZIG
3. VIBRATION MAGNITUDE IS 6grms, 0.04g²/Hz ±3 dB OCTAVE FOR 10 MINUTES



PLANAR MONOLITHICS INDUSTRIES, INC.
 7311-F GROVE ROAD
 FREDERICK, MARYLAND 21704 USA
 TEL: (301)-662-5019, FAX: (301)-662-1731
 WEB: www.pmi-rf.com, EMAIL: sales@pmi-rf.com
 ISO 9001 CERTIFIED



NOTE: SPECIFICATIONS WILL VARY OVER OPERATING TEMPERATURE
 NOTE: THE ABOVE SPECIFICATIONS ARE SUBJECT TO CHANGE OR REVISION

ALL DIMENSIONS
 ARE IN INCHES (mm)
 TOLERANCES:
 X.XX ±0.020
 X.XXX ±0.010

PMI CONFIDENTIAL AND PROPRIETARY

APPROVALS		DATE	TITLE		
DRAWN M. Berry		10/17/16	PRODUCT FEATURE P3T-9G10G-45-R-SFF 9.0 to 10.0 GHz, Single Pole, Three Throw Reflective Switch		
CHECKED			SIZE A	FSCM NO. 05XQ0	DWG NO. 27030780
ISSUED			SCALE N:S		REV. A2
				SHEET	2 OF 2