

DESCRIPTION

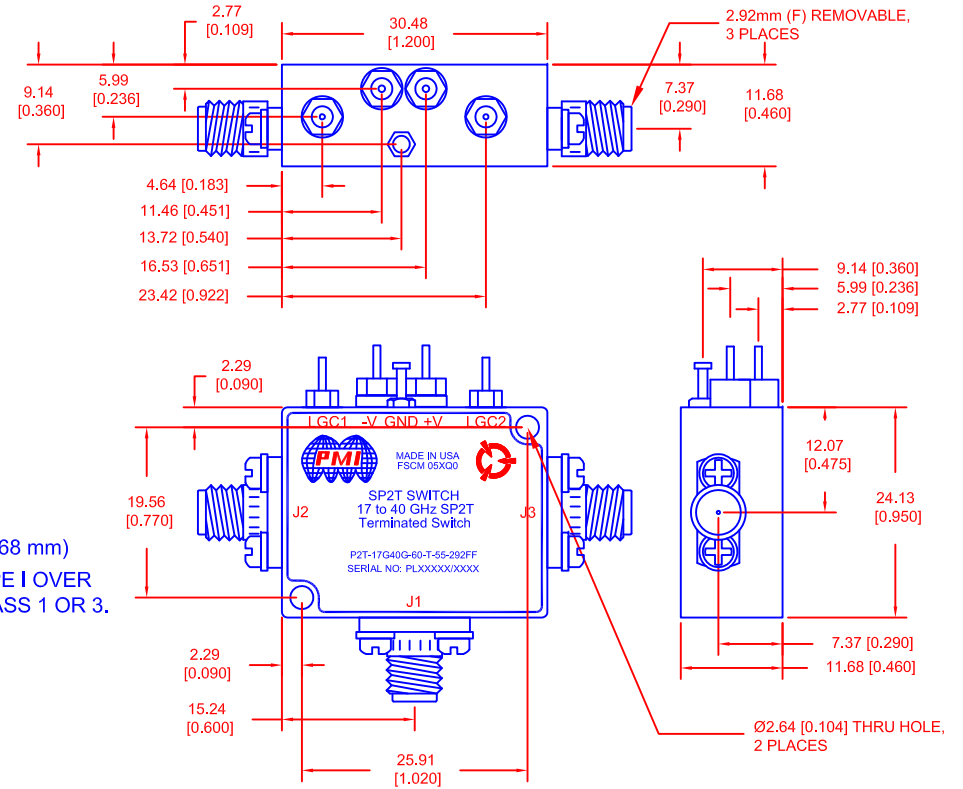
PMI MODEL: P2T-17G40G-60-T-55-292FF IS AN ABSORPTIVE SINGLE POLE, TWO THROW PIN DIODE SWITCH THAT OPERATES OVER THE 17 GHz TO 40 GHz FREQUENCY RANGE. THIS MODEL INCORPORATES A TTL COMPATIBLE DRIVER FOR EASY SYSTEM INTEGRATION.

REVISIONS				
ZONE	REV.	DESCRIPTION	DATE	APPROVED
	1	ORIGINAL RELEASE	11/11/16	
	A1	ECN # 17-0025	02/22/17	

SPECIFICATIONS

- FREQUENCY RANGE: ----- 17 GHz TO 40 GHz
- ISOLATION: ----- 60 dB MINIMUM
- INSERTION LOSS: ----- 5.5 dB MAXIMUM
- VSWR (IN/OUT): ----- 2.5:1 MAXIMUM
2.0:1 TYPICAL
- SWITCHING SPEED: ----- 100 ns MAXIMUM (50% TTL TO 90% RF)
100 ns MAXIMUM (10% RF TO 90% RF)
- RF POWER CAPABILITY: ----- 100 mW CW MAXIMUM (HOT SWITCHING)
- DC SUPPLY: ----- +5 VDC @ 200 mA MAXIMUM
-5 VDC @ 100 mA MAXIMUM
- CONTROL SIGNAL: ----- J1 - J2 - ON (LGC1 "0", LGC2 "1")
J1 - J3 - ON (LGC1 "1", LGC2 "0")
- WEIGHT: ----- 60 GRAMS [2 OZ] MAXIMUM
- CONNECTORS IN/OUT: ----- 2.92mm FEMALE CONNECTORS
- CONTROL CONNECTIONS: ----- RFI SOLDER PIN
- SIZE: ----- (L) 1.20" (30.48 mm) x (W) 0.95" (24.13 mm) x (H) 0.46" (11.68 mm)
- FINISH: ----- BLUE EPOXY POLIMIDE COATING IAW MIL-C-22750, TYPE I OVER EPOXY POLIMIDE PRIMER IAW MIL-P-23377, TYPE I, CLASS 1 OR 3.

MECHANICAL OUTLINE



ENVIRONMENTAL RATINGS

- TEMPERATURE: ----- -54 °C TO +95 °C (OPERATING)
-65 °C TO +125 °C (STORAGE)
- HUMIDITY: ----- MIL-STD-202, METHOD 103B COND. B
- SHOCK: ----- MIL-STD-202, METHOD 213B COND. B
- VIBRATION: ----- MIL-STD-202, METHOD 204D COND. B
- ALTITUDE: ----- MIL-STD-202, METHOD 105C COND. B
- TEMPERATURE CYCLE: ----- MIL-STD-202, METHOD 107D COND. A

NOTE: SPECIFICATIONS WILL VARY OVER OPERATING TEMPERATURE
NOTE: THE ABOVE SPECIFICATIONS ARE SUBJECT TO CHANGE OR REVISION

ALL DIMENSIONS ARE IN INCHES (mm)
TOLERANCES:
X.XX ±0.020
X.XXX ±0.010

PMI CONFIDENTIAL AND PROPRIETARY

PLANAR MONOLITHICS INDUSTRIES, INC.
7311-F GROVE ROAD
FREDERICK, MARYLAND 21704 USA
TEL: (301)-662-5019, FAX: (301)-662-1731
WEB: www.pmi-rf.com, EMAIL: sales@pmi-rf.com
ISO 9001 CERTIFIED



APPROVALS		DATE	TITLE		
DRAWN <i>JPU</i>		11/11/16	PRODUCT FEATURE P2T-17G40G-60-T-55-292FF 17 to 40 GHz SP2T Terminated Switch		
CHECKED			SIZE A	FSCM NO. 05XQ0	DWG NO. 27031182
ISSUED			SCALE N:S		REV. A1
					SHEET 1 OF 1