

DESCRIPTION:

PMI MODEL P2T-300M10G-65-R-515-SFF-10WCW-LV IS A SINGLE POLE TWO THROW REFLECTIVE SWITCH THAT OPERATES OVER THE 0.3 TO 10 GHz FREQUENCY RANGE. THIS SWITCH HANDLE INPUT POWER OF 10 WATTS CW AND HAS A TYPICAL SWITCHING SPEED OF 100 ns.

SPECIFICATIONS:

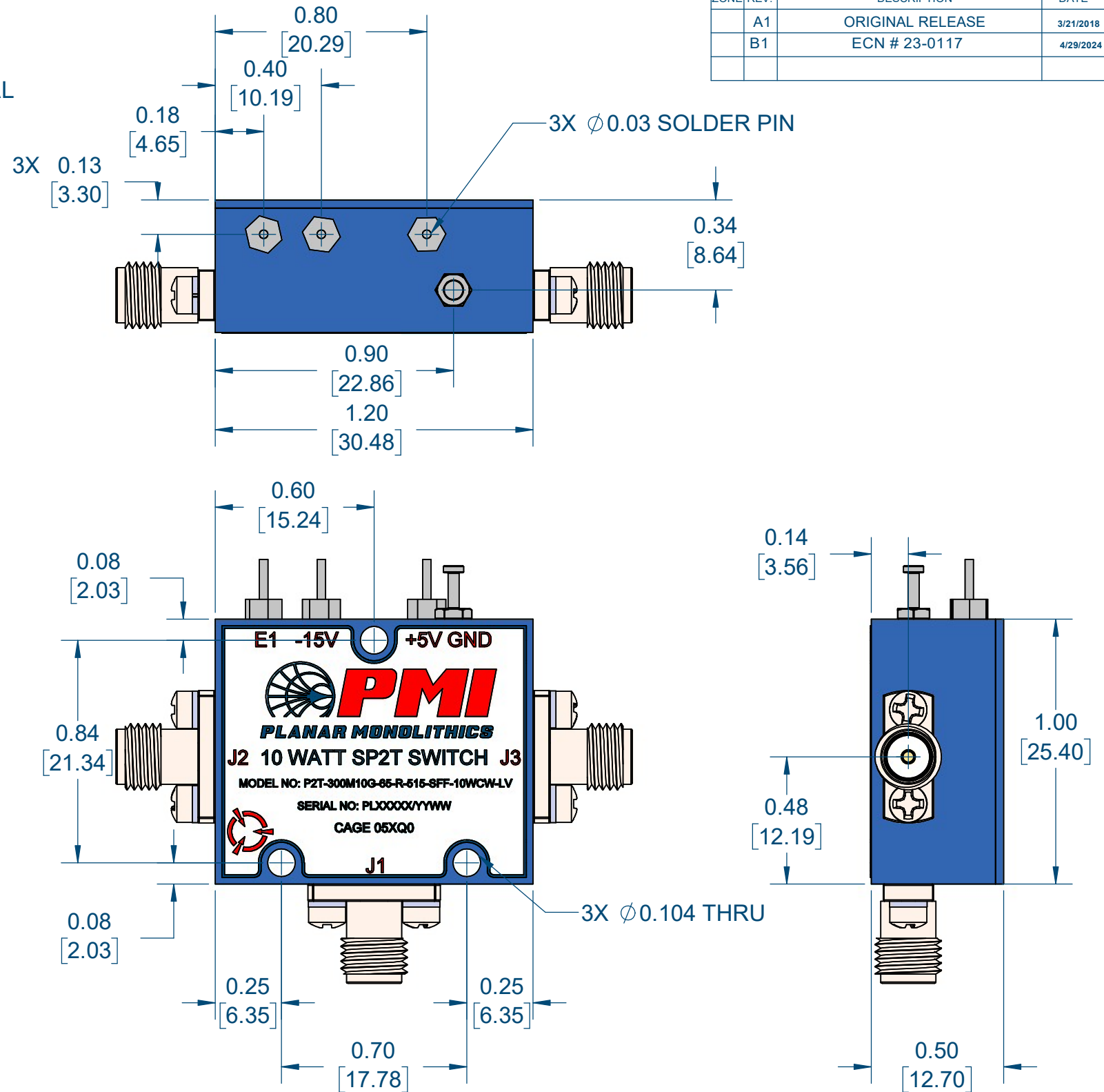
- FREQUENCY RANGE:..... 0.3 GHz TO 10.0 GHz
- INSERTION LOSS:..... 2.5 dB MAX
- ISOLATION:..... 65 dB MIN
- VSWR:..... 2.0:1 MAX
- SWITCHING SPEED:..... 100 ns TYP
(50% TTL TO 10%/90% RF)
- VIDEO TRANSIENTS:..... 0.5 Vpp TYP
- CONTROL:..... SINGLE CONTROL TTL TOGGLE
LOGIC "0" = J1-J2 ON
LOGIC "1" = J1-J3 ON
- CONNECTORS:..... SMA FEMALE
- POWER SUPPLY:..... +5 V @ 100 mA MAX
-15 V @ 75 mA MAX
- RF POWER (OPERATING):..... 10 WATTS CW MAX
- FINISH:..... PAINTED BLUE

ENVIRONMENTAL RATINGS:

- TEMPERATURE:..... -55°C TO +85°C (OPERATING)
-65°C TO +125°C (STORAGE)
- HUMIDITY:..... MIL-STD-202, METHOD 103 COND. B
- SHOCK:..... MIL-STD-202, METHOD 213 COND. B
- VIBRATION:..... MIL-STD-202, METHOD 204 COND. B
- ALTITUDE:..... MIL-STD-202, METHOD 105 COND. B
- TEMPERATURE CYCLE:..... MIL-STD-202, METHOD 107 COND. A

NOTE: SPECIFICATIONS WILL VARY OVER TEMPERATURE
NOTE: THE ABOVE SPECIFICATIONS ARE SUBJECT TO CHANGE OR REVISION

ZONE	REV.	DESCRIPTION	DATE	APPROVED
	A1	ORIGINAL RELEASE	3/21/2018	
	B1	ECN # 23-0117	4/29/2024	



PMI CONFIDENTIAL AND PROPRIETARY

APPROVALS DRAWN LPH REDRAWN E. CASTILLO ISSUED		DATE 3/21/2018 5/26/2026	TITLE OUTLINE P2T-300M10G-65-R-515-SFF-10WCW-LV		REV. B1
UNLESS OTHERWISE SPECIFIED DIMENSIONS ARE IN INCHES TOLERANCES ARE: FRACTIONS .XX ± 0.02 DECIMALS .XXX ± 0.01 ANGLES ±	SIZE B	FSCM NO. 05XQ0	DWG NO. 27035020	SCALE 2:1	SHEET 1 OF 1

