

## DESCRIPTION

PMI MODEL P4T-2G18G-70-T-SFF IS AN ABSORPTIVE, HIGH SPEED, SINGLE POLE FOUR THROW SWITCH CAPABLE OF SWITCHING WITHIN 100 ns MAXIMUM. THE FREQUENCY RANGE IS 2.0 GHz TO 18.0 GHz. THIS SWITCH HAS > 70 dB ISOLATION.

## SPECIFICATIONS

- FREQUENCY RANGE: \_\_\_\_\_ 2.0 GHz TO 18.0 GHz
- IMPEDANCE: \_\_\_\_\_ 50 Ω
- INPUT POWER: \_\_\_\_\_ +30dBm MAX (SURVIVAL)  
+20dBm MAX (OPERATING)
- VSWR: \_\_\_\_\_ 2.0:1 MAX
- INSERTION LOSS: \_\_\_\_\_ 3.5dB MAX
- ISOLATION: \_\_\_\_\_ 70dB MIN
- SWITCHING SPEED: \_\_\_\_\_ 100ns MAX
- DC VOLTAGE: \_\_\_\_\_ +5VDC, 200mA TYP.  
-15VDC, 100mA TYP.
- CONTROL: \_\_\_\_\_ SOLDER PIN  
TTL Logic "0" = Low Loss  
TTL Logic "1" = Isolation  
E1 Controls J1 - J2  
E2 Controls J1 - J3  
E3 Controls J1 - J4  
E4 Controls J1 - J5
- CONNECTORS IN/OUT: \_\_\_\_\_ SMA (F)
- SIZE: \_\_\_\_\_ (L) 1.25" X (W) 1.25" X (H) 0.4"
- FINISH: \_\_\_\_\_ PAINTED BLUE

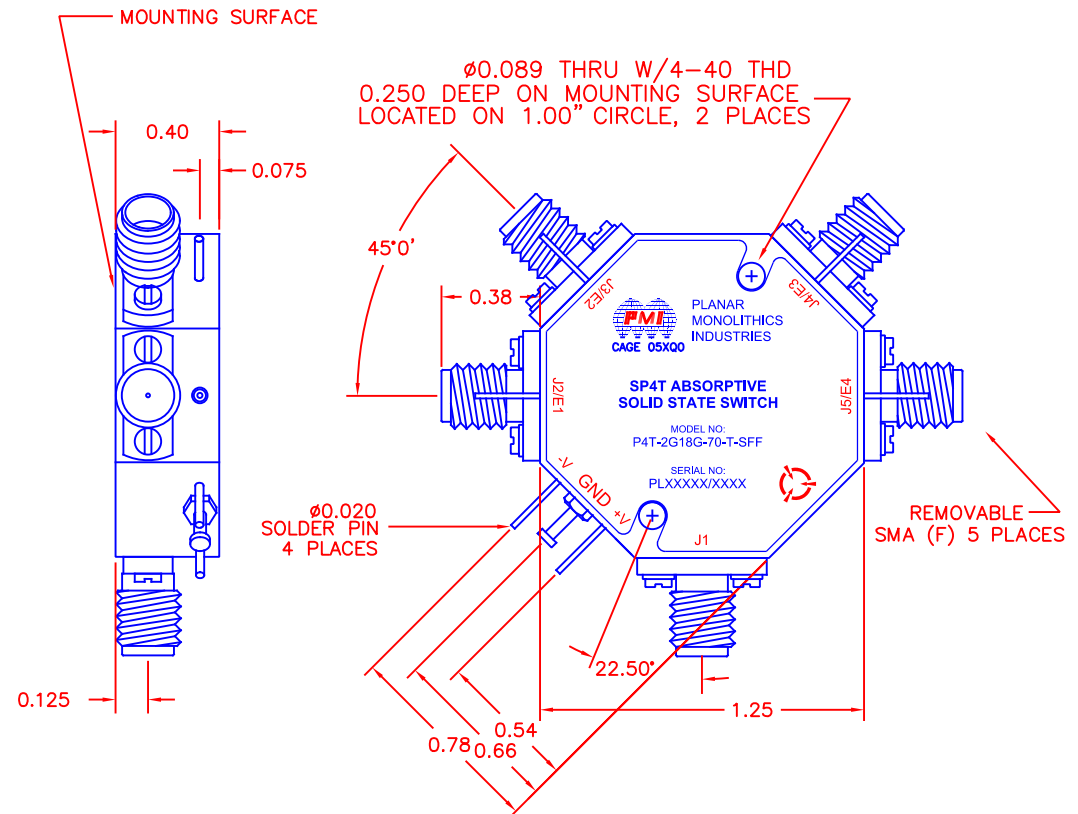
## ENVIRONMENTAL RATINGS

- TEMPERATURE: \_\_\_\_\_ -55°C TO + 85°C (OPERATING)  
-65°C TO +125°C (STORAGE)
- HUMIDITY: \_\_\_\_\_ MIL-STD-202F, METHOD 103B COND. B
- SHOCK: \_\_\_\_\_ MIL-STD-202F, METHOD 213B COND. B
- VIBRATION: \_\_\_\_\_ MIL-STD-202F, METHOD 204D COND. B
- ALTITUDE: \_\_\_\_\_ MIL-STD-202F, METHOD 105C COND. B
- TEMPERATURE CYCLE: \_\_\_\_\_ MIL-STD-202F, METHOD 107D COND. A

NOTE: SPECIFICATIONS WILL VARY OVER OPERATING TEMPERATURE  
NOTE: THE ABOVE SPECIFICATIONS ARE SUBJECT TO CHANGE OR REVISION

REVISIONS				
ZONE	REV.	DESCRIPTION	DATE	APPROVED
	A1	ORIGINAL RELEASE	7/3/18	

## MECHANICAL OUTLINE



PMI CONFIDENTIAL AND PROPRIETARY

## PLANAR MONOLITHICS INDUSTRIES, INC.

7311-F GROVE ROAD  
FREDERICK, MARYLAND 21704 USA  
TEL: 301-662-5019 FAX: 301-662-1731  
WEBSITE: [www.pmi-rf.com](http://www.pmi-rf.com)  
E-MAIL: [sales@pmi-rf.com](mailto:sales@pmi-rf.com)  
ISO 9001 CERTIFIED



ALL DIMENSIONS ARE IN INCHES  
TOLERANCES:  
X.XX ±0.020  
X.XXX ±0.010

APPROVALS		DATE	TITLE			
DRAWN: B.Thomas		11/11/15	PRODUCT FEATURE P4T-2G18G-70-T-SFF			
REDRAWN: SPU		7/3/2018	SIZE: A	FSCM NO.: 05XQ0	DWG NO.: 27035280	REV.: A1
ISSUED:			SCALE: N:S	SHEET: 1 OF 1		