

DESCRIPTION

PMI MODEL NO. P1T-1218-55-T-SFF IS A SINGLE POLE, SINGLE THROW, J0 ABSORPTIVE AND J1 REFLECTIVE SWITCH OPERATING OVER THE FREQUENCY RANGE OF 12.0 TO 18.0 GHZ. IT HAS A MINIMUM ISOLATION OF 60 dB AND A MAXIMUM INSERTION LOSS OF 2.5 dB. THIS MODEL IS OUTFITTED WITH SMA FEMALE CONNECTORS.

SPECIFICATIONS

- FREQUENCY RANGE: 12.0 TO 18.0 GHz
- INTERFACE: TTL (1: OFF, 0: ON)
- ISOLATION: 60 dB MIN
- FREQUENCY RIPPLE: ± 0.5 dB MAX
- INSERTION LOSS: 2.5 dB MAX
- VIDEO FEEDTHROUGH: 5 mV @ 100 MHz BW MAX
- SWITCHING TIME: 100 ns MAX
- RISE TIME 10/90%: 20 ns MAX
- FALL TIME 90/10%: 20 ns MAX
- INPUT VSWR (NON-REFLECTIVE): 2:1 MAX
- OUTPUT VSWR (REFLECTIVE): 2:1 MAX
- IMPEDANCE: 50 OHMS
- RF INPUT POWER: CW +25 dBm MAX
- SUPPLY VOLTAGES: +5 V \pm 5%
-15 V \pm 5%
50 mV RIPPLE (100 MHz BW)
- SUPPLY CURRENT: +60 mA MAX
-30 mA MAX
- CONNECTORS: SMA FEMALE
- WEIGHT: 10 g MAX
- COOLING: NATURAL CONVECTION AND RADIATION
- FINISH: GOLD PLATED

*THE UNIT SHALL NOT SUFFER ANY DAMAGE OR PERMANENT DEGRADATION IN PERFORMANCE RESULTING FROM THE FOLLOWING CONDITIONS:

- 25% SUPPLY OVER-VOLTAGE
- ABSENCE OF ANY SUPPLY OF ANY DURATION
- REVERSE POWER CONNECTION

ENVIRONMENTAL RATINGS

- TEMPERATURE: -30 °C TO +85 °C (OPERATING)
-40 °C TO +85 °C (STORAGE)
- VIBRATION: RANDOM: 20 - 500 Hz
SPECTRAL DENSITY: $0.01g^2/Hz$
RMS: 2.2 g
- MECHANICAL SHOCK: PEAK: 100 g
DURATION: 4 ms, HALFSINE
- HUMIDITY: 90%
- PRESSURE: OPERATION: 0.6 - 1.4 BAR
STORAGE: 0.3 - 1.4 BAR
VARIATION: ± 0.5 BAR
- CORROSION: RESISTANT AGAINST SEAWATER
- MTBF: 200,000 h
- EMC: NO RADIATION

NOTE: SPECIFICATIONS WILL VARY OVER OPERATING TEMPERATURE

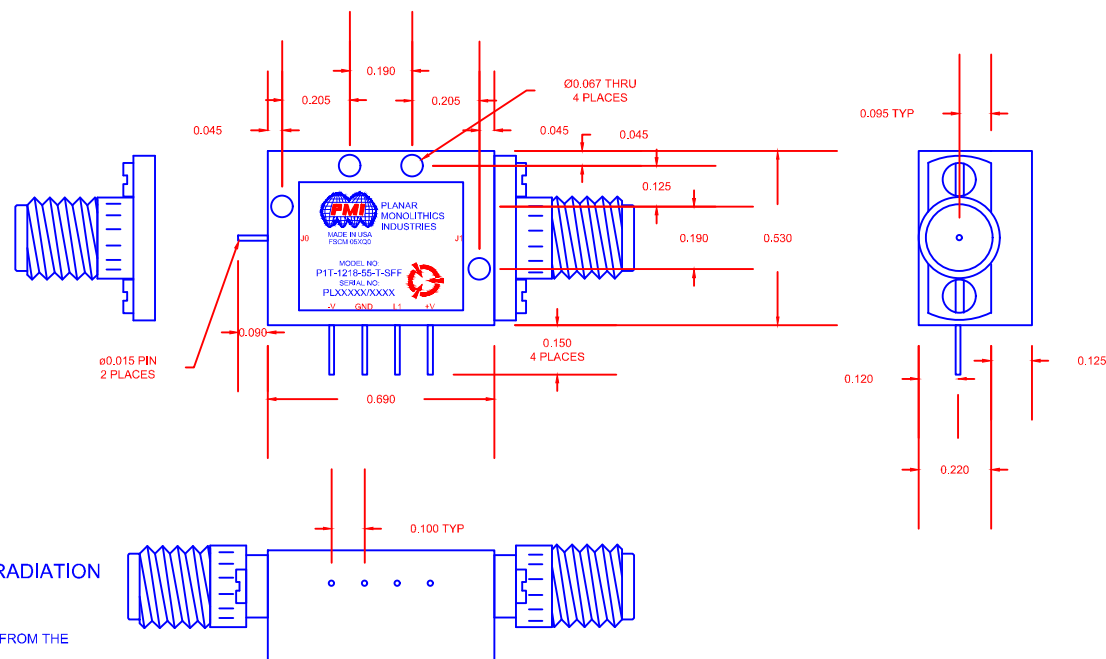
NOTE: THE ABOVE SPECIFICATIONS ARE SUBJECT TO CHANGE OR REVISION

PMI CONFIDENTIAL AND PROPRIETARY

ALL DIMENSIONS
ARE IN INCHES [mm]
TOLERANCES:
X.XX ± 0.020
X.XXX ± 0.010

REVISIONS				
ZONE	REV.	DESCRIPTION	DATE	APPROVED
	A1	ORIGINAL RELEASE	11/19/2020	

MECHANICAL OUTLINE



PLANAR MONOLITHICS INDUSTRIES, INC.
7311-F GROVE ROAD
FREDERICK, MARYLAND 21704 USA
TEL: (301)-662-5019, FAX: (301)-662-1731
WEB: www.pmi-rf.com, EMAIL: sales@pmi-rf.com
ISO 9001 CERTIFIED



APPROVALS		DATE		TITLE	
DRAWN		10/14/19		PRODUCT FEATURE	
REDRAWN				P1T-1218-55-T-SFF	
ISSUED					
SIZE	A	FSCM NO.	05XQ0	DWG NO.	27039980
SCALE	N:S			SHEET	1 OF 1