

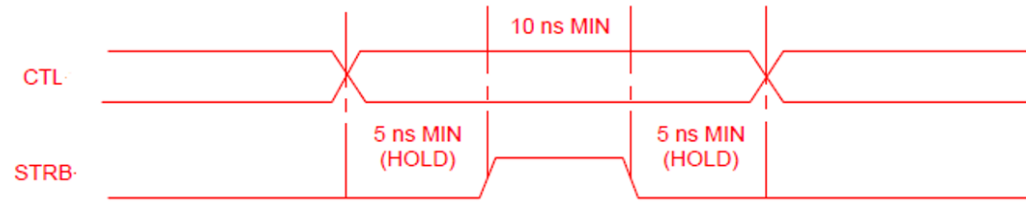
DESCRIPTION:

PMI MODEL PS-200M10G-8B-STRB-SFF IS A 8-BIT DIGITAL PHASE SHIFTER THAT OPERATES OVER THE 200 MHz TO 10 GHz FREQUENCY RANGE. THIS MODEL OFFERS 360 DEGREES OF PHASE SHIFT WITH THE LEAST SIGNIFICANT BIT OF 1.4 DEGREES.

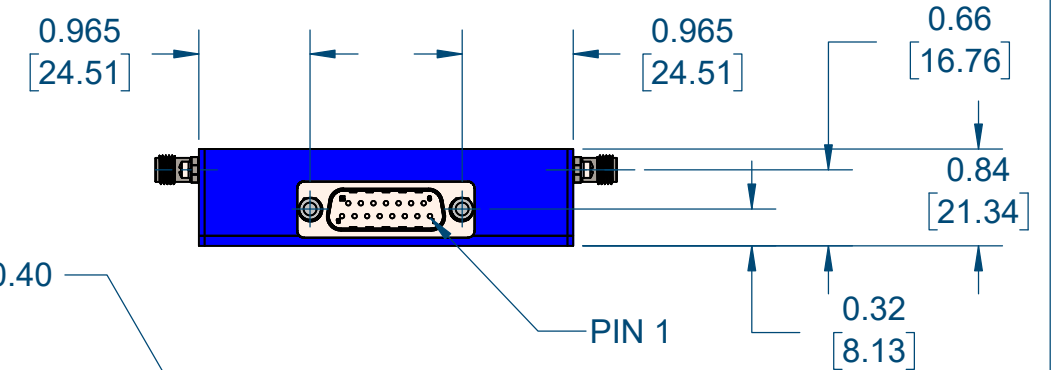
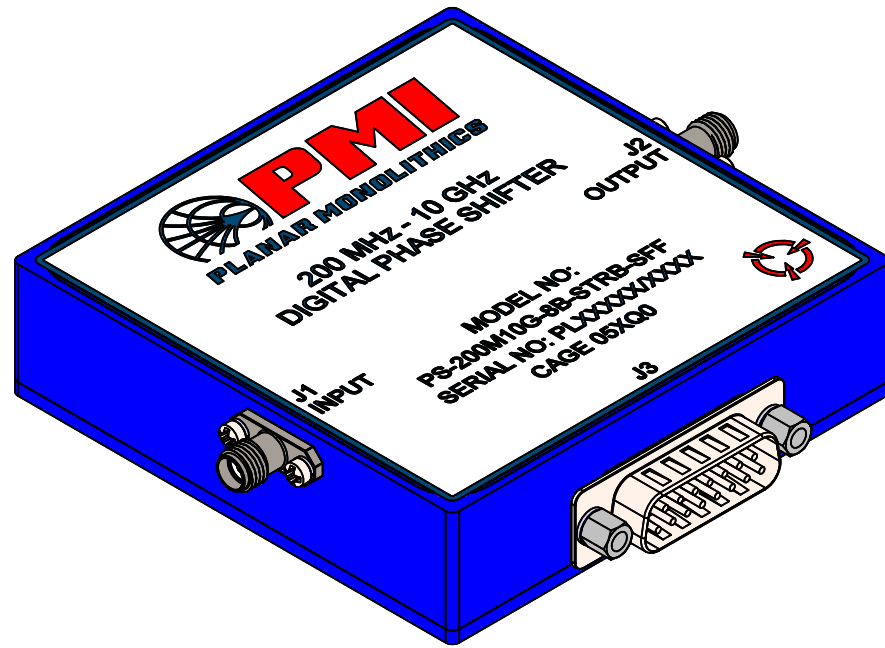
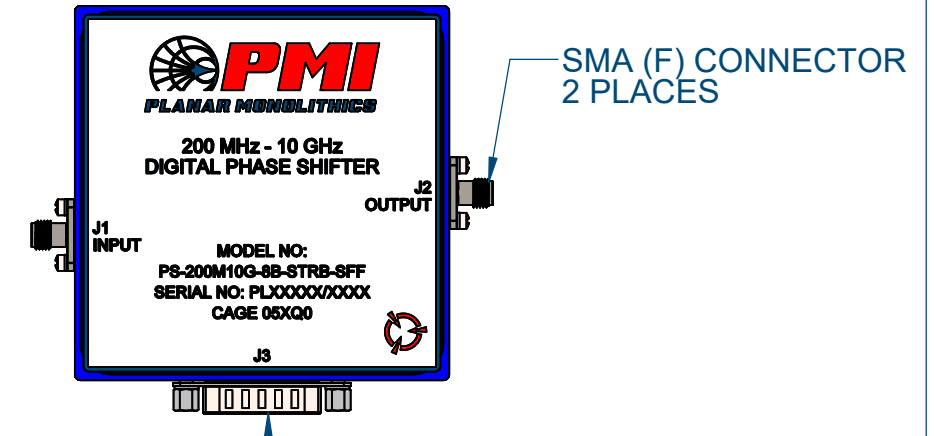
SPECIFICATIONS:

MEASURED AT -10 dBm INPUT POWER

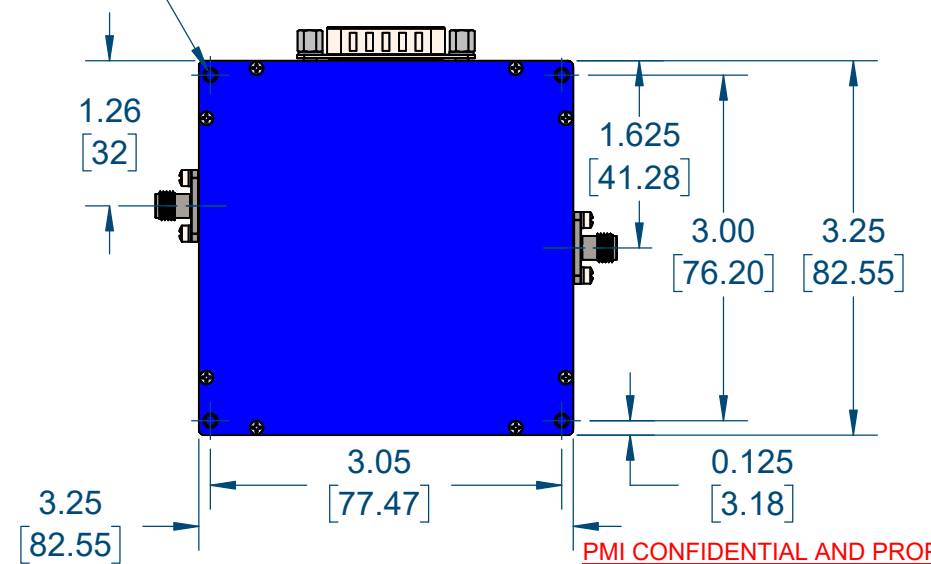
- FREQUENCY RANGE:..... 200 MHz TO 10 GHz
- CONTROL:..... 8 BIT TTL
- INSERTION LOSS:..... 10.5 dB TYP.
- PHASE SHIFT:..... 360°
- PHASE SHIFT ERROR:..... ±15° TYP.
- SWITCHING SPEED:..... 500 ns MAX.
- DC SUPPLY:..... +15 V @ 350 mA MAX.
-15 V @ 50 mA MAX.
- CONNECTORS:..... RF: SMA FEMALE
CONTROL: 15 PIN SUBMINIATURE D (MALE)
MATING CONNECTOR SUPPLIED WITH THE UNIT
- SIZE:..... 3.25" x 3.25" x 0.84"
[82.55 mm x 82.55 mm x 21.34 mm]
- FINISH:..... PAINTED BLUE



ITT CANNON DA-15P OR EQUIV. WITH D110551 JACKPOSTS MATING CONNECTORS PROVIDED



| ELECTRICAL CONNECTOR PIN ASSIGNMENTS | |
|--------------------------------------|------------|
| PIN | FUNCTION |
| 1 | -VDC |
| 2 | +VDC |
| 3 | Latch/STRB |
| 4 | 1.4° (LSB) |
| 5 | 5.6° |
| 6 | 45° |
| 7 | 180° (MSB) |
| 8 | 90° |
| 9 | GND |
| 10 | N/C |
| 11 | 22.5° |
| 12 | 2.8° |
| 13 | 11.3° |
| 14 | N/C |
| 15 | N/C |



ENVIRONMENTAL RATINGS:

- TEMPERATURE:..... -55°C TO +85°C (OPERATING)
-65°C TO +125°C (STORAGE)
- HUMIDITY:..... MIL-STD-202, METHOD 103B COND. B
- SHOCK:..... MIL-STD-202, METHOD 213B COND. B
- VIBRATION:..... MIL-STD-202, METHOD 204D COND. B
- ALTITUDE:..... MIL-STD-202, METHOD 105C COND. B
- TEMPERATURE CYCLE:..... MIL-STD-202, METHOD 107D COND. A

NOTE: SPECIFICATIONS WILL VARY OVER TEMPERATURE
NOTE: THE ABOVE SPECIFICATIONS ARE SUBJECT TO CHANGE OR REVISION

| ZONE | REV. | DESCRIPTION | DATE | APPROVED |
|------|------|------------------|---------|----------|
| | A1 | ORIGINAL RELEASE | 1/19/26 | |

PMI CONFIDENTIAL AND PROPRIETARY

| | | | | | |
|--|-------------------|---|--------------|---|--|
| <p>Quantic PMI PLANAR MONOLITHICS 7309-A GROVE ROAD FREDERICK MARYLAND 21704 USA TEL: (301) 662-5019, FAX: (301) 662-1731 WEB: WWW.QUANTICPMI.COM, EMAIL: SALES@QUANTICPMI.COM ISO 9001 CERTIFIED</p> | | <p>APPROVALS DATE DRAWN AL 1/19/26 REDRAWN ISSUED</p> | | <p>TITLE OUTLINE PS-200M10G-8B-STRB-SFF</p> | |
| SIZE B | FSCM NO. 05XQ0 | DWG NO. 27054100 | REV. A1 | | |
| SCALE 0.6:1 | | | SHEET 1 OF 1 | | |

UNLESS OTHERWISE SPECIFIED DIMENSIONS ARE IN INCHES TOLERANCES ARE:
FRACTIONS DECIMALS ANGLES
± .XX ± 0.02 ±
XXX ± 0.01