

SUMMARY TEST DATA ON PE71S6213

Customer: _____
 SO No: _____
 Model No: _____
 Serial No: 34115

Tested By: Fredy Ramos
 Temperature: +25°C
 Date: 3/16/2023
 Drawing No: 27616561 Rev: A2

TEST ITEM NO.	PARAMETERS	SPECIFIED VALUE	TEST RESULTS	QA QC	
1	Frequency Range:	0.5 - 18 GHz	0.5 - 18 GHz	PMI QA2	
2	Insertion Loss:	4.5 dB Max.	4.37 dB See Plot		
3	Isolation:	55 dB Min.	64.3 dB See Plot		
4	VSWR: (In/Out)	2.0:1 Max.	1.98:1 In 1.93:1 Out See Plot		
5	Switching Speed:	100 ns Typ.	See Typical Characteristics		
6	Operating Input Power:	+20 dBm CW	See Typical Characteristics		
7	DC Supply:	+5 VDC @ 400 mA Typ. -5 VDC @ 200 mA Typ.	+5 VDC @ 68 mA -5 VDC @ 13 mA		
8	Control Signal:	Eight Line TTL "0" Isolation "1" Insertion Loss E1: J1-J2 E2: J1-J3 E3: J1-J4 E4: J1-J5 E5: J1-J6 E6: J1-J7 E7: J1-J8 E8: J1-J9	Pass		PMI QA2

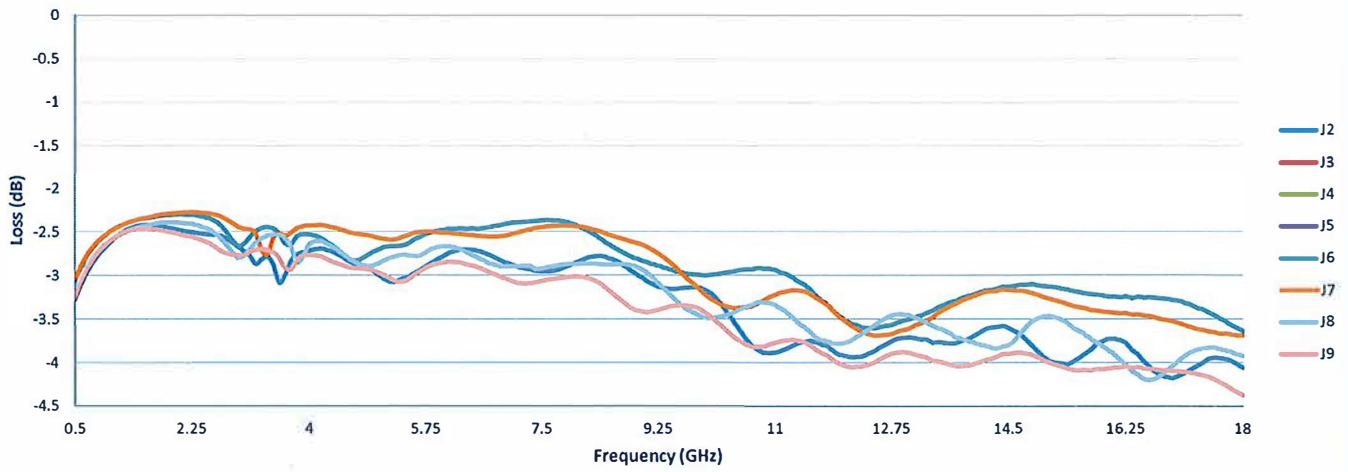
QA/QC Approval:  PMI QA2

Date: 3/17/2023

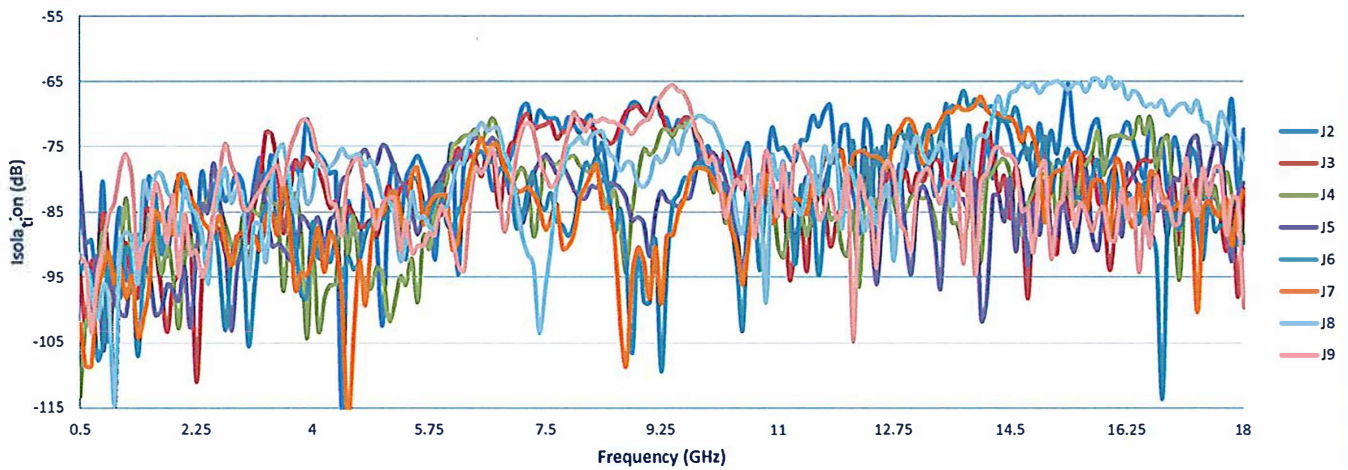
SUMMARY TEST DATA ON PE71S6213

34115

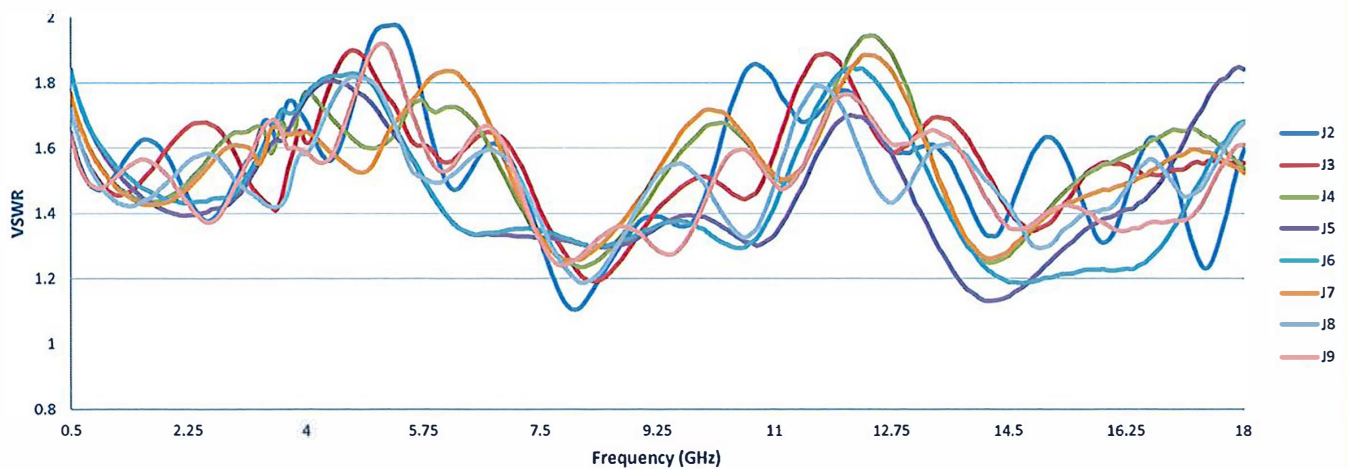
Insertion Loss



Isolation



Input VSWR (On)



SUMMARY TEST DATA ON PE71S6213

3115

