

SUMMARY TEST DATA ON P4T-500M40G-60-T-55-292FF-SP

Customer: _____
 SO No: _____
 Model No: P4T-500M40G-60-T-55-292FF-SP
 Serial No: 64961
 Part No: _____

Tested By: Darwin Martinez-Castro
 Temperature: 25 Degrees C
 Date: 4/16/2026
 Drawing No: 27616658 Rev: A3

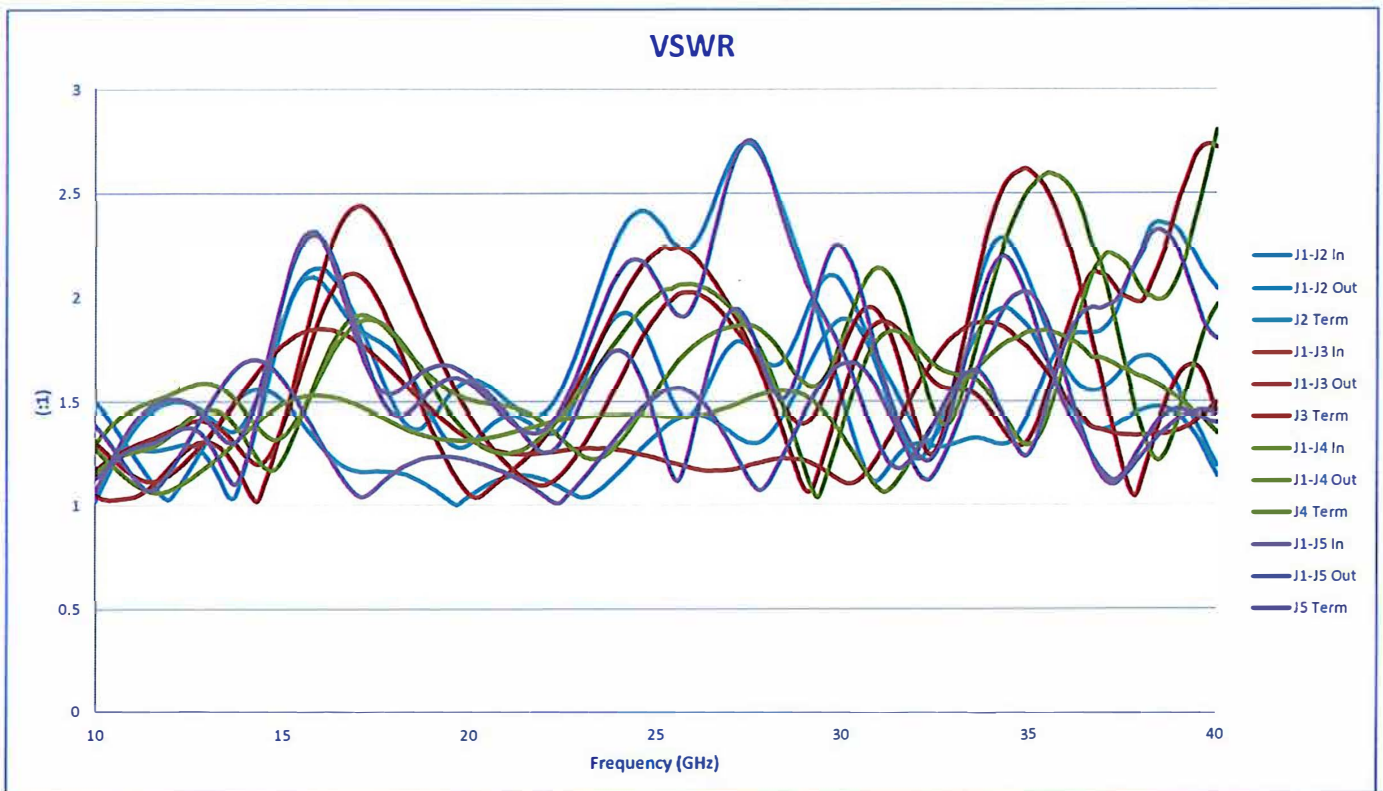
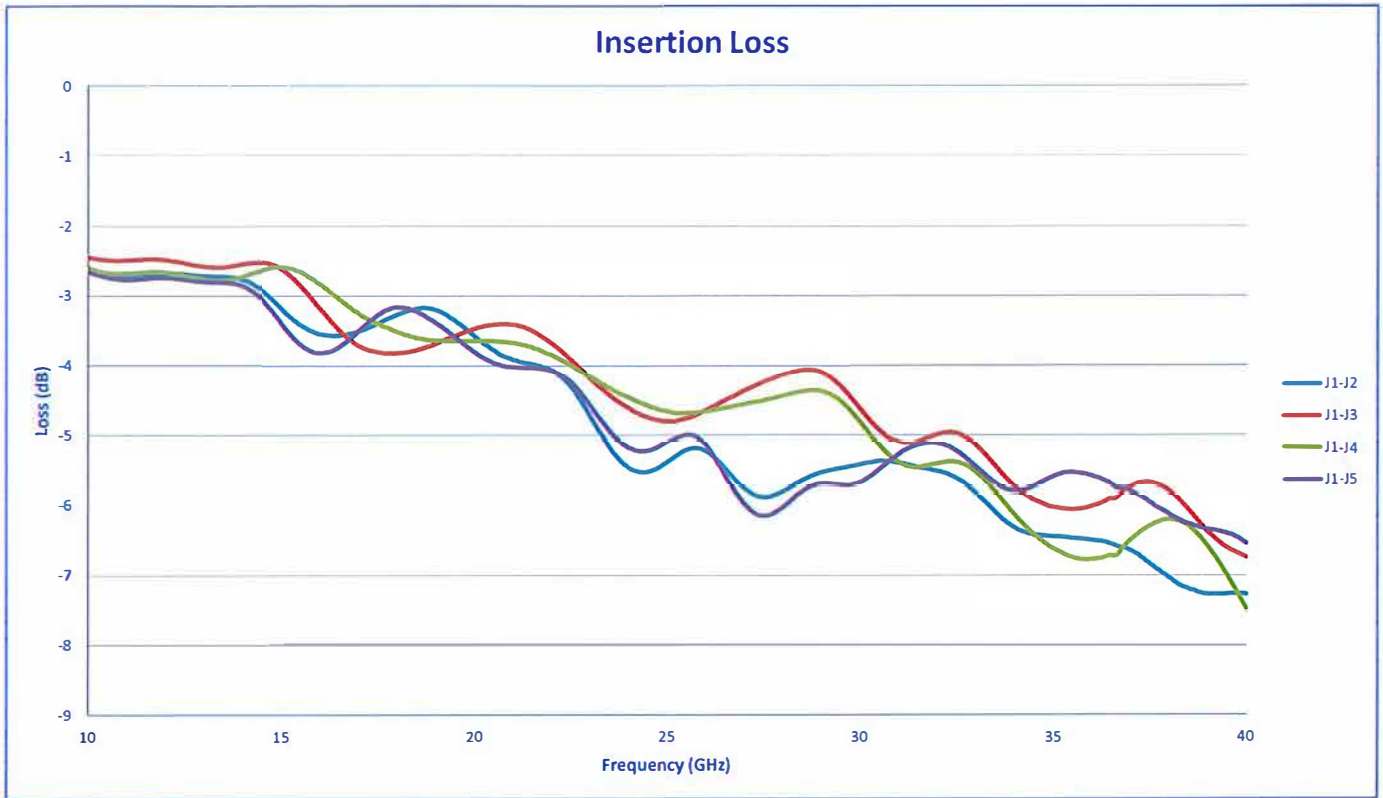
TEST ITEM NO.	PARAMETERS	SPECIFIED VALUE			TEST RESULTS	QA QC
1	Frequency Range:	0.5 to 40 GHz			0.5 to 40 GHz	PMI QA5
2	Isolation:	55 dB Min			69 dB (See Graph)	
3	Insertion Loss:	8.0 dB Max			7.5 dB (See Graph)	
4	VSWR:	2.5:1 Typ			2.8:1 In/Out 2:1 Out/Off (See Graph)	
5	Input Power:	+20 dBm CW Max			Pass (See Typical Characteristics)	
6	Survival Power:	1W Peak 1us			Pass (See Typical Characteristics)	
7	RF Switching Speed:	Rise: 15ns Max Fall: 15ns Max Delay On: 50ns Max Delay Off: 50ns Max			Pass (See Typical Characteristics)	
8	DC Voltage:	+5V @ 250 mA Max -5V @ 100 mA Max			88 mA 65 mA	
9	Control Signal:	E1	E2	Function	Pass	
		0	0	J1-J2 "Low Loss"		
		0	1	J1-J3 "Low Loss"		
		1	0	J1-J4 "Low Loss"		
		1	1	J1-J5 "Low Loss"		

QA/QC Approval: *Jordan Byrd*

Date: 4.17.26

**SUMMARY TEST DATA
ON
P4T-500M40G-60-T-55-292FF-SP**

64961



SUMMARY TEST DATA
ON
P4T-500M40G-60-T-55-292FF-SP

64961

