

## DESCRIPTION

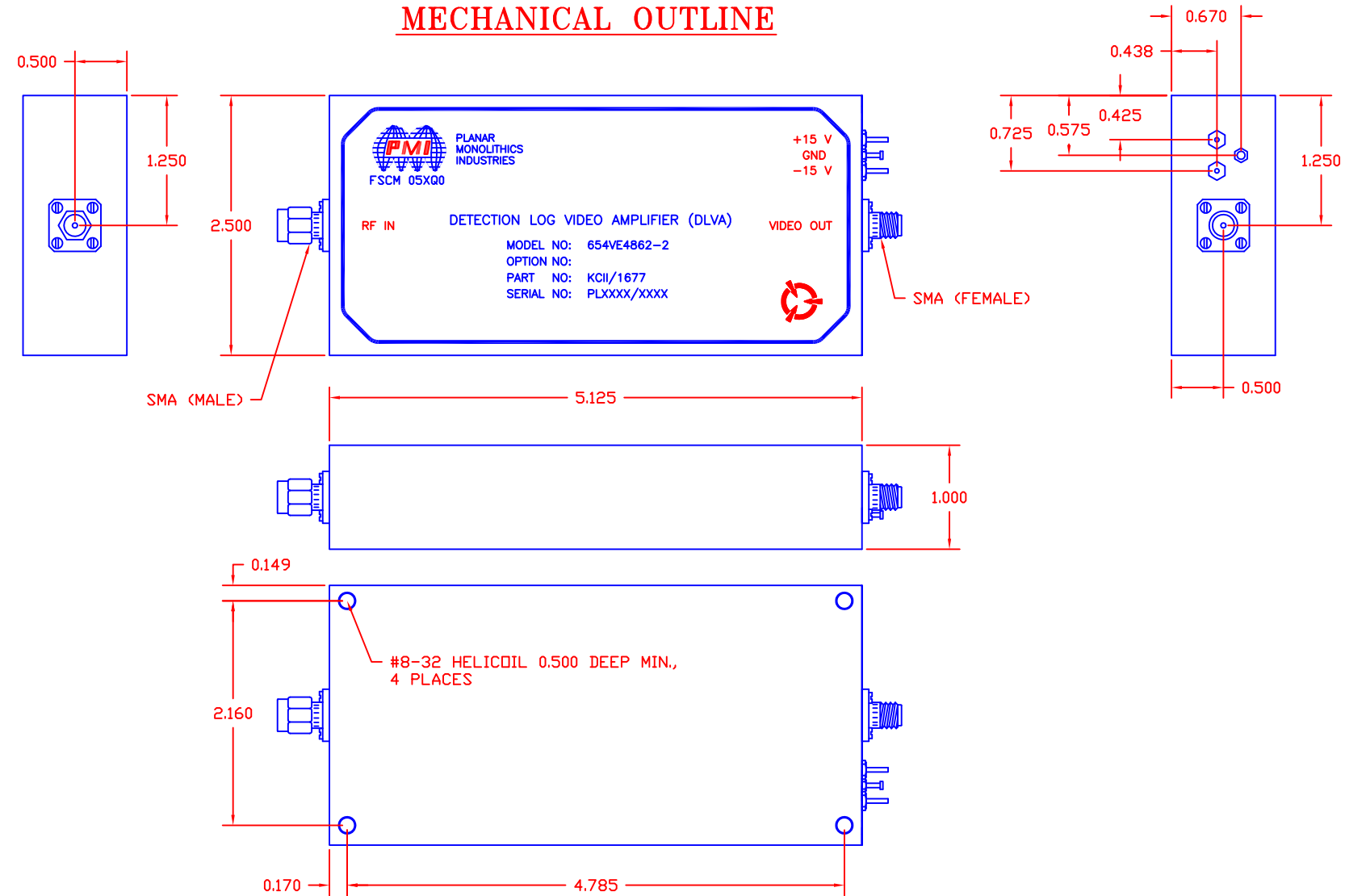
PMI MODEL 654VE4862-2 IS AN AC COUPLED 0.5 – 1.0 GHz DETECTION LOG VIDEO AMPLIFIER. THE MINIMUM LOGGING RANGE IS -44 TO 0 dBm WITH A LOG SLOPE OF 50 mV / dB. THE NORMAL OUTPUT VOLTAGE AT 0 dBm INTO A 100 OHM LOAD IS 2.5V PEAK.

REVISIONS				
ZONE	REV.	DESCRIPTION	DATE	APPROVED
	A	ORIGINAL RELEASE	8/5/09	

## SPECIFICATIONS

- FREQUENCY RANGE: . . . . . 0.5 GHz TO 1.0 GHz
- VSWR: . . . . . 2.0 : 1 TYPICAL
- FLATNESS: . . . . . ± 0.2 dB TYPICAL
- Tss: . . . . . -45 dBm MIN
- LOGGING RANGE: . . . . . -44 TO 0 dBm
- LOGGING ACCURACY: . . . . . ± 0.5 dB TYPICAL AT ONE FREQUENCY
- LOG SLOPE: . . . . . 50 mV / dB NOMINAL
- OUTPUT VOLTAGE: . . . . . 2500 mV (PEAK)  
INTO 100 OHMS @ 0 dBm
- COUPLING: . . . . . AC
- TEMPERATURE VARIATION: . . . . . -44 TO -39 dBm ± 1.5 dB MAX  
-54° C TO +71° C  
-39 TO 0 dBm ± 1.0 dB MAX
- DC VOLTAGE: . . . . . ± 15 VDC @ 100 mA MAX EACH SUPPLY
- CONNECTORS IN/OUT: . . . . . SMA (M) RF INPUT, SMA (F) VIDEO OUTPUT
- SIZE: . . . . . 5.125" X 2.50" X 1.00"
- FINISH: . . . . . 50 uin. GOLD PLATING MIN. OVER  
COPPER FLASH OVER NICKEL FLASH  
PER MIL-G 45204 TYPE 2

## MECHANICAL OUTLINE



## ENVIRONMENTAL RATINGS

- TEMPERATURE: . . . . . -54°C TO +71°C (OPERATING)  
-65°C TO +125°C (STORAGE)
- HUMIDITY: . . . . . MIL-STD-810F, METHOD 507.4
- SHOCK: . . . . . MIL-STD-810F, METHOD 516.5
- VIBRATION: . . . . . MIL-STD-810F, METHOD 514.5
- ALTITUDE: . . . . . MIL-STD-810F, PROCEDURE II
- TEMPERATURE CYCLE: . . . . . MIL-STD-810F, METHOD 503.4, PROCEDURE I

NOTE: SPECIFICATIONS WILL VARY OVER OPERATING TEMPERATURE  
NOTE: THE ABOVE SPECIFICATIONS ARE SUBJECT TO CHANGE OR REVISION

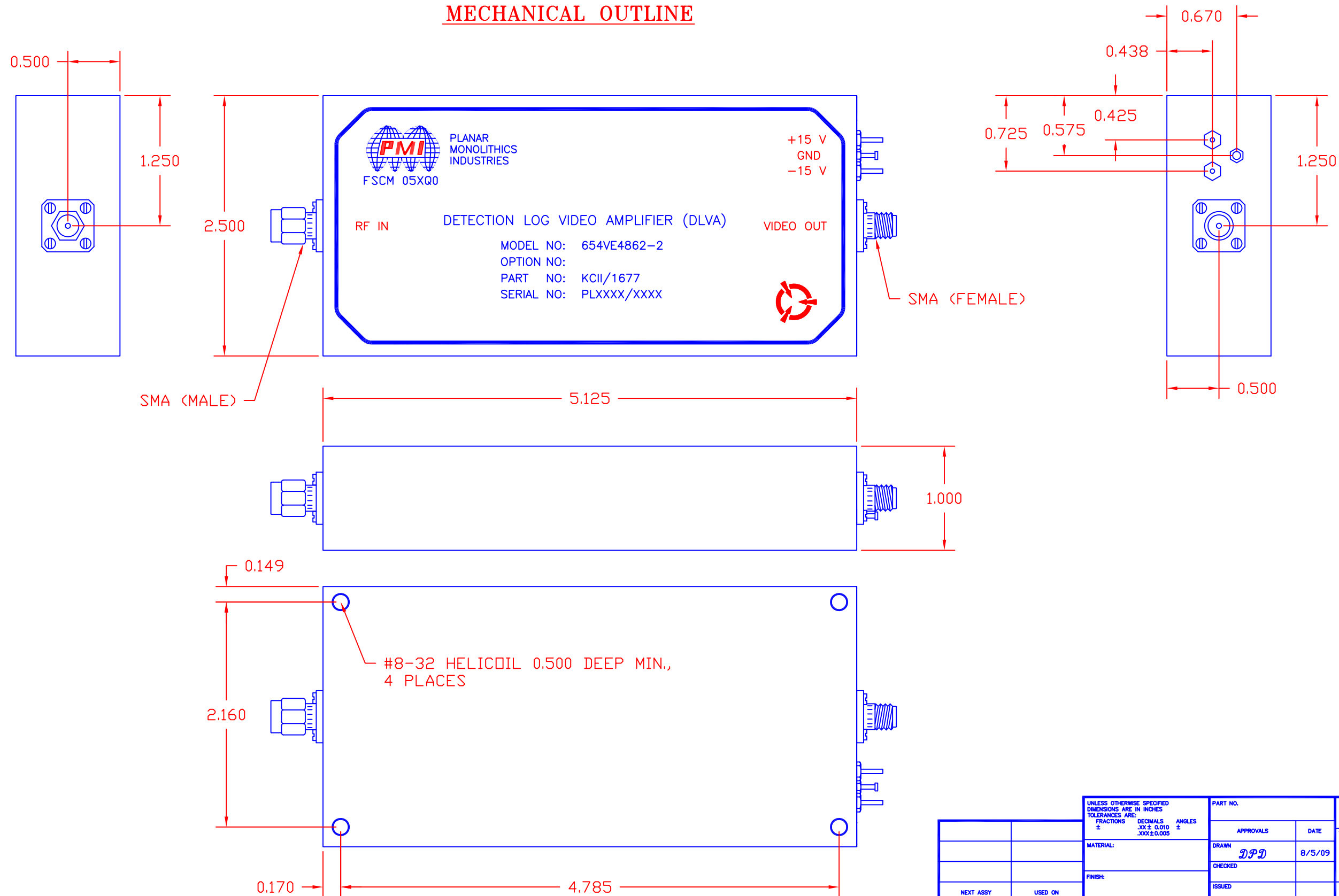
UNLESS OTHERWISE SPECIFIED DIMENSIONS ARE IN INCHES TOLERANCES ARE: FRACTIONS . . . . . DECIMALS . . . . . ANGLES . . . . . ± . . . . . ± . . . . . ± . . . . . .XX ± 0.010 ± .XXX ± 0.005 ±		PART NO.		PLANAR MONOLITHICS INDUSTRIES 5715 INDUSTRY LANE UNIT 11 FREDERICK, MARYLAND	
APPROVALS		DATE		TITLE	
DRAWN <i>DPD</i>		8/5/09		OUTLINE DRAWING 654VE4862-2	
CHECKED				SIZE FSCM NO. DWG NO. REV. B . . . . . 27010868 . . . . . A	
ISSUED				SCALE N/S SHEET 1 OF 2	
NEXT ASSY		USED ON		APPLICATION DO NOT SCALE DRAWING	

# DESCRIPTION

PMI MODEL 654VE4862-2 IS AN AC COUPLED 0.5 - 1.0 GHz DETECTION LOG VIDEO AMPLIFIER. THE MINIMUM LOGGING RANGE IS -44 TO 0 dBm WITH A LOG SLOPE OF 50 mV / dB. THE NORMAL OUTPUT VOLTAGE AT 0 dBm INTO A 100 OHM LOAD IS 2.5V PEAK.

REVISIONS				
ZONE	REV.	DESCRIPTION	DATE	APPROVED
	A	ORIGINAL RELEASE	8/5/09	

# MECHANICAL OUTLINE



UNLESS OTHERWISE SPECIFIED DIMENSIONS ARE IN INCHES TOLERANCES ARE: FRACTIONS DECIMALS ANGLES ± .XX ± 0.010 ± ± .XXX ± 0.005 ±		PART NO.		PLANAR MONOLITHICS INDUSTRIES 5715 INDUSTRY LANE UNIT 11 FREDERICK, MARYLAND	
APPROVALS		DATE		TITLE	
DRAWN <i>DPD</i>		8/5/09		OUTLINE DRAWING 654VE4862-2	
CHECKED		ISSUED		SIZE FSCM NO. DWG NO. REV. B 27010868 A	
NEXT ASSY		USED ON		SCALE N/S SHEET 2 OF 2	
APPLICATION		DO NOT SCALE DRAWING			