

DESCRIPTION

PMI MODEL: 6CL9227D5M-180-CD-PIN IS A COMBLINE FILTER WITH PIN CONNECTORS. ALL FILTERS WILL BE MACHINED AND SILVER PLATED TO PROVIDE THE HIGHEST POSSIBLE Q.

SPECIFICATIONS

- CENTER FREQUENCY: ----- 9227.5 MHz NOMINAL
- 3 dB BANDWIDTH: ----- 180 MHz TYPICAL
- VSWR IN THE PASS BAND: ----- 1.5:1 MAXIMUM
- INSERTION LOSS (Fo): ----- 1.0 dB TYPICAL
- PHASE LINEARITY (9207.5 TO 9247.5 MHz): ----- $\pm 3.2^\circ$ TYPICAL
- REJECTION -60 dB NOMINAL: ----- 8823.5 MHz
- REJECTION -60 dB NOMINAL: ----- 9671.5 MHz
- IMPEDANCE: ----- 50 Ω
- CONNECTORS: ----- PIN
- SIZE: ----- 1.90" x 0.40" x 0.35"
48.26 mm x 10.16 mm x 8.89 mm
EXCLUDING MOUNTING TABS
- WEIGHT: ----- 1 OZ. TYPICAL
- SURFACE FINISH: ----- GRAY EPOXY POLIMIDE COATING IAW MIL-C-22750, TYPE I OVER EPOXY POLIMIDE PRIMER IAW MIL-P-23377, TYPE I, CLASS 1 OR 3.

ENVIRONMENTAL RATINGS

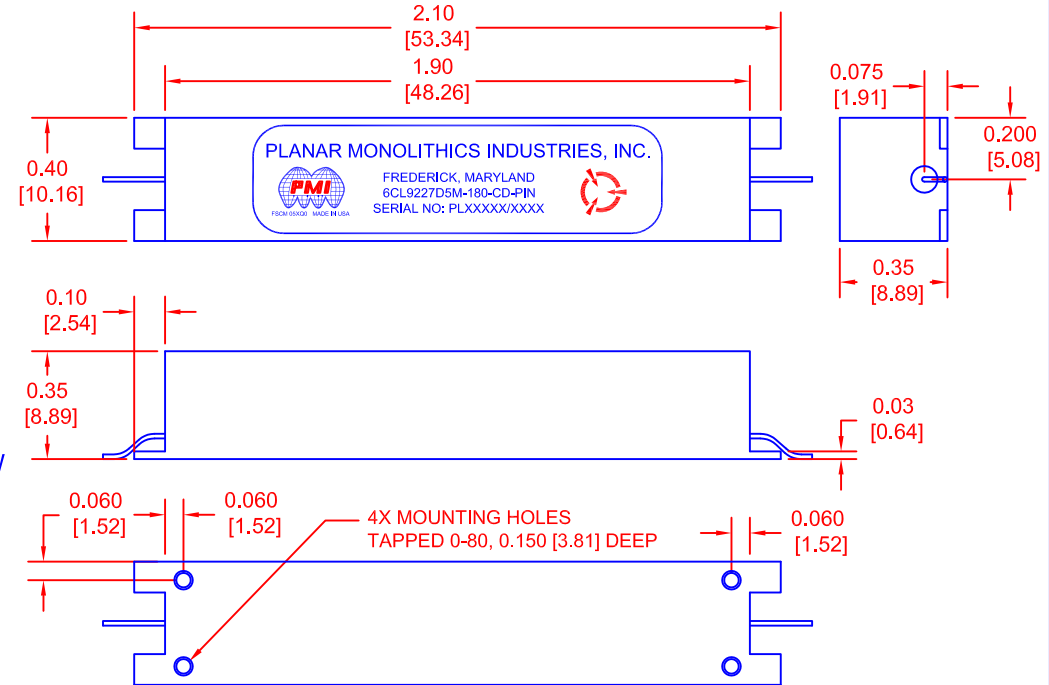
- TEMPERATURE: ----- -55 °C TO +85 °C (OPERATING)
-65 °C TO +125 °C (STORAGE)
- HUMIDITY: ----- MIL-STD-202, METHOD 103B COND. B
- SHOCK: ----- MIL-STD-202, METHOD 213B COND. B
- VIBRATION: ----- MIL-STD-202, METHOD 204D COND. B
- ALTITUDE: ----- MIL-STD-202, METHOD 105C COND. B
- SALT FOG: ----- MIL-STD-202, METHOD 107D COND. B
- FUNGUS: ----- MIL-STD-810, METHOD 508.2
- TEMPERATURE CYCLE: ----- MIL-STD-202, METHOD 107D COND. A

NOTE: SPECIFICATIONS WILL VARY OVER OPERATING TEMPERATURE
NOTE: THE ABOVE SPECIFICATIONS ARE SUBJECT TO CHANGE OR REVISION

REVISIONS				
ZONE	REV.	DESCRIPTION	DATE	APPROVED
	-	PRELIMINARY	03/29/16	

MECHANICAL OUTLINE

VIEW FROM TOP



VIEW FROM BOTTOM

PMI CONFIDENTIAL AND PROPRIETARY

PLANAR MONOLITHICS INDUSTRIES, INC.

7311-F GROVE ROAD
FREDERICK, MARYLAND 21704 USA
TEL: (301)-662-5019, FAX: (301)-662-1731
WEB: www.pmi-rf.com, EMAIL: sales@pmi-rf.com
ISO 9001 CERTIFIED



ALL DIMENSIONS ARE IN INCHES
TOLERANCES:
X.XX ± 0.020
X.XXX ± 0.010

APPROVALS		DATE	TITLE			
DRAWN <i>M. Berry</i>		03/29/16	PRODUCT FEATURE 6CL9227D5M-180-CD-PIN			
CHECKED			SIZE	FSCM NO.	DWG NO.	REV.
ISSUED			A	05XQ0	PRELIMINARY	-
			SCALE	N:S		SHEET 1 OF 1