

## DESCRIPTION

PMI MODEL APD-8-800M2D5G-SFF-30W IS AN EIGHT WAY POWER DIVIDER FEATURING HIGH ISOLATION, LOW INSERTION LOSS, AND LOW VSWR. IT IS DESIGNED FOR BROADBAND USE AND HIGH RELIABILITY.

## SPECIFICATIONS

- FREQUENCY RANGE: 0.8 TO 2.5 GHz
- INSERTION LOSS:  $\leq 1.2$  dB
- VSWR:  $\leq 1.40:1$
- ISOLATION: 20 dB MINIMUM
- AMPLITUDE BALANCE:  $\leq \pm 0.5$  dB
- PHASE BALANCE:  $\leq \pm 5^\circ$
- POWER HANDLING: FORWARD  $\leq 30$  W  
REVERSED  $\leq 1$  W
- IMPEDANCE: 50  $\Omega$
- CONNECTORS: SMA FEMALE (X9)
- FINISH: PAINTED BLUE

## ENVIRONMENTAL RATINGS

- TEMPERATURE: -55 °C TO +85 °C (OPERATING)  
-65 °C TO +125 °C (STORAGE)
- HUMIDITY: MIL-STD-202F, METHOD 103B COND. B
- SHOCK: MIL-STD-202F, METHOD 213B COND. B
- VIBRATION: MIL-STD-202F, METHOD 204D COND. B
- ALTITUDE: MIL-STD-202F, METHOD 105C COND. B
- TEMPERATURE CYCLE: MIL-STD-202F, METHOD 107D COND. A

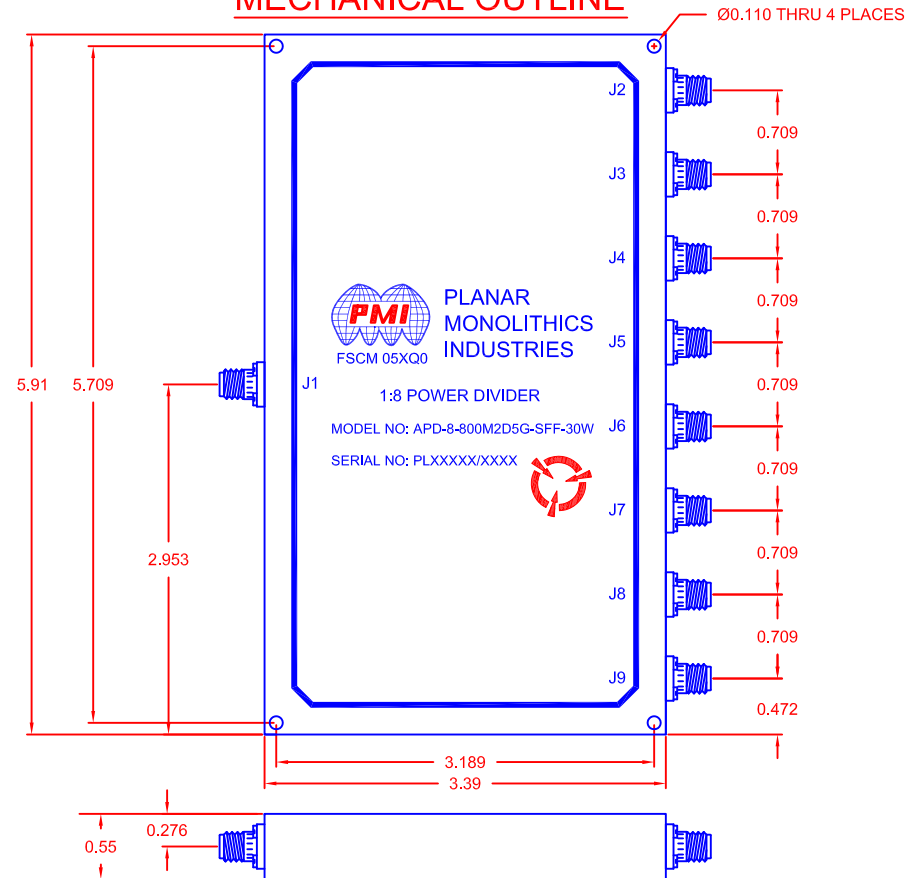
NOTE: SPECIFICATIONS WILL VARY OVER OPERATING TEMPERATURE  
NOTE: THE ABOVE SPECIFICATIONS ARE SUBJECT TO CHANGE OR REVISION

ALL DIMENSIONS ARE IN INCHES  
TOLERANCES:  
X.XX  $\pm 0.020$   
X.XXX  $\pm 0.010$

**PMI CONFIDENTIAL AND PROPRIETARY**

REVISIONS				
ZONE	REV.	DESCRIPTION	DATE	APPROVED
	A1	ORIGINAL RELEASE	05/14/15	

## MECHANICAL OUTLINE



**PLANAR MONOLITHICS INDUSTRIES, INC.**  
7311-F GROVE ROAD  
FREDERICK, MARYLAND 21704 USA  
TEL: (301)-662-5019, FAX: (301)-662-1731  
WEB: [www.pmi-rf.com](http://www.pmi-rf.com), EMAIL: [sales@pmi-rf.com](mailto:sales@pmi-rf.com)  
ISO 9001 CERTIFIED



APPROVALS		DATE	TITLE			
DRAWN <i>M. Berry</i>		05/14/15	PRODUCT FEATURE APD-8-800M2D5G-SFF-30W			
CHECKED			SIZE A	FSCM NO. 05XQ0	DWG NO. 27025681	REV. A1
ISSUED			SCALE N:S		SHEET 1 OF 1	