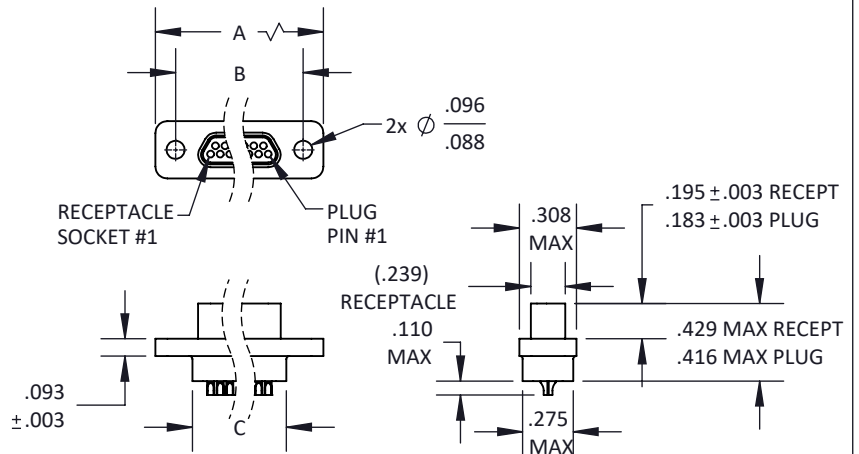
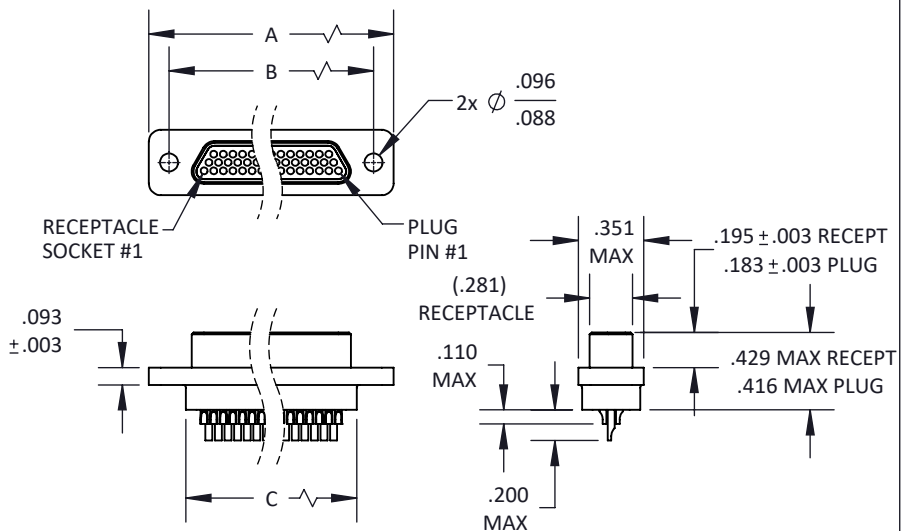
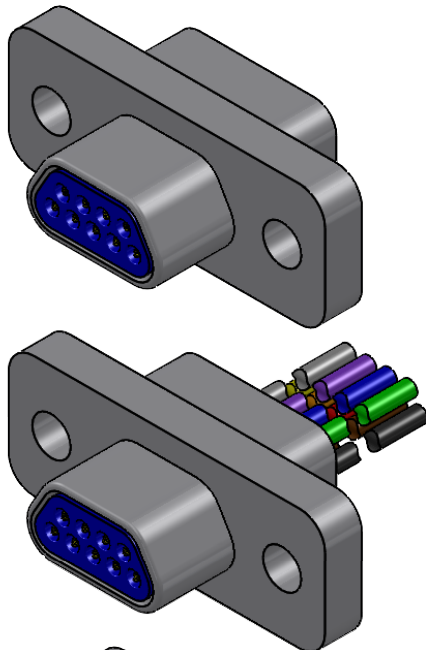


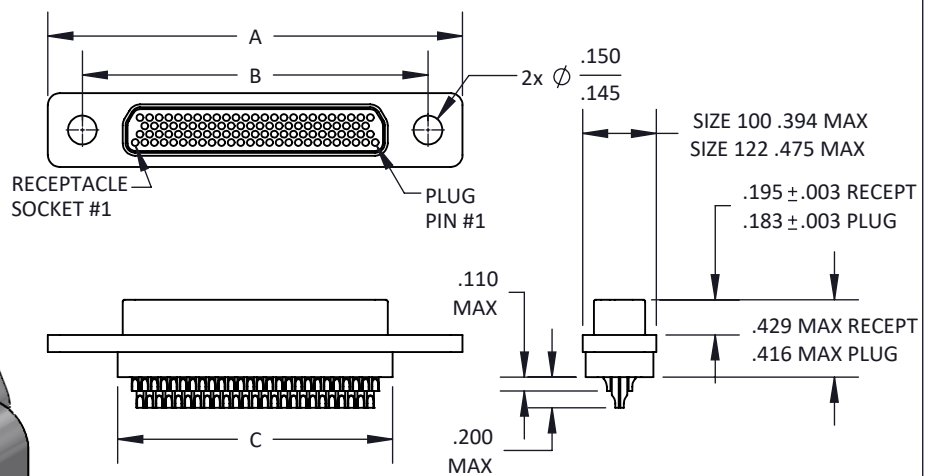
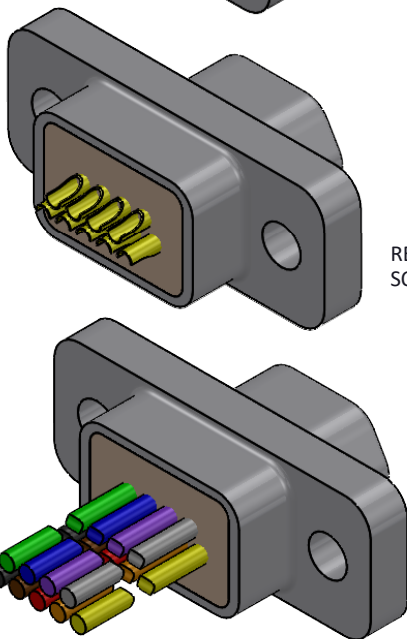
NO. OF CONTACTS	A MAX	B BSC	C MAX
9	.785	.565	.400
15	.935	.715	.550
21	1.085	.865	.700
25	1.185	.965	.800
31	1.335	1.115	.950
37	1.485	1.265	1.100
51	1.435	1.215	1.050
69	1.737	1.515	1.350
100	2.170	1.800	1.442
122	2.170	1.800	1.442



9-37 CONTACTS



51-69 CONTACTS



100 - 122 CONTACTS

TOLERANCE: .XXX  $\pm .005$   
.XX  $\pm .01$   
ANGLE  $\pm 1^\circ$

TITLE  
MICRO-D METAL SHELL

SHT 1 OF 4

DWG. NO.  
CMD

REV  
T

### CMDXXX X—X X X X X X —EMI

CRISTEK METAL SHELL  
MICRO-D CONNECTORS  
(MATE WITH M83513)

NUMBER OF CONTACTS  
009 025 051 122  
015 031 069  
021 037 100

GENDER  
P = PLUG, PIN CONTACTS  
S = RECEPTACLE, SOCKET CONTACTS

HARDWARE  
0 = NONE  
FACTORY INSTALLED (NON-REMOVABLE)  
F = FLOAT MOUNT  
J = HIGH PROFILE HEX DRIVE JACKSCREW  
K = HIGH PROFILE SLOTTED JACKSCREW  
L = LOW PROFILE HEX DRIVE JACKSCREW, .050 HEX\*  
M = LOW PROFILE HEX DRIVE JACKSCREW, .062 HEX\*  
T = THREADED INSERT  
M83513 HARDWARE - FACTORY INSTALLED  
2 = LOW PROFILE HEX DRIVE JACKSCREW \*  
3 = HIGH PROFILE HEX DRIVE JACKSCREW  
5 = LOW PROFILE SLOTTED JACKSCREW \*  
6 = HIGH PROFILE SLOTTED JACKSCREW  
7 = JACKPOST KIT \*  
(HARDWARE FOR SIZES 9 - 69 IS #2-56,  
HARDWARE FOR SIZE 100 IS #4-40)

SHELL FINISH  
A = CADMIUM  
B = NICKEL  
C = ANODIZE  
D = CHEM FILM  
E = BLACK CADMIUM  
G = GOLD  
P = PASSIVATION (STAINLESS STEEL)

EMI SPRINGS (PLUG ONLY)

WIRE LENGTH  
STRANDED (+ 1.00 / - 0.00)  
1 = 6 INCHES  
2 = 12 INCHES  
3 = 18 INCHES  
4 = 24 INCHES  
5 = 36 INCHES  
6 = 72 INCHES  
SOLID COPPER (+0.20 / - 0.00)  
1 = 0.5 INCH  
2 = 1.0 INCH  
3 = 0.25 INCH

WIRE SIZE  
STRANDED WIRE  
0 = 26 AWG  
1 = 24 AWG  
2 = 28 AWG  
SOLID WIRE  
0 = 25 AWG  
1 = 24 AWG

WIRE COLOR/TYPE  
0 = WHITE STRANDED \*  
1 = YELLOW STRANDED  
2 = 10 SOLID COLORS REPEATED \*  
3 = FULL COLOR CODE STRANDED  
9 = SOLID COPPER \*

TERMINATION  
0000 = SOLDER CUP, 26 AWG, ID (.023) TYP \*  
1111 = SOLDER CUP, 24 AWG, ID (.027) TYP \*  
WIRE TYPE  
STRANDED  
H = HARNESS (MIL-W-16878/4)  
S = SPACE (MIL-W-22759/33)  
M = MILITARY (MIL-W-22759/11) \*  
SOLID  
G = GOLD PLATED COPPER  
T = TIN/LEAD PLATED COPPER

\* = MOST COMMONLY USED & STOCKED WIRE TYPES AND HARDWARE OPTIONS

MATERIALS AND FINISHES ARE IAW MIL-DTL-83513 WHERE APPLICABLE  
FOR DETAILS SEE MIL SPEC OR WWW.CRISTEK.COM

1. MATERIALS:

SHELL - ALUMINUM ALLOY OR STAINLESS STEEL  
INSULATOR - GLASS FILLED THERMOPLASTIC  
PIN/SOCKET CONTACT - COPPER ALLOY  
INTERFACIAL SEAL - FLUOROSILICONE BLEND  
GROUND SPRINGS - BERYLLIUM COPPER

2. FINISH:

SHELL - SEE OPTIONS ABOVE  
PIN/SOCKET CONTACT - GOLD OVER NICKEL  
GROUND SPRINGS - GOLD OVER NICKEL

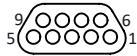
3. SPECIFICATIONS:

CURRENT RATING ----- 3 AMPS MAX  
TEMPERATURE RATING ----- -55° C TO +125° C  
INSULATION RESISTANCE ----- 5000 MEGOHMS MIN  
DWV AT SEA LEVEL ----- 600 VAC  
DWV AT 70,000 FT ALTITUDE --- 150 VAC  
CONTACT RESISTANCE:  
26 AWG (STRANDED) = 28 MILLIOHMS MAX.  
24 & 25 AWG (SOLID) = 25 MILLIOHMS MAX.  
CONTACT RETENTION ----- 5 lb MINIMUM AXIAL LOAD  
ENGAGEMENT FORCE ----- 6 oz MAX  
SEPARATION FORCE ----- 0.5 oz MIN

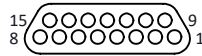
4. ADDITIONAL INFORMATION:

DESIGN AND PERFORMANCE IN GENERAL  
ACCORDANCE WITH M83513 WHERE APPLICABLE.  
FOR OTHER TERMINATIONS, CONTACT CRISTEK.

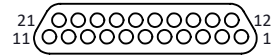
TOLERANCE: .XXX ±.005 .XX ±.01 ANGLE ±1°	TITLE MICRO-D METAL SHELL	SHT 2 OF 4	DWG. NO. CMD	REV T
------------------------------------------------	------------------------------	------------	-----------------	----------



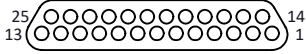
9



15



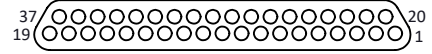
21



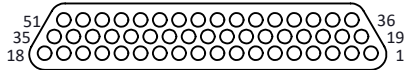
25



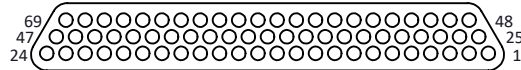
31



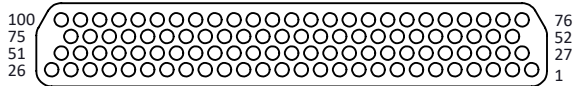
37



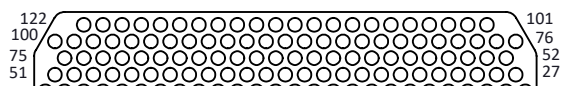
51



69

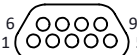


100

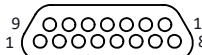


122

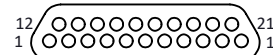
PLUG MATING FACE



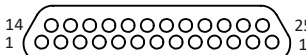
9



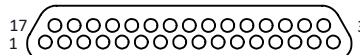
15



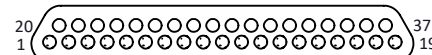
21



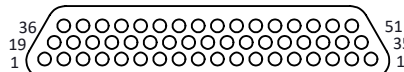
25



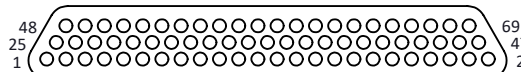
31



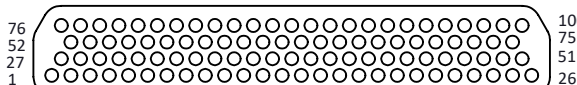
37



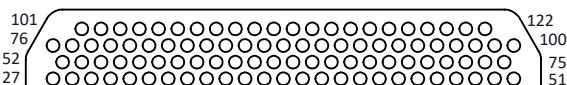
51



69



100



122

RECEPTACLE MATING FACE

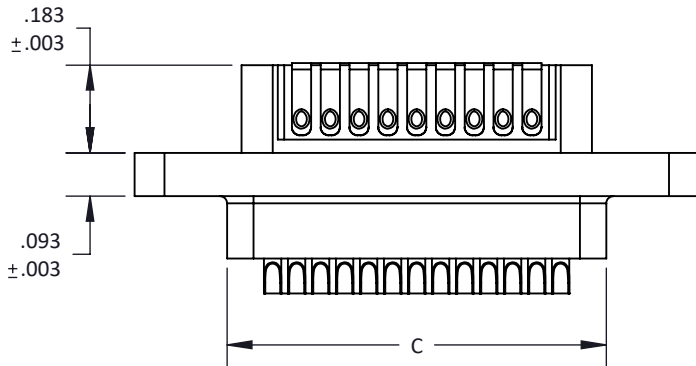
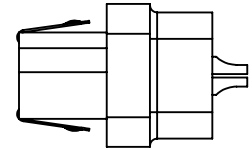
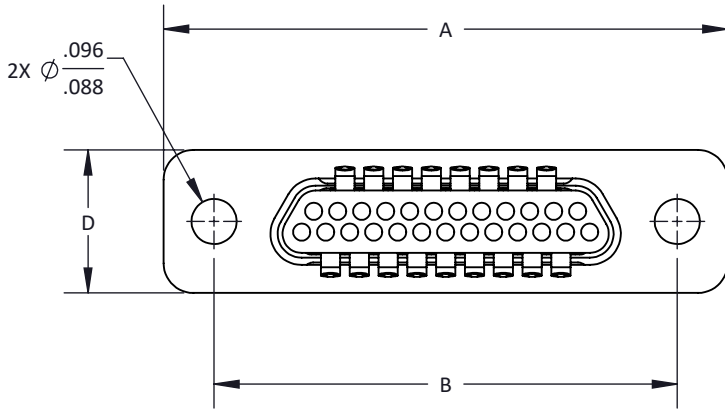
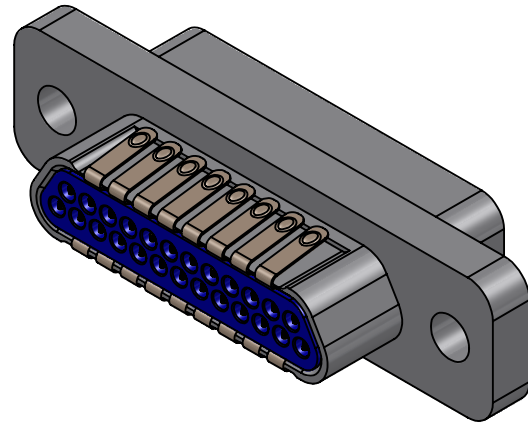
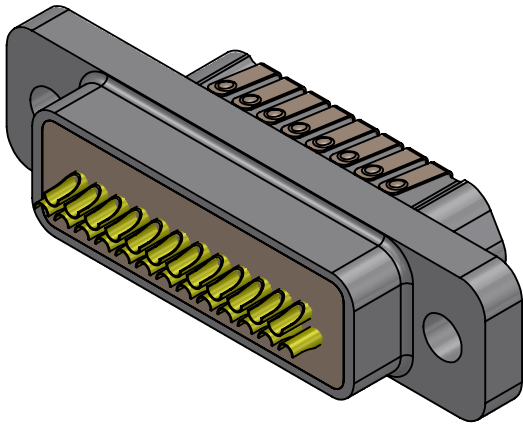
TOLERANCE: .XXX ±.005  
.XX ±.01  
ANGLE ±1°

TITLE  
MICRO-D METAL SHELL

SHT 3 OF 4

DWG. NO.  
CMD

REV  
T



NO. OF CONTACTS	A MAX	B BSC	C MAX	D MAX
9	.785	.565	.400	.308
15	.935	.715	.550	.308
21	1.085	.865	.700	.308
25	1.185	.965	.800	.308
31	1.335	1.115	.950	.308
37	1.485	1.265	1.100	.308
51	1.435	1.215	1.050	.351
69	1.737	1.515	1.350	.351
100	2.170	1.800	1.442	.394

EMI SPRINGS (PLUG ONLY)

TOLERANCE: .XXX ±.005  
.XX ±.01  
ANGLE ±1°

TITLE  
MICRO-D METAL SHELL

SHT 4 OF 4

DWG. NO.  
CMD

REV  
T