

DESCRIPTION:

PMI MODEL NUMBER DTA-100M40G-30-CD-1 IS A 5 BIT PROGRAMMABLE 30 dB PIN DIODE ATTENUATOR WITH STEP RESOLUTION OF 1 dB OVER THE FREQUENCY RANGE OF 100 MHz TO 40 GHz.

SPECIFICATIONS:

- FREQUENCY: 100 MHz TO 40 GHz
- MEAN ATTENUATION RANGE: 30dB
- INSERTION LOSS: 5.0 dB TYP (UP TO 20GHz)
8.0 dB TYP (UP TO 40GHz)
- VSWR: 2.5:1 TYP
- ACCURACY OF ATTENUATION: ±2.5 dB TYP
- MINIMUM ATTENUATION STEP: 1.0 dB
- POWER HANDLING CAPABILITY: +24 dBm CW MAX
- INPUT 1dB COMPRESSION: +20dBm TYP
- SWITCHING TIME
 - ON TIME: 1.0 usec MAX
 - OFF TIME: 0.5 usec MAX
- POWER SUPPLY: 15V @ 50mA MAX
- CONNECTORS: (2) 2.92mm(F) & 15 Pin Micro-D Female
Shipped with Micro-D mating connector
- WEIGHT: 3.0 oz (85 gm) Approximate
- FINISH: PAINTED GRAY
- LOGIC INPUT
 - LOGIC "0" (BIT OFF) 0 to +0.8V
 - LOGIC "1" (BIT ON) +2.0 to +5.0V

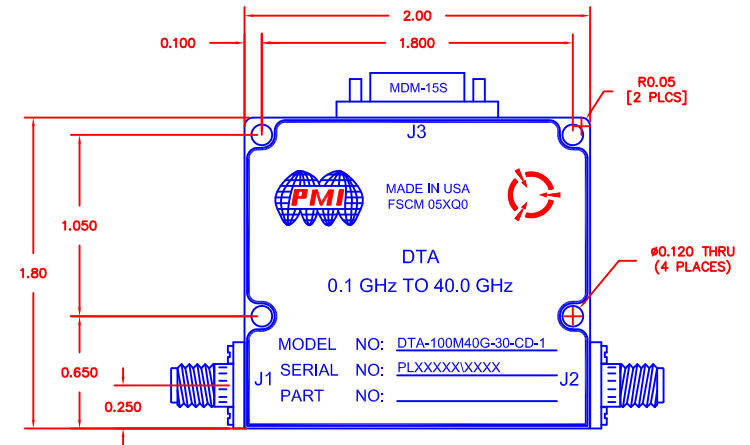
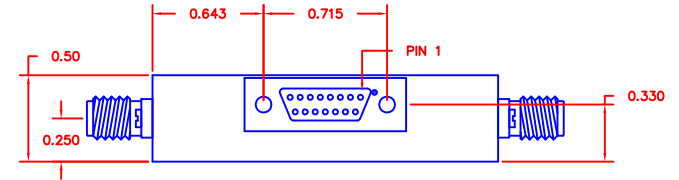
ENVIRONMENTAL RATINGS:

- TEMPERATURE: -50°C TO +85°C (OPERATING)
-65°C TO +125°C (STORAGE)
- HUMIDITY: MIL-STD-202F, METHOD 103B COND. B
- SHOCK: MIL-STD-202F, METHOD 213B COND. B
- VIBRATION: MIL-STD-202F, METHOD 204D COND. B
- ALTITUDE: MIL-STD-202F, METHOD 105C COND. B
- TEMPERATURE CYCLE: MIL-STD-202F, METHOD 107

NOTE: THE ABOVE SPECIFICATIONS ARE SUBJECT TO CHANGE OR REVISION

| PIN NO: | J3 PIN FUNCTIONS |
|---------|------------------|
| 1 | 1dB |
| 2 | N.C. |
| 3 | N.C. |
| 4 | N.C. |
| 5 | GND |
| 6 | N.C. |
| 7 | N.C. |
| 8 | GND |
| 9 | N.C. |
| 10 | N.C. |
| 11 | +15VDC |
| 12 | 16dB |
| 13 | 8dB |
| 14 | 4dB |
| 15 | 2dB |

| REVISIONS | | | | |
|-----------|------|-------------------------|----------|----------|
| ZONE | REV. | DESCRIPTION | DATE | APPROVED |
| | A1 | ORIGINAL RELEASE | 2/11/11 | |
| | B1 | J3 PIN FUNCTION UPDATED | 3/30/12 | |
| | B2 | ECN # 13-0206 | 11/22/13 | |



PMI CONFIDENTIAL AND PROPRIETARY

PLANAR MONOLITHICS INDUSTRIES, INC.

7311-F GROVE ROAD
 FREDERICK, MARYLAND 21704 USA
 TEL: 301-662-5019 FAX: 301-662-1731
 WEBSITE: www.pmi-rf.com
 E-MAIL: sales@pmi-rf.com
 ISO 9001 CERTIFIED



| | | | | |
|-------------------|--|---------|---------------------|----------------|
| APPROVALS | | DATE | TITLE | |
| DRAWN <i>K.M.</i> | | 2/11/11 | PRODUCT FEATURE | |
| CHECKED | | | DTA-100M40G-30-CD-1 | |
| ISSUED | | | SIZE A | FSCM NO. 05XQ0 |
| | | | DWG NO. 27015601-B | REV. B2 |
| SCALE N:S | | | SHEET 1 OF 1 | |

ALL DIMENSIONS ARE IN INCHES
 TOLERANCES:
 X.XX ±0.020
 X.XXX ±0.010