

DESCRIPTION:

PMI MODEL NUMBER DTA-30M7D2G-60-CD-1 IS A 8 BIT PROGRAMMABLE 60 DB PIN DIODE ATTENUATOR WITH STEP RESOLUTION AS LOW AS 0.25 DB OVER THE FREQUENCY RANGE OF 30 MHz TO 7.2 GHz.

SPECIFICATIONS:

- FREQUENCY: _____ 0.03 GHz TO 6.0 GHz
- MEAN ATTENUATION RANGE _____ 60dB
- INSERTION LOSS _____ 4.0dB MAX
- RETURN LOSS: _____ -8.5dB MAX.
- MAX POWER RATING: _____ +20dBm MIN

The maximum total input power that the device can handle without adversely impacting the operating characteristics of the device.

• ATTENUATION FLATNESS:

- @ 10 dB _____ ±1.0 dB
- @ 20dB _____ ±1.5 dB
- @ 40dB _____ ±3.0 dB
- @ 60dB _____ ±5.0 dB

• ACCURACY OF ATTENUATION

- 0 dB TO 30 dB _____ ±1.0 dB
- 30 dB TO 50 dB _____ ±1.3 dB
- 50 dB TO 60 dB _____ ±1.5 dB

- SWITCHING TIME _____ 50 usec MAX

- DIGITAL CONTROL _____ 8 BIT Binary TTL

- INPUT TRACKING: _____ ATTENUATION MUST TRACK INPUT VALUES MONOTONICALLY. WHEN CHANGING FROM ONE SETTING TO ANOTHER, THE ATTENUATION MUST REMAIN BETWEEN THE STARTING ATTENUATION AND THE FINAL ATTENUATION.

- POWER SUPPLY _____ +12VDC @ 155mA MAX (10.8VDC minimum and 13.2VDC maximum)

- PWR/CTL CONNECTORS _____ 15 PIN Micro-D-Female (MATING CONNECTOR SUPPLIED)

- RF CONNECTORS _____ SMA - Female

- FINISH _____ PAINTED BLUE

PIN NO:	J3 PIN FUNCTIONS
1	2dB
2	1dB
3	0.5dB
4	0.25dB (LSB)
5	GND
6	Not Used
7	Not Used
8	GND
9	Not Used
10	Not Used
11	+12VDC
12	32dB (MSB)
13	16dB
14	8dB
15	4dB

ENVIRONMENTAL RATINGS:

- TEMPERATURE: _____ -40°C TO +85°C (OPERATING)
-65°C TO +125°C (STORAGE)
- HUMIDITY: _____ MIL-STD-202F, METHOD 103B COND. B
- SHOCK: _____ MIL-STD-202F, METHOD 213B COND. B
- VIBRATION: _____ MIL-STD-202F, METHOD 204D COND. B
- ALTITUDE: _____ MIL-STD-202F, METHOD 105C COND. B
- FUNGUS: _____ MIL-STD-810C, METHOD 508.2
- TEMPERATURE CYCLE: _____ MIL-STD-202F, METHOD 107

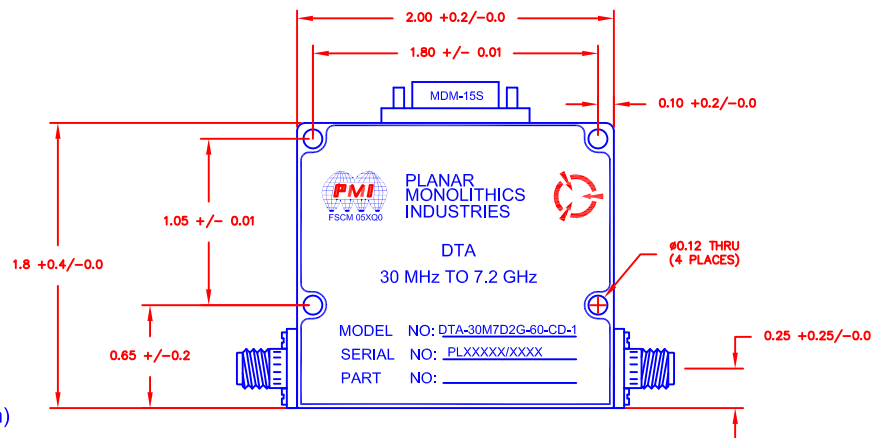
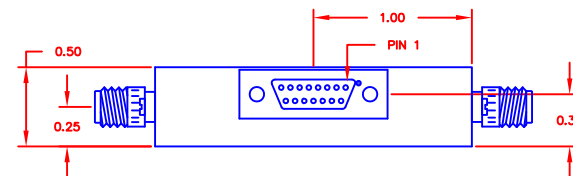
• LOGIC INPUT

LOGIC "0" (BIT OFF) -0.3 to +0.8V
 LOGIC "1" (BIT ON) +2.0 to +5.0V

ALL DIMENSIONS ARE IN INCHES
 TOLERANCES:
 X.XX ±0.020
 X.XXX ±0.010

REVISIONS				
ZONE	REV.	DESCRIPTION	DATE	APPROVED
	—	PRELIMINARY	1/26/23	

MECHANICAL OUTLINE



PMI CONFIDENTIAL AND PROPRIETARY

PLANAR MONOLITHICS INDUSTRIES, INC.

7309-A GROVE ROAD
 FREDERICK, MARYLAND 21704 USA
 TEL: 301-662-5019 FAX: 301-662-1731
 WEBSITE: www.pmi-rf.com
 E-MAIL: sales@pmi-rf.com
 ISO 9001 CERTIFIED



APPROVALS		DATE	TITLE			
DRAWN <i>JPH</i>		1/26/23	PRODUCT FEATURE			
CHECKED			DTA-30M7D2G-60-CD-1			
ISSUED			SIZE A	FSCM NO. 05XQ0	DWG NO. PRELIMINARY	REV. —
			SCALE N:S	SHEET 1 OF 1		

NOTE: THE ABOVE SPECIFICATIONS ARE SUBJECT TO CHANGE OR REVISION