

## Description:

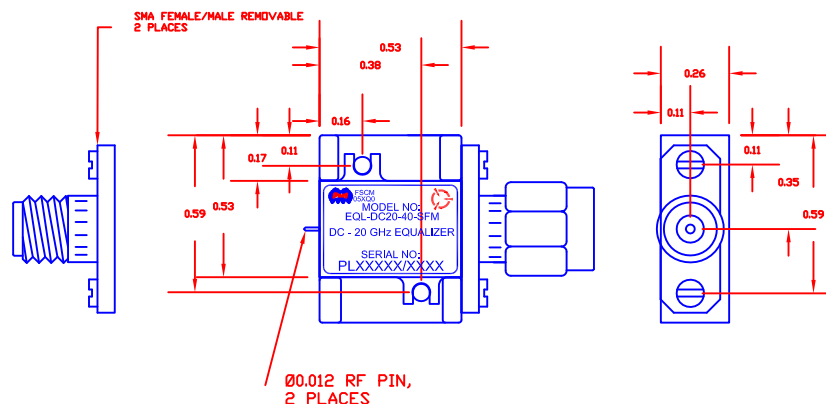
EQL-DC20-40-SFM IS A DC TO 20 GHz PASSIVE EQUALIZER WITH A 40 dB TYP. LOSS AT DC WITH A INSERTION LOSS OF 1 dB TYP. AT 20 GHz. THE EQUALIZER DESIGN ALLOWS BOTH FORWARD AND REVERSE MEASUREMENT TO BE EQUIVALENT.

REVISIONS			
ZONE	REV.	DESCRIPTION	DATE
	—	PRELIMINARY	8/21/23

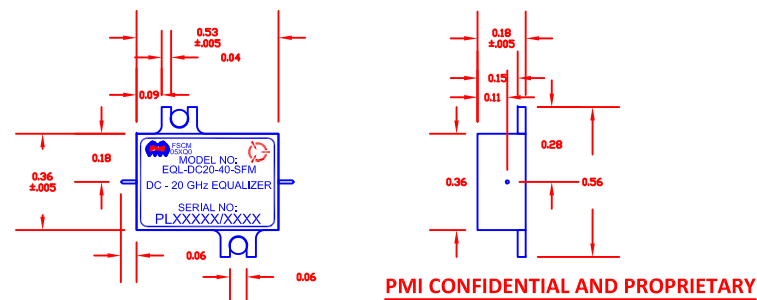
## SPECIFICATIONS

- FREQUENCY RANGE: ----- DC TO 20 GHz
- INSERTION LOSS: ----- 40.0 dB @ DC TYP.  
2.0 dB @ 20 GHz TYP.
- VSWR: ----- 1.8:1 TYP.  
2.0:1 MAX.
- NOMINAL SLOPE:----- 40 dB/20 GHz NOM.
- WEIGHT: ----- 1.0 OZ MAX.
- CONNECTORS: ----- SMA FEMALE/MALE REMOVABLE
- FINISH: ----- GOLD PLATED

## HOUSING WITH CARRIER



## HOUSING WITHOUT CARRIER (SURFACE MOUNT)



PMI CONFIDENTIAL AND PROPRIETARY

## ENVIRONMENTAL RATINGS

- TEMPERATURE: ----- -55 °C TO +85 °C (OPERATING)  
-65 °C TO +125 °C (STORAGE)
- HUMIDITY: ----- MIL-STD-202, METHOD 103B COND. B
- SHOCK:----- MIL-STD-202, METHOD 213B COND. B
- VIBRATION: ----- MIL-STD-202, METHOD 204D COND. B
- ALTITUDE: ----- MIL-STD-202, METHOD 105C COND. B
- TEMPERATURE CYCLE: ----- MIL-STD-202, METHOD 107D COND. A

NOTE: SPECIFICATIONS WILL VARY OVER OPERATING TEMPERATURE

NOTE: THE ABOVE SPECIFICATIONS ARE SUBJECT TO CHANGE OR REVISION

ALL DIMENSIONS ARE IN INCHES  
TOLERANCES:  
X.XX ±0.020  
X.XXX ±0.010

## PLANAR MONOLITHICS INDUSTRIES, INC.

7311-F GROVE ROAD  
FREDERICK, MARYLAND 21704 USA  
TEL: 301-662-5019 FAX: 301-662-1731  
WEBSITE: [www.pmi-rf.com](http://www.pmi-rf.com)  
E-MAIL: [sales@pmi-rf.com](mailto:sales@pmi-rf.com)  
ISO 9001 CERTIFIED



APPROVALS		DATE		TITLE			
DRAWN		8/21/23		PRODUCT FEATURE			
CHECKED				EQL-DC20-40-SFM			
ISSUED				SIZE	FSCM NO.	DWG NO.	REV.
				A	05XQ0	PRELIMINARY	—
				SCALE	N:S	SHEET	1 OF 1