



**PLANAR
MONOLITHICS
INDUSTRIES, INC.**

**8 GHz TO 11 GHz
RF SIGNAL PROCESSING
ASSEMBLY
PMI MODEL No:
RFOC-811-QRC**

KEY FEATURES:

- 8 TO 11 GHz Frequency Range
- 8 Internal Voltage-controlled 60dB PIN Diode Attenuators
- 8 Internal Fast Switching PIN Diode Switches
- 29 Internal Components integrated
- 3 Independent Sub-systems
- Size: 8.50”L x 3.90”W x 1.85”H

SPECIFICATIONS:



Frequency Range	8-11 GHz
Input Powers	At J1005: +10 to +20dBm At J1013: -50 to +20dBm At J1006: +10 to +15dBm At J1016: +8 to +13dBm At J1012: -50 to +20dBm At J1011: +8 to +13dBm At J1008: -60 to -10dBm
Output Powers	At J1007: 11.65dBm At J1014: -54 to 6.9dBm At J1015: -55 to 9.5dBm At J1017: -90 to +15dBm At J1009: -110 to -0.35dBm At J1010: -45 to +4.65dBm
I&O VSWR	2.0:1 All Input Ports 2.5: 1 All Output Ports
Throughput Delay	10ns MAX For all the paths of interest
Depth of Modulation	K1: 60dB MIN AT1 to AT6, AT8: 50dB MIN AT7: 40dB MIN SW1 to SW6, SW8: 60dB MIN SW7: 50dB MIN
Switch On/Off	50ns MAX

PLANAR MONOLITHICS INDUSTRIES, INC., 7311-G Grove Road, Frederick, MD 21704
 Tel: 301-662-4700 • Fax: 301-662-4938 • Email: sales@planarmonolithics.com
 Website: <http://www.planarmonolithics.com>



**PLANAR
MONOLITHICS
INDUSTRIES, INC.**

**8 GHz TO 11 GHz
RF SIGNAL PROCESSING
ASSEMBLY
PMI MODEL No:
RFOC-811-QRC**

SPECIFICATIONS (CONT):

	J1005 to J1014: 3dB MIN (AT8: "MIN", SW8: "ON")
	J1005 to J1007: 6dB MIN, 20dB MAX (SW2: "ON")
	J1013 to J1014: 10dB MIN, 23dB MAX (AT2: "MIN", AT7 & AT8: "MAX", SW7 & SW8: "OFF")
	J1013 to J1014: 0dB MIN, 13dB MAX (AT2: "MAX", AT7 & AT8: "MIN", SW7 & SW8: "ON")
	J1013 to J1007: 3dB MIN, 16dB MAX (AT7: "MIN", SW7: "ON")
Gain/Loss	J1006 to J1015: -10dB MIN (AT1: "MIN", SW1 & K1: "ON")
	J1006 to J1017: 3dB MIN, 20dB MAX (AT1: "MIN", SW1: "ON", K1: "OFF")
	J1016 to J1017: 3dB MIN, 20dB MAX (AT6: "MIN", SW6: "ON")
	J1012 to J1017: 3dB MIN, 20dB MAX (AT3: "MIN", SW3: "ON")
	J1011 to J1017: 3dB MIN, 20dB MAX (AT5: "MIN", SW5: "ON")
	J1008 to J1009: 6dB MIN, 16dB MAX (AT4: "MIN", SW4: "ON")
	J1008 to J1010: 9dB MIN, 19dB MAX
Attenuator Rise/Fall Time	1.6µs/100ns MAX
Power Supplies	5.0A MAX at +5V 3.0A MAX at +15V 3.0A MAX at -15V 1.0A MAX at +28V
Size	8.5"L x 3.9"W x 1.85"H

ENVIRONMENTAL RATINGS:

Temperature:	-55°C to +85°C Operating -65°C to +125°C Non-Operating
Humidity:	MIL-STD-202F, Method 103B Cond. B
Shock:	MIL-STD-202F, Method 213B Cond. B
Vibration:	MIL-STD-202F, Method 204D Cond. B
Altitude:	MIL-STD-202F, Method 105C Cond. B
Temperature Cycle:	MIL-STD-202F, Method 107D Cond. A

PLANAR MONOLITHICS INDUSTRIES, INC., 7311-G Grove Road, Frederick, MD 21704
Tel: 301-662-4700 • Fax: 301-662-4938 • Email: sales@planarmonolithics.com
Website: <http://www.planarmonolithics.com>

ISO9001 : 2000 CERTIFIED

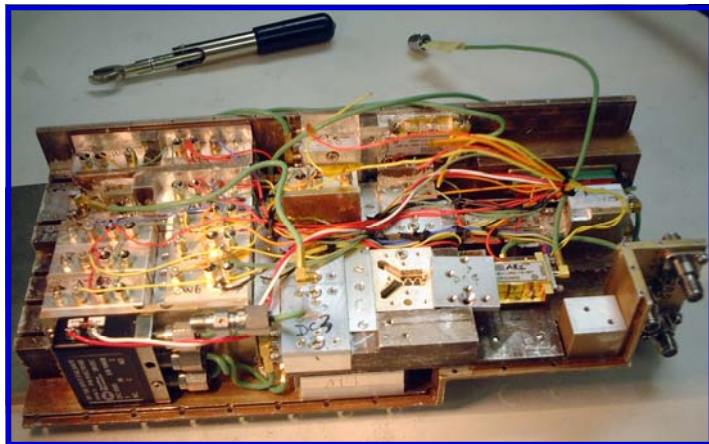
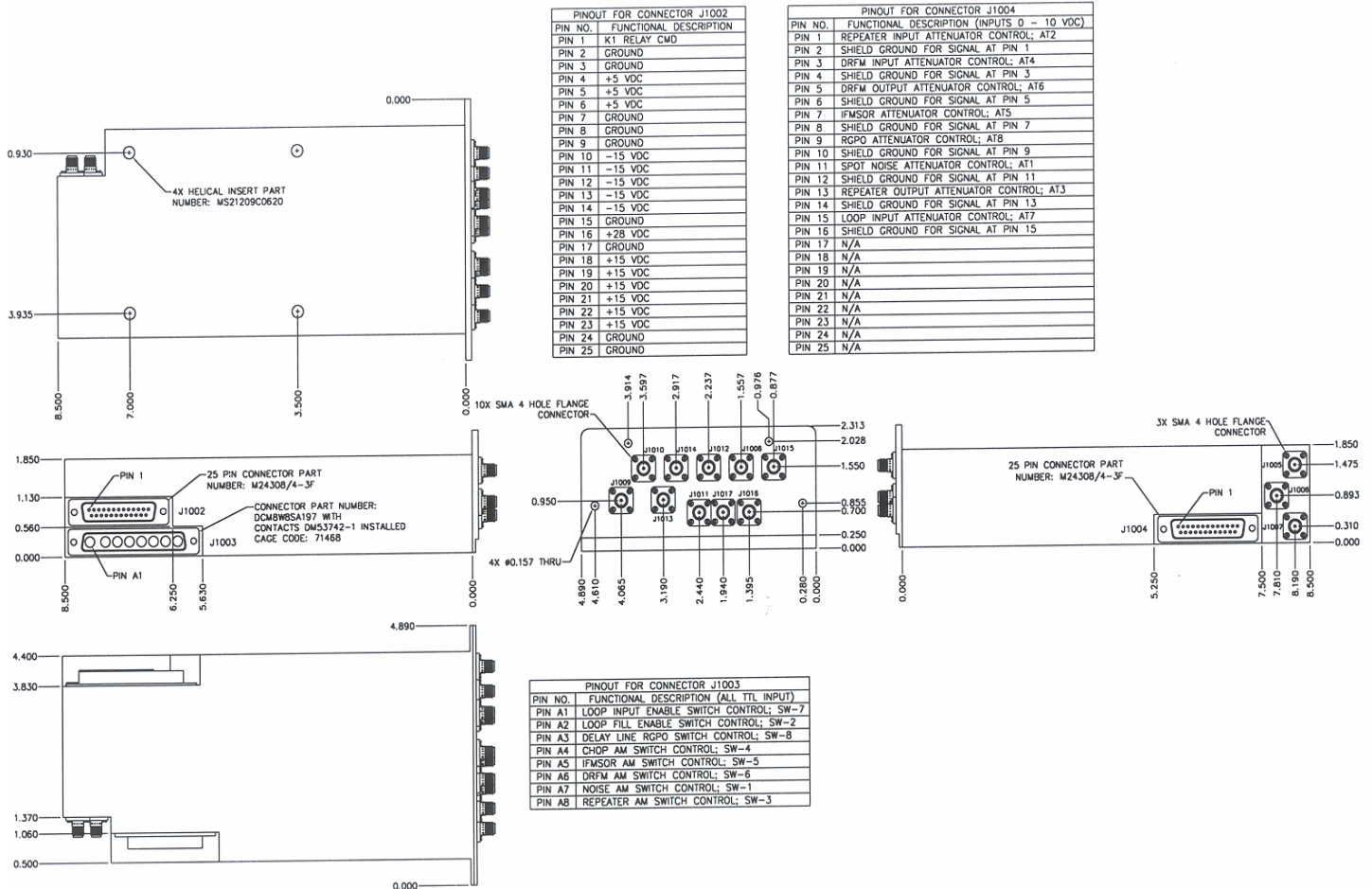


**PLANAR
MONOLITHICS
INDUSTRIES, INC.**

8 GHz TO 11 GHz RF SIGNAL PROCESSING ASSEMBLY

**PMI MODEL No:
RFOC-811-QRC**

OUTLINE DRAWING:



PLANAR MONOLITHICS INDUSTRIES, INC., 7311-G Grove Road, Frederick, MD 21704
 Tel: 301-662-4700 • Fax: 301-662-4938 • Email: sales@planarmonolithics.com
 Website: <http://www.planarmonolithics.com>

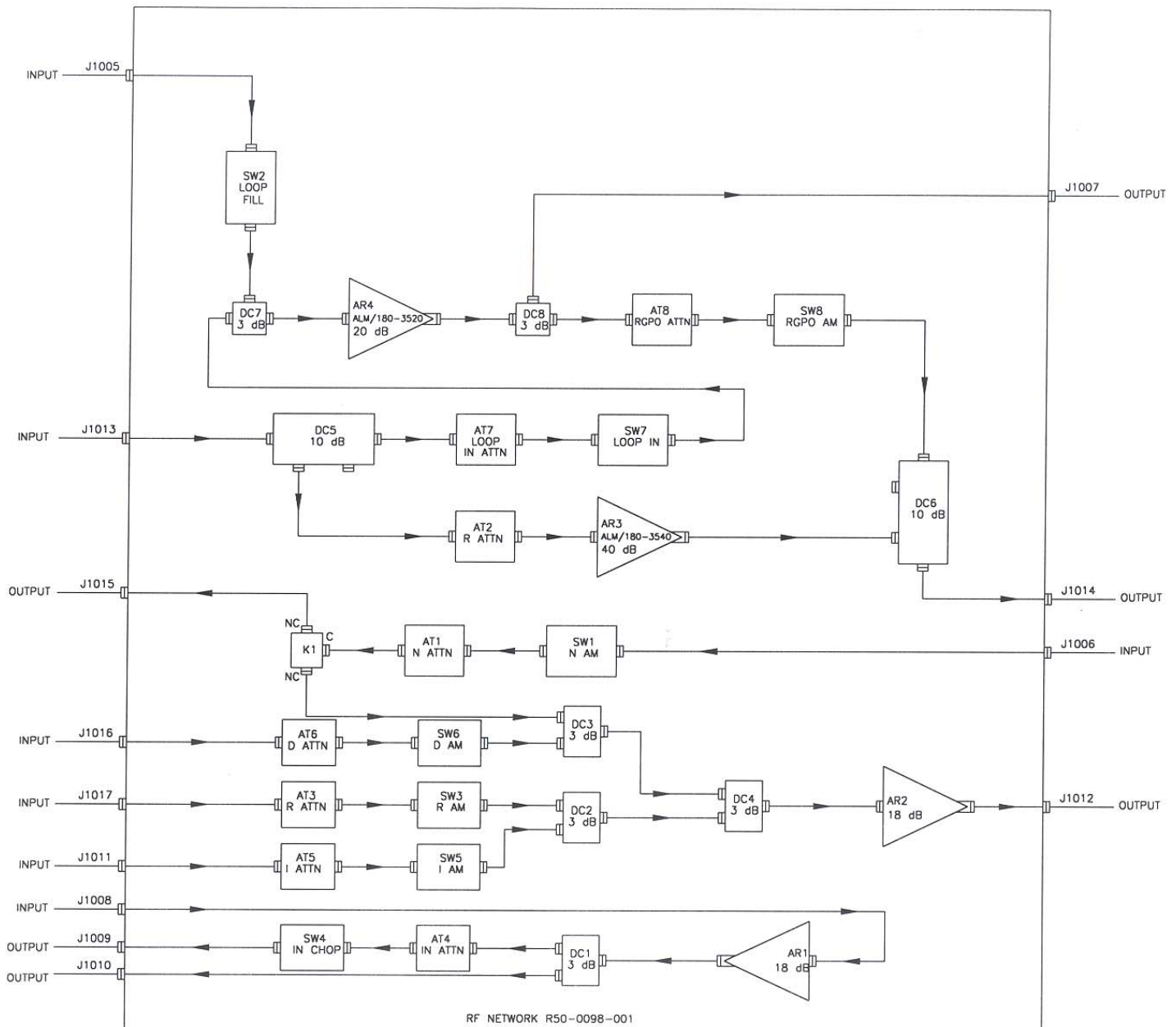
ISO9001 : 2000 CERTIFIED



**PLANAR
MONOLITHICS
INDUSTRIES, INC.**

8 GHz TO 11 GHz RF SIGNAL PROCESSING ASSEMBLY PMI MODEL No: RFOC-811-QRC

FUNCTIONAL SCHEMATIC:



PLANAR MONOLITHICS INDUSTRIES, INC., 7311-G Grove Road, Frederick, MD 21704
Tel: 301-662-4700 • Fax: 301-662-4938 • Email: sales@planarmonolithics.com
Website: <http://www.planarmonolithics.com>

ISO9001 : 2000 CERTIFIED