

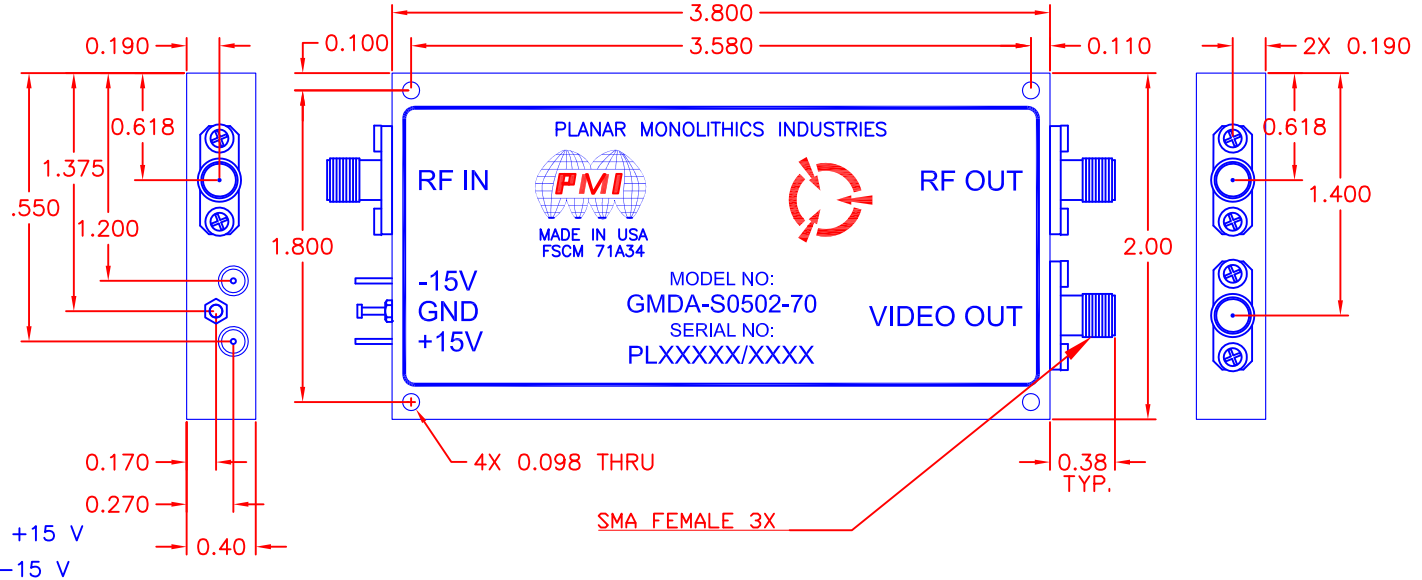
DESCRIPTION

PMI MODEL GMDA-S0502-70 IS A (0.5 TO 2.0) GHz HIGH SPEED SDLVA WITH A LOGGING RANGE OF -70 TO +0 dBm, A TSS OF -75 dBm AND A LIMITED RF OUTPUT OF +12 dBm ±2 dB.

REVISIONS				
ZONE	REV.	DESCRIPTION	DATE	APPROVED
	-	PRELIMINARY	4-7-15	JM

SPECIFICATIONS

- FREQUENCY RANGE: (0.5 TO 2.0) GHz
- LOGGING RANGE: -70 TO 0 dBm
- LOGGING ACCURACY*: ±2.5 dB
- RISE TIME: 10 ns
- RECOVERY TIME: 50 ns
- INPUT VSWR: 2.0:1
- TSS: -75 dBm
- LOG SLOPE: 25 mV/dB
- LIMITED OUTPUT: +12 dBm ±2.0 dB
- DC POWER: 700 mA @ +12 V TO +15 V
80 mA @ -12 V TO -15 V
- FINISH: ELECTROLESS NICKEL PLATE
0.0005 TO 0.0007 THK PER AMS2404



* LOGGING ACCURACY INCLUDES THE EFFECTS OF LOG LINEARITY, FREQUENCY FLATNESS, AND TEMPERATURE.

PMI CONFIDENTIAL AND PROPRIETARY

ENVIRONMENTAL RATINGS

- TEMPERATURE: -55°C TO +85 °C (OPERATING)
-65°C TO +125 °C (STORAGE)
- HUMIDITY: MIL-STD-202F, METHOD 103B COND. B
- SHOCK: MIL-STD-202F, METHOD 213B COND. B
- VIBRATION: MIL-STD-202F, METHOD 204D COND. B
- ALTITUDE: MIL-STD-202F, METHOD 105C COND. B
- TEMPERATURE CYCLE: MIL-STD-202F, METHOD 107D COND. A

NOTE: SPECIFICATIONS WILL VARY OVER OPERATING TEMPERATURE
NOTE: THE ABOVE SPECIFICATIONS ARE SUBJECT TO CHANGE OR REVISION

ALL DIMENSIONS ARE IN INCHES
TOLERANCES:
X.XX ±0.010
X.XXX ±0.005

PLANAR MONOLITHICS INDUSTRIES, INC.

4921 ROBERT J MATHEWS PKWY
EL DORADO HILLS, CALIFORNIA 95762 USA
TEL: 916-542-1401 FAX: 916-265-2597
WEBSITE: www.pmi-rf.com
E-MAIL: sales@pmi-rf.com
ISO 9001 CERTIFIED



APPROVALS		DATE	TITLE		
DRAWN	<i>JOHNM</i>	4-7-15	PRODUCT FEATURE GMDA-S0502-70 (0.5 TO 2.0) GHz SDLVA		
CHECKED	<i>JOHNM</i>	4-7-15	SIZE	FSCM NO.	DWG NO.
ISSUED			A	71A34	PRELIMINARY
			SCALE	N:S	SHEET 1 OF 1