

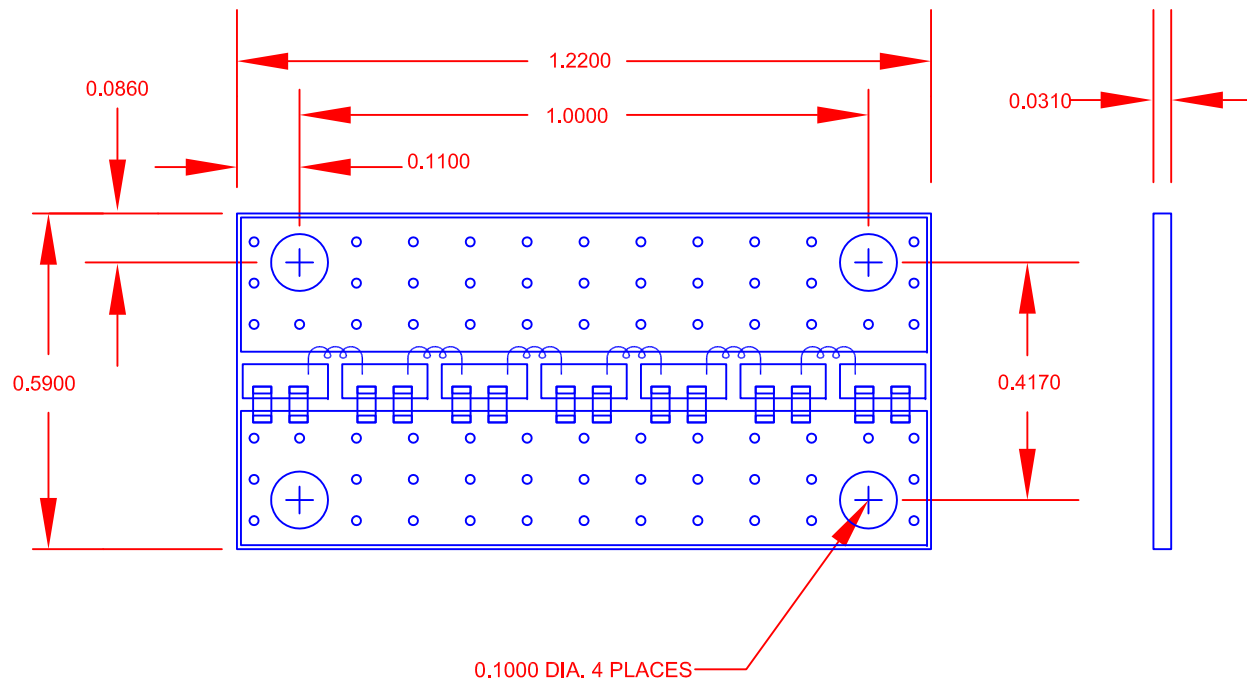
REVISIONS				
ZONE	REV.	DESCRIPTION	DATE	APPROVED
	A1	ORIGINAL RELEASE	8/26/11	
	A2	ECN # 13-0107	08/06/13	

**DESCRIPTION:**

PMI model number LP1000M-CD-MLL is a Lowpass filter.  
 This filter offers very high Q with broadband performance and very low loss, and is ideal for eliminating broadband harmonics.

**SPECIFICATIONS:**

- CUTOFF FREQUENCY: . . . . . 1000 MHz
- RETURN LOSS IN THE PASS BAND: . . . . . 12 dB Typ
- INSERTION LOSS (PASSBAND) . . . . . 1.7 dB Typ
- REJECTION AT 1080 MHz: . . . . . 23 dB TYP.
- REJECTION AT 1200 MHz: . . . . . 47 dB TYP.
- REJECTION AT 1650 MHz: . . . . . 80 dB TYP.
- REJECTION UP TO 1GHz . . . . . 60dB Min
- BACKSIDE COPPER
- SIZE . . . . . 1.220" (L) x 0.590" (W) x 0.031" (H)




**PMI CONFIDENTIAL AND PROPRIETARY**

**ENVIRONMENTAL RATINGS:**

- TEMPERATURE: . . . . . -40°C TO +70°C (OPERATING)  
 . . . . . -40°C TO +100°C (STORAGE)

ALL DIMENSIONS ARE IN INCHES  
 TOLERANCES:  
 X.XX ±0.020  
 X.XXX ±0.010  
 X.XXXX ±0.0050

NOTE: THE ABOVE SPECIFICATIONS ARE SUBJECT TO CHANGE OR REVISION

PART NO.		 <b>PLANAR MONOLITHICS INDUSTRIES</b> 7311-F GROVE ROAD FREDERICK, MARYLAND		
APPROVALS	DATE	TITLE		
DRAWN <b>NJA</b>	8/26/11	OUTLINE DRAWING LP1000M-CD-MLL		
CHECKED				
ISSUED		SIZE A	FSCM NO. 05XQ0	DWG NO. 27015501
				REV. A2
		SCALE N/A	SHEET 1 OF 1	