

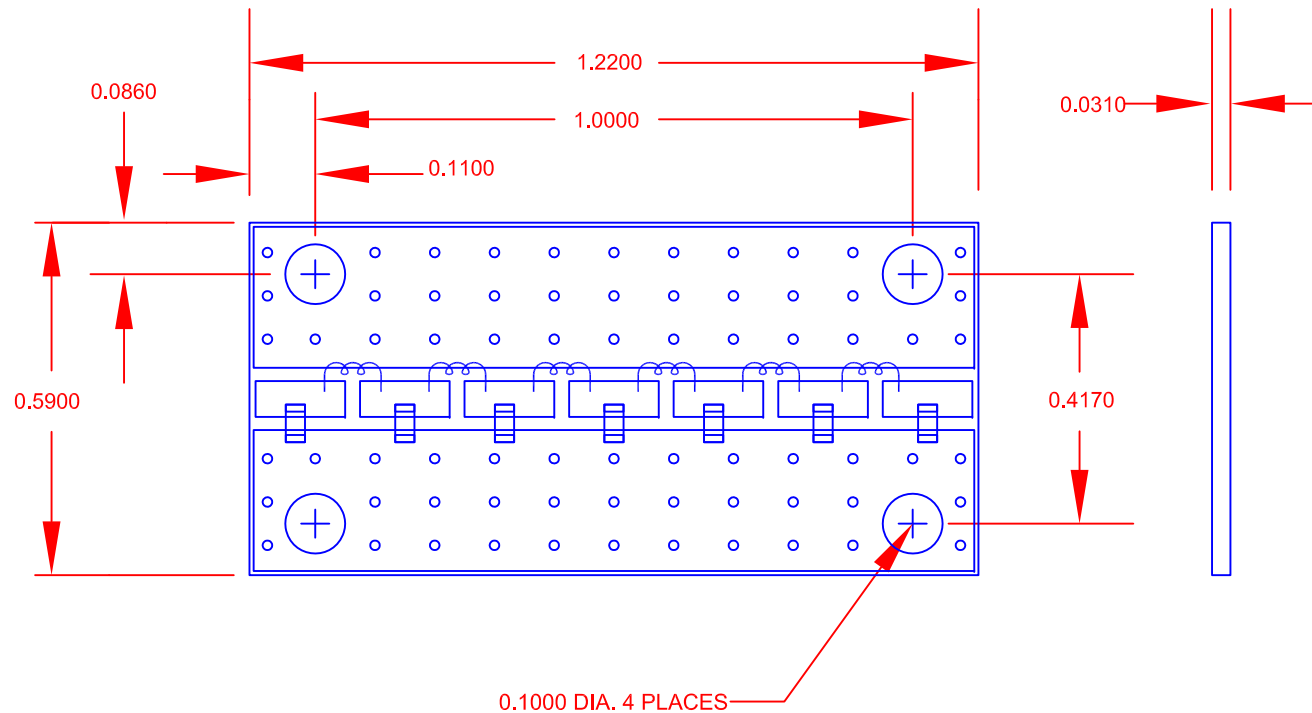
REVISIONS				
ZONE	REV.	DESCRIPTION	DATE	APPROVED
	A1	ORIGINAL RELEASE	8/26/11	
	A2	ECN # 13-0107	08/06/13	

DESCRIPTION:

PMI model number LP310M-CD-MLL is a Lowpass filter. This filter offers very high Q with broadband performance and very low loss, and is ideal for eliminating broadband harmonics.

SPECIFICATIONS:

- CUTOFF FREQUENCY: 310 MHz
- RETURN LOSS IN THE PASS BAND: 12 dB Typ
- INSERTION LOSS (PASSBAND) 1.05 dB Typ
- REJECTION AT 350 MHz: 32 dB TYP.
- REJECTION AT 400 MHz: 64 dB TYP.
- REJECTION AT 600 MHz: 90 dB TYP.
- REJECTION UP TO 1GHz 60dB Min
- BACKSIDE COPPER
- SIZE 1.220" (L) x 0.590" (W) x 0.031" (H)




PMI CONFIDENTIAL AND PROPRIETARY

ENVIRONMENTAL RATINGS:

- TEMPERATURE: -40°C TO +70°C (OPERATING)
 -40°C TO +100°C (STORAGE)

ALL DIMENSIONS ARE IN INCHES
 TOLERANCES:
 X.XX ±0.020
 X.XXX ±0.010
 X.XXXX ±0.0050

NOTE: THE ABOVE SPECIFICATIONS ARE SUBJECT TO CHANGE OR REVISION

PART NO.		 PLANAR MONOLITHICS INDUSTRIES 7311-F GROVE ROAD FREDERICK, MARYLAND		
APPROVALS	DATE	TITLE		
DRAWN NJA	8/26/11	OUTLINE DRAWING LP310M-CD-MLL		
CHECKED		SIZE	FSCM NO.	DWG NO.
ISSUED		A	05XQ0	27015541
		SCALE	N/A	SHEET 1 OF 1
				REV. A2